



**GOVERNMENT OF SIERRA LEONE
MINISTRY OF HEALTH AND SANITATION
DIRECTORATE OF HEALTH SECURITY AND EMERGENCIES**

WEEK 10

Disease specific report

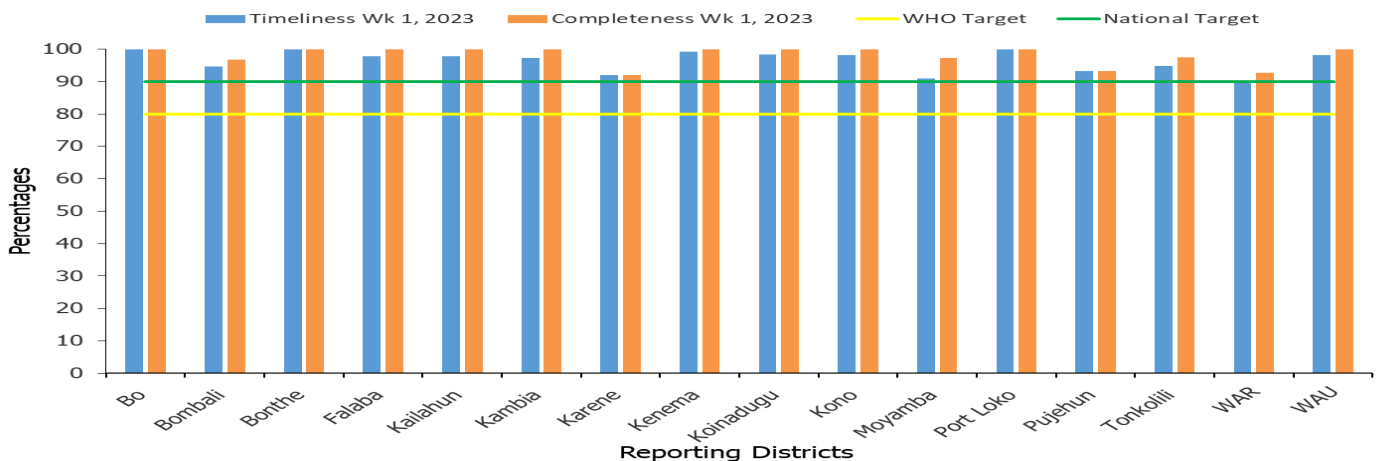
Week 10: 6th — 12th March , 2023

KEY HIGHLIGHTS FOR COVID-19 FOR THE WEEK

- **Acute Flaccid Paralysis (AFP):** Four (4) cases of AFP were reported this week all aged under five years from Kambia and Moyamba (2) each per district. The cases were investigated and samples sent to CPHRL for confirmatory shipment
- **Animal Bite (Dog):** Nineteen (19) Dog bite cases were reported this week all aged above five years. The highest number of cases were from Kono (6), Kailahun (4), WAU (3), Pujehun (2)
- **Animal Bite (Snake):** Fourteen (14) Snake bite cases were reported this week all aged above five years. The highest number of cases were from Falaba and Moyamba (3), Kailahun and Port Loko (2) each per districts
- **Maternal death:** Four (4) maternal death were reported from WAU (2), Kambia and Port Loko (1) each per district
- **Measles:** Eighty– five (85) cases of suspected Measles reported this week. Of the cases, seventy– eight were under fives and seven were above five years of age. The highest number of cases were from WAU (36), WAR (22), Port Loko (15), Karene (5). The cases were investigated and samples sent to CPHRL for confirmation
- **Yellow Fever :** Two (2) suspected cases of Yellow Fever were reported this week all aged above five years from Bonthe and Kailahun (1) each per district. The cases were investigated and samples sent to CPHRL for confirmation

- **COVID-19 :** No confirmed case was reported this week
- **COVID-19 Death:** No death related to COVID-19 was reported this week
- **COVID-19 Recovery:** No recovery was reported for this week

Health Facility Timeliness & Completeness of Weekly report by district, (Epi week 10, 2023)

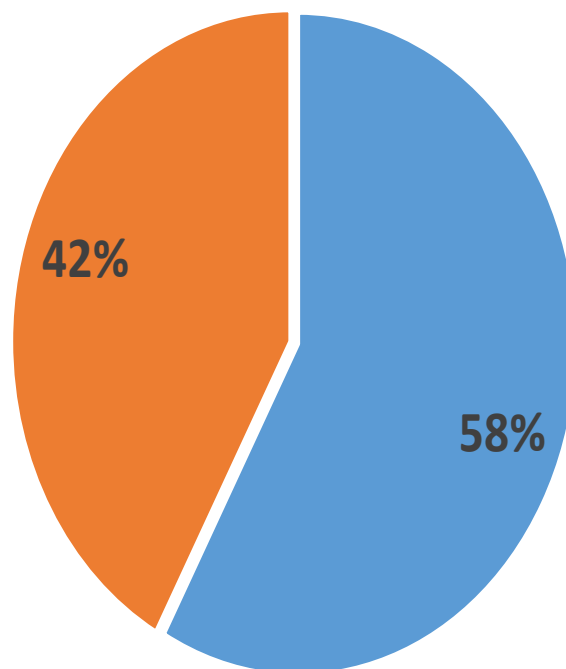


For week 10 of 2023, 15 out of 16 districts achieved both the WHO and national target for timeliness and completeness, while one met WHO target for completeness but didn't met national target for timeliness

Key highlights on COVID-19 Surveillance updates (Epi Week 10, 2023)

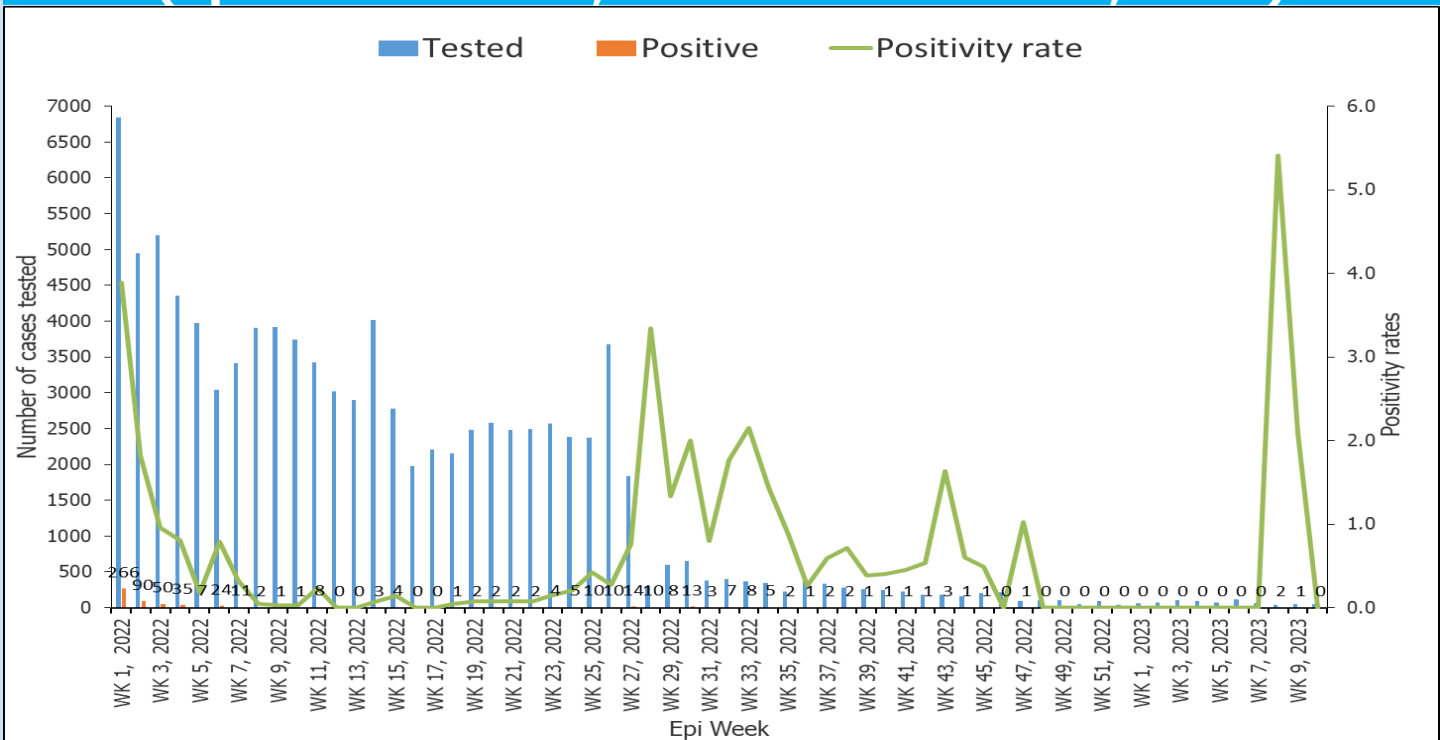
- A total of 53 reporting sites conducting COVID-19 RDT at facility level
- A total of 33 RDT and 14 departure testing were conducted with zero positive
- 0 Confirmed COVID-19 case reported: (Source: Both PCR & Ag-RDTs test result)
- 0 Death reported (Source: DHIS2 eCBDS)
- 0 recovered reported: (Source: DHIS2 eCBDS)

COVID-19 test conducted by sex (Epi Week 51 – 52, 2022 & Week 1 - 10, 2023) N=7730



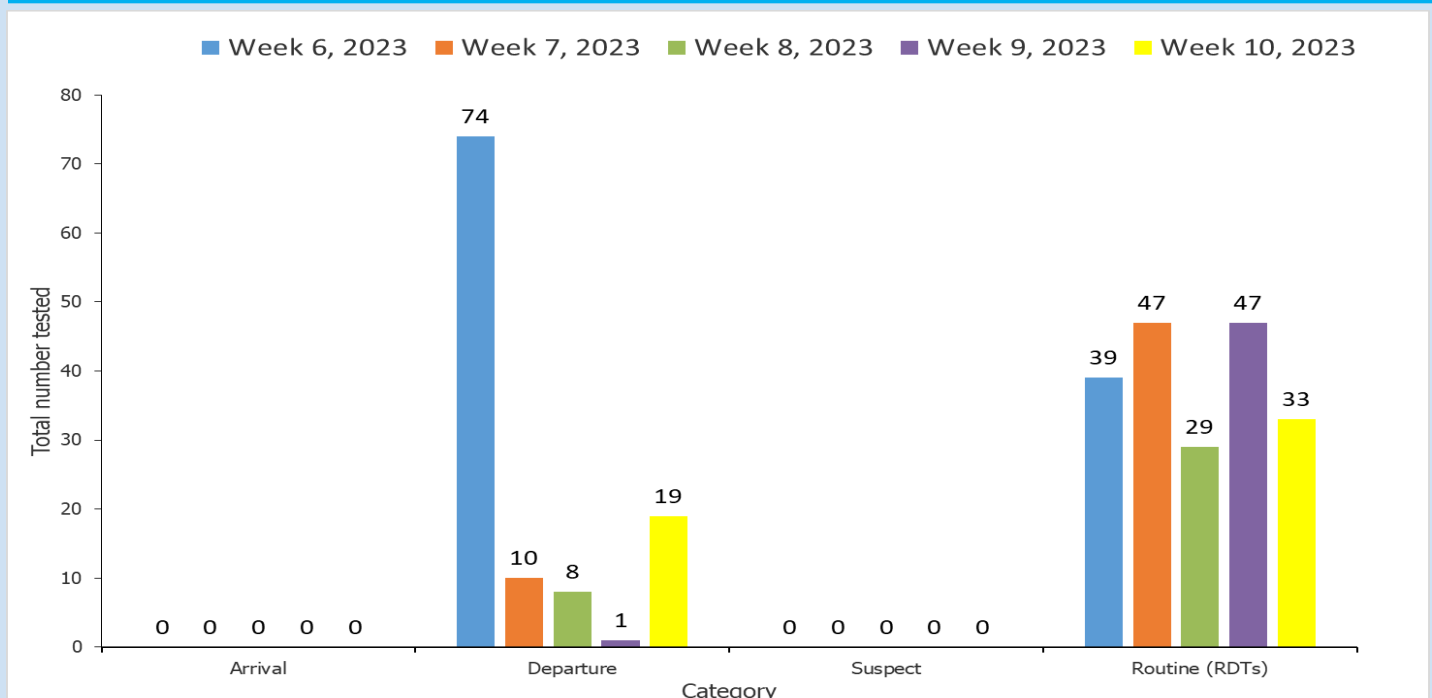
■ Male ■ Female

Positivity rate of COVID-19 confirmed cases (Epi Week 1 - 52, 2022 & Week 1 - 10, 2023)



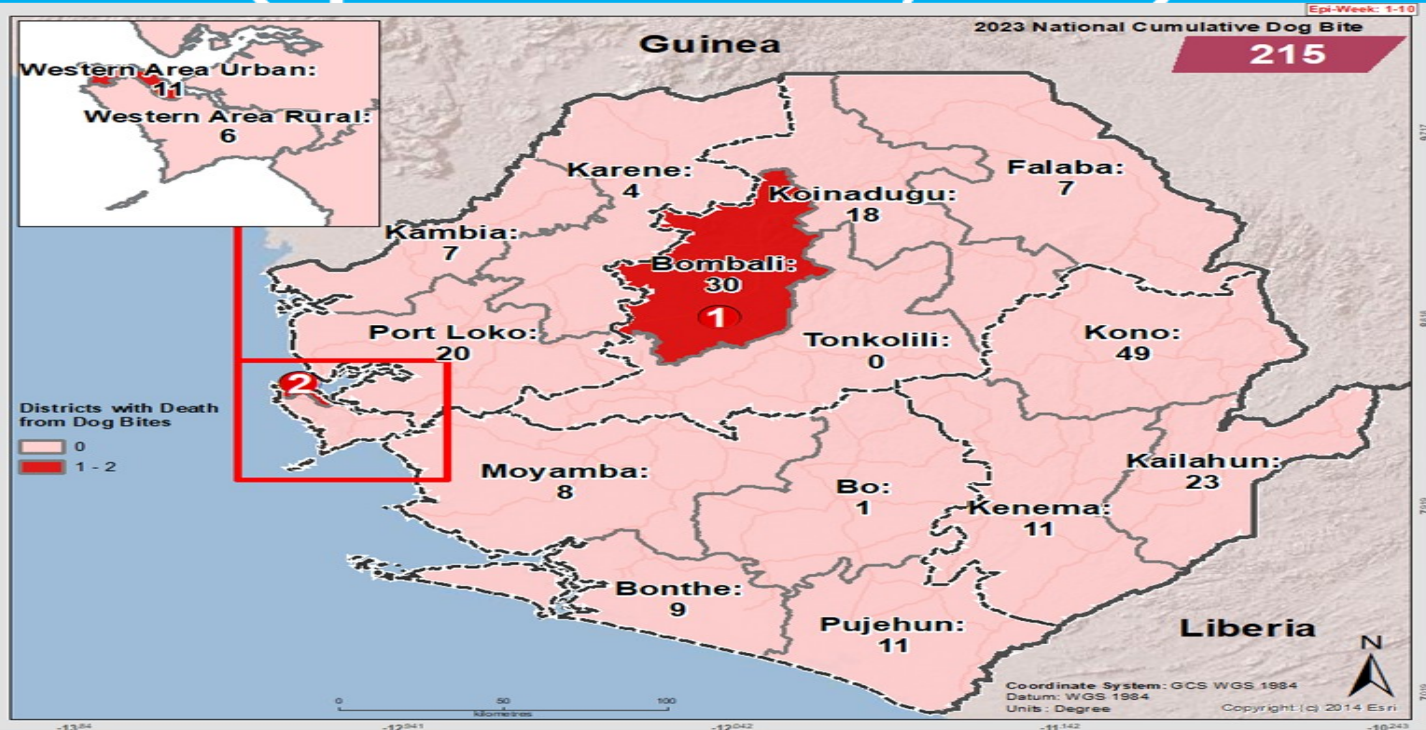
For week 10 of 2023 no confirmed COVID-19 case was reported countrywide.

Cumulative COVID-19 test conducted by Category (Epi Week 6 - 10, 2023) N=307



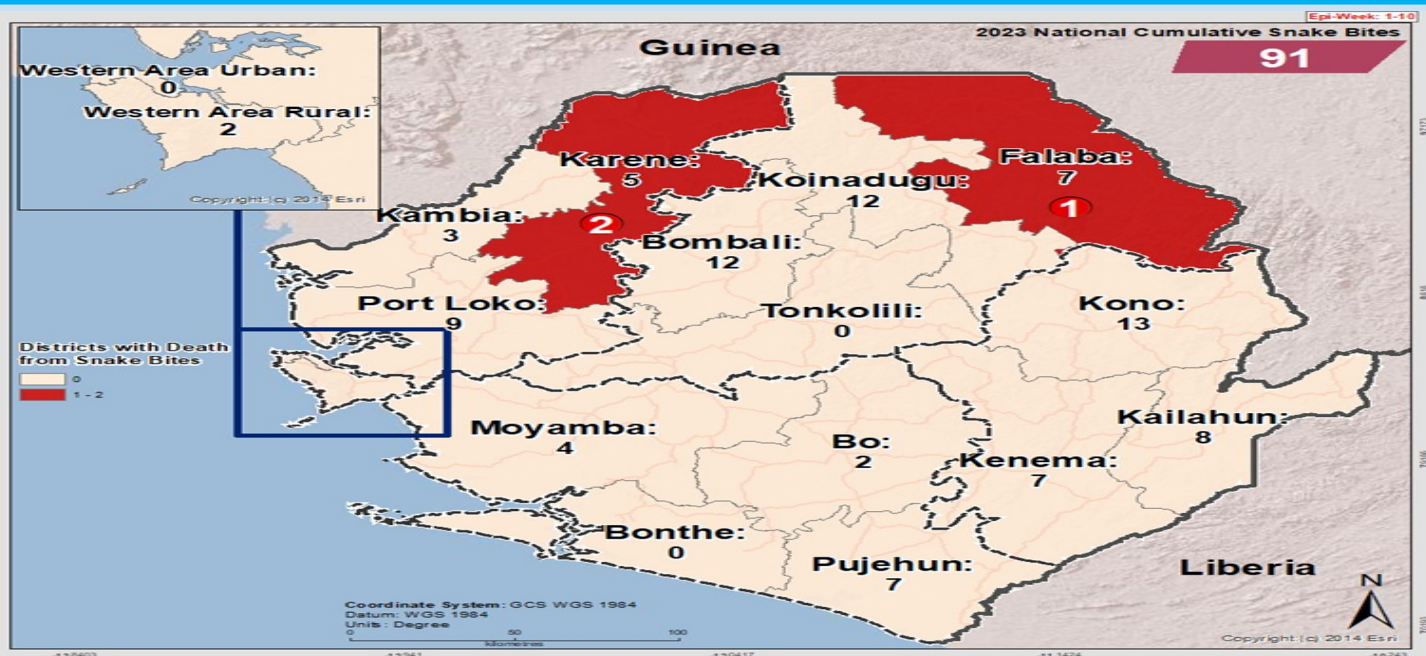
A greater proportion of testing is been done through routine facility RDT testing. The COVID-19 response has been transitioned to the Ministry of Health and Sanitation and facility testing is been promoted

Cumulative Dog Bite cases reported by district (Epi Week 1 - 10, 2023)



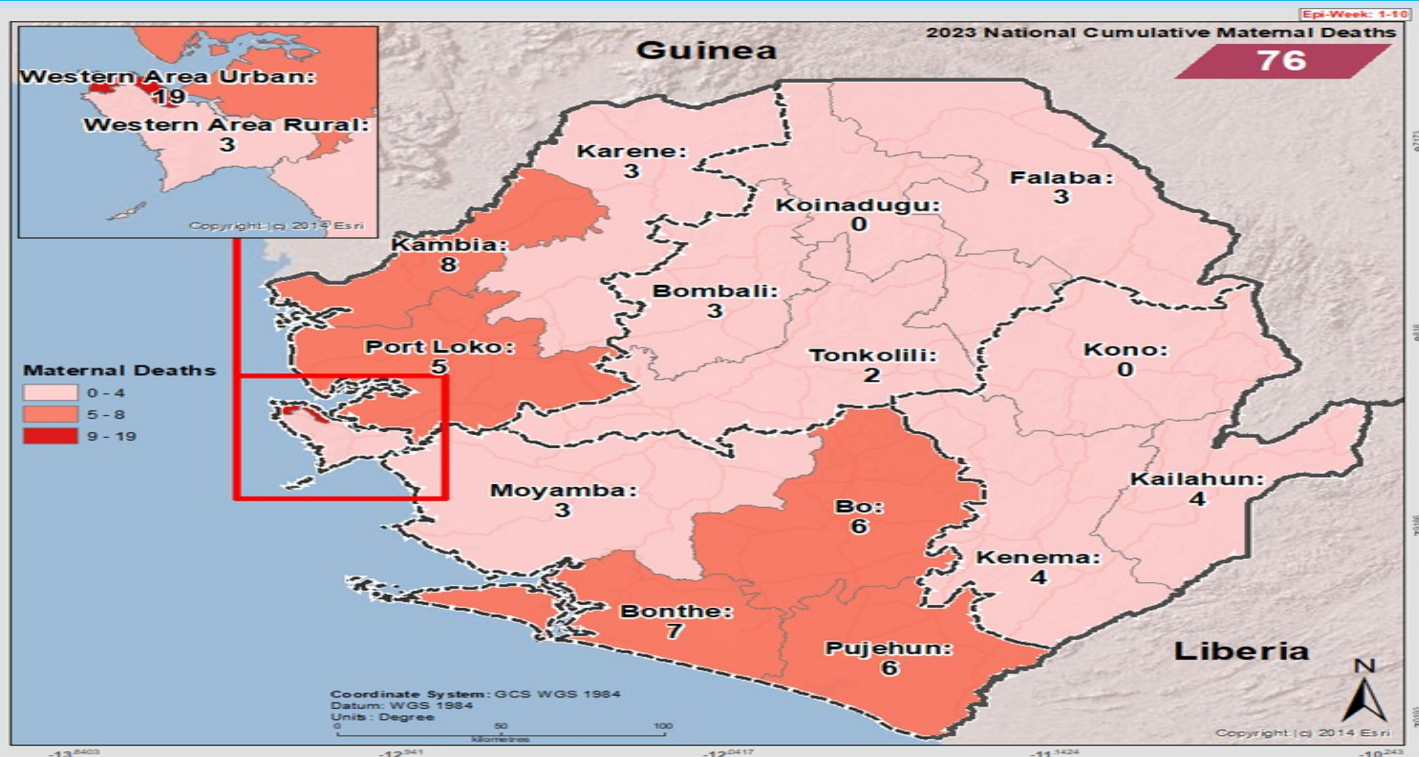
For week 10 of 2023, nineteen Dog bite cases were reported from eight districts. The cumulative number of cases countrywide is 215. The districts of Koinadugu, Kono, Bombali, Kailahun, Kenema, Pujehun, Moyamba, WAU, Bonthe and Port Loko, have reported higher numbers of Dog bite cases.

Cumulative Snake Bite cases reported by district (Epi Week 1 - 10, 2023)



For week 10 of 2023, a total of fourteen (14) snake bites reported from eight districts. The districts that have recorded higher numbers of snake bites are Kono, Bombali, Koinadugu, Port Loko, Kenema, Karene and Pujehun district. The cumulative total since the start of the year is 91 countrywide. Three deaths due to snake bites have so far been reported Karene (2) and Falaba (1) districts

Cumulative Maternal Death reported by district (Epi Week 1 - 10, 2023)



For week 10 of 2023, four maternal death were reported from three districts. The cumulative deaths since the start of the year is 76 countrywide.

Compared Maternal Death reported by district (Epi Week 1 - 10, 2022 & 2023)

District	2022 Week 1-10	2023 Week 1-10	Change
Bo	13	6	↓
Bombali	3	3	↔
Bonthe	3	7	↑
Falaba	3	3	↔
Kailahun	3	4	↑
Kambia	6	8	↑
Karene	1	3	↑
Kenema	11	4	↓
Koinadugu	4	0	↓
Kono	5	0	↓
Moyamba	6	3	↓
Port Loko	10	5	↓
Pujehun	4	6	↑
Tonkolili	8	2	↓
Western Rural	3	3	↔
Western Urban	15	19	↑
Total	98	76	↓

In comparison with week 10 of 2022, week 10 of 2023 has reported less death to that of 2022 and for the past seven week Koinadugu and Kono have reported zero maternal death

NATIONAL WEEKLY BULLETIN PRODUCTION TEAM



Editor: Charles Keimbe



Publisher: Mr. Harold Thomas



Co-Editor: Haja F Bangura



Data Analyst: Mr. Samba Kamara