

20 22



GOVERNMENT OF SIERRA LEONE
MINISTRY OF HEALTH AND SANITATION
DIRECTORATE OF HEALTH SECURITY AND EMERGENCIES

WEEK 52

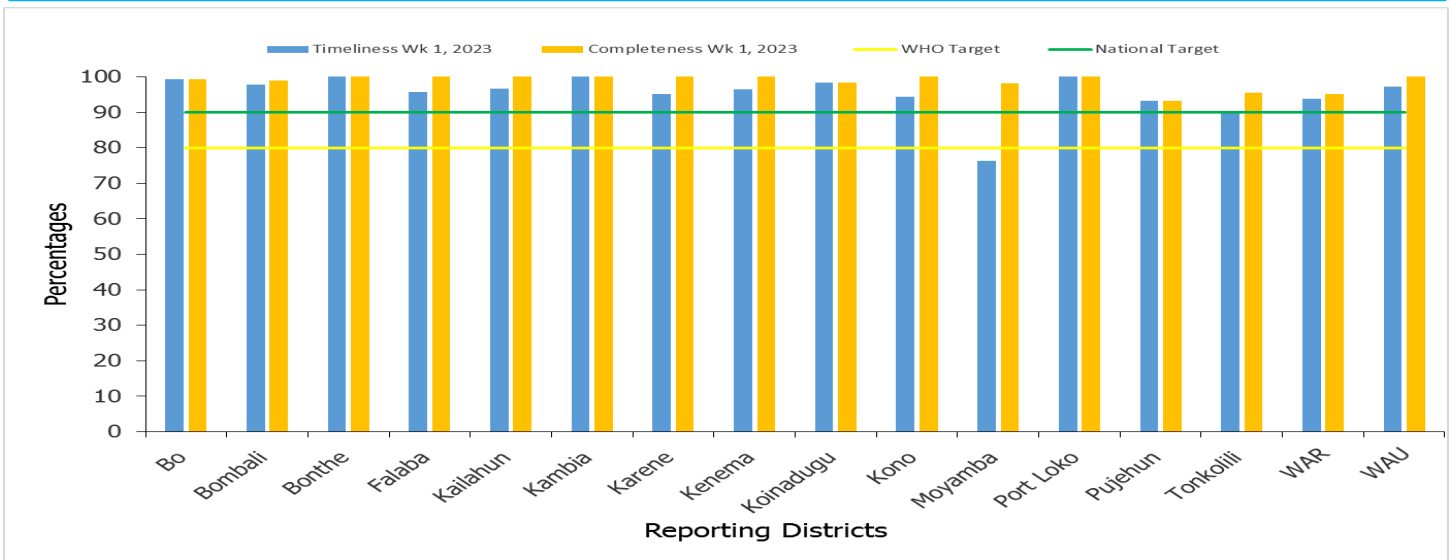
Week 52: 26th Dec, 2022 — 1st Jan, 20

- **Animal Bite (Dog):** Fifteen (15) Dog bite cases were reported this week. Of the cases, two were under fives and thirteen were above five years of age. The highest number of cases were from Bombali and Kono (5)
- **Animal Bite (Snake):** Ten (10) Snake bite cases were reported this week. The cases were above five years of age. The highest number of cases were from Pujehun (3), Koinadugu and Port Loko (2) each per districts
- **Maternal death:** Seven (7) maternal deaths were reported from WAU (2), Bonthe, Kailahun, Karene, Port Loko and Tonkolili (1) each per districts
- **Measles:** Seventy - six (76) cases of suspected Measles were reported this week. Of the cases, fifty—nine were under fives and seventeen were above five years of age. The highest number of cases were from WAR (41), WAU (35). The cases were investigated and samples sent to CPHRL for confirmation
- **Neonatal Tetanus :** One (1) case of Neonatal Tetanus was reported from WAR this week. The case was investigated and details of the investigation is yet to be sent to national

KEY HIGHLIGHTS FOR COVID-19

- **COVID-19 :** No confirm case was reported this week
- **COVID-19 Death:** No death related to COVID-19 was reported this week
- **COVID-19 Recovery:** No recovery was reported for this week

Completeness and Timeliness of Weekly report by district, (Epi Week 52, 2022)

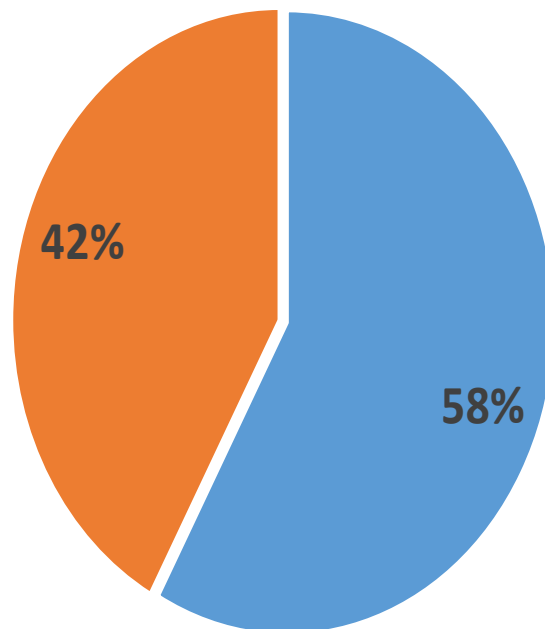


For week 52, a total of 15 out of 16 districts achieved both the WHO and national target for timeliness and completeness, while one didn't met both WHO and national target for timeliness but met completeness

Key highlights on COVID-19 Surveillance updates (Epi Week 52, 2022)

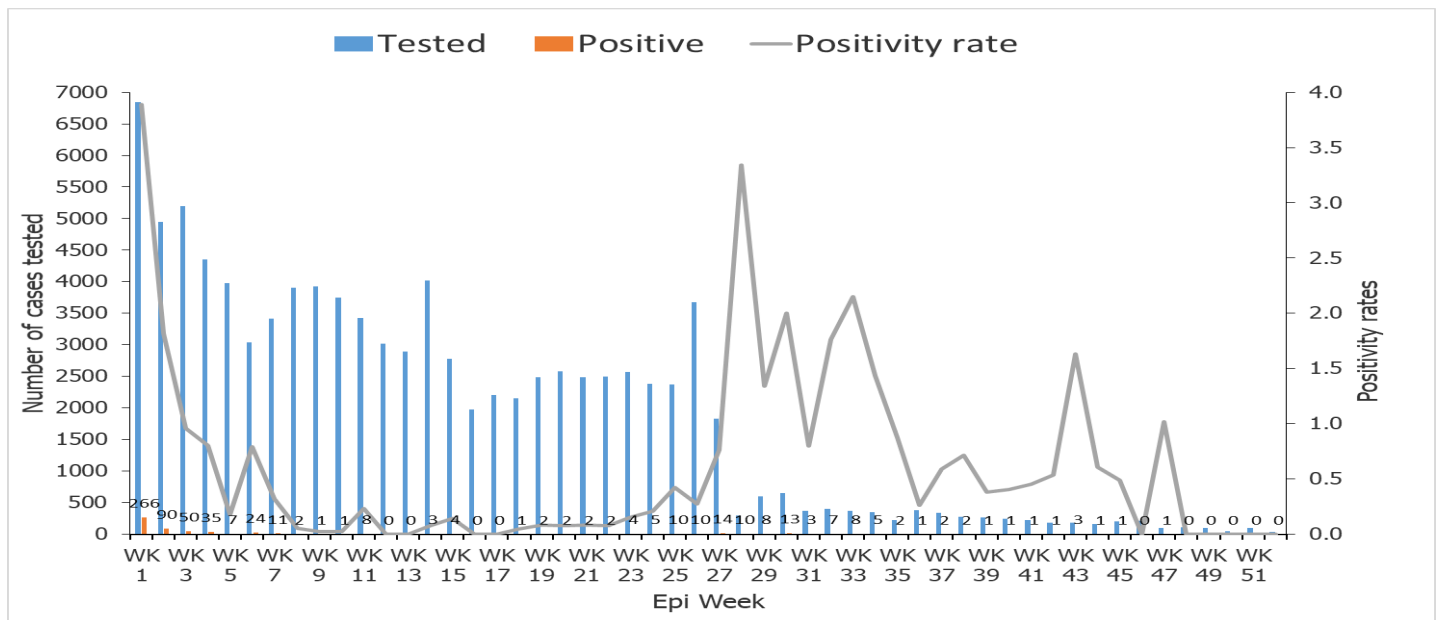
- A total of 76 reporting sites conducting COVID-19 RDT at facility level
- A total of 34 RDT and 15 departure testing were conducted with zero positive
- 0 Confirmed COVID-19 case reported: (Source: Both PCR & Ag-RDTs test result)
- 0 Death reported (Source: DHIS2 eCBDS)
- 0 recovered reported: (Source: DHIS2 eCBDS)

Cumulative COVID-19 test conducted by sex (20th March, 2020 – 26th December, 2022) N=7730



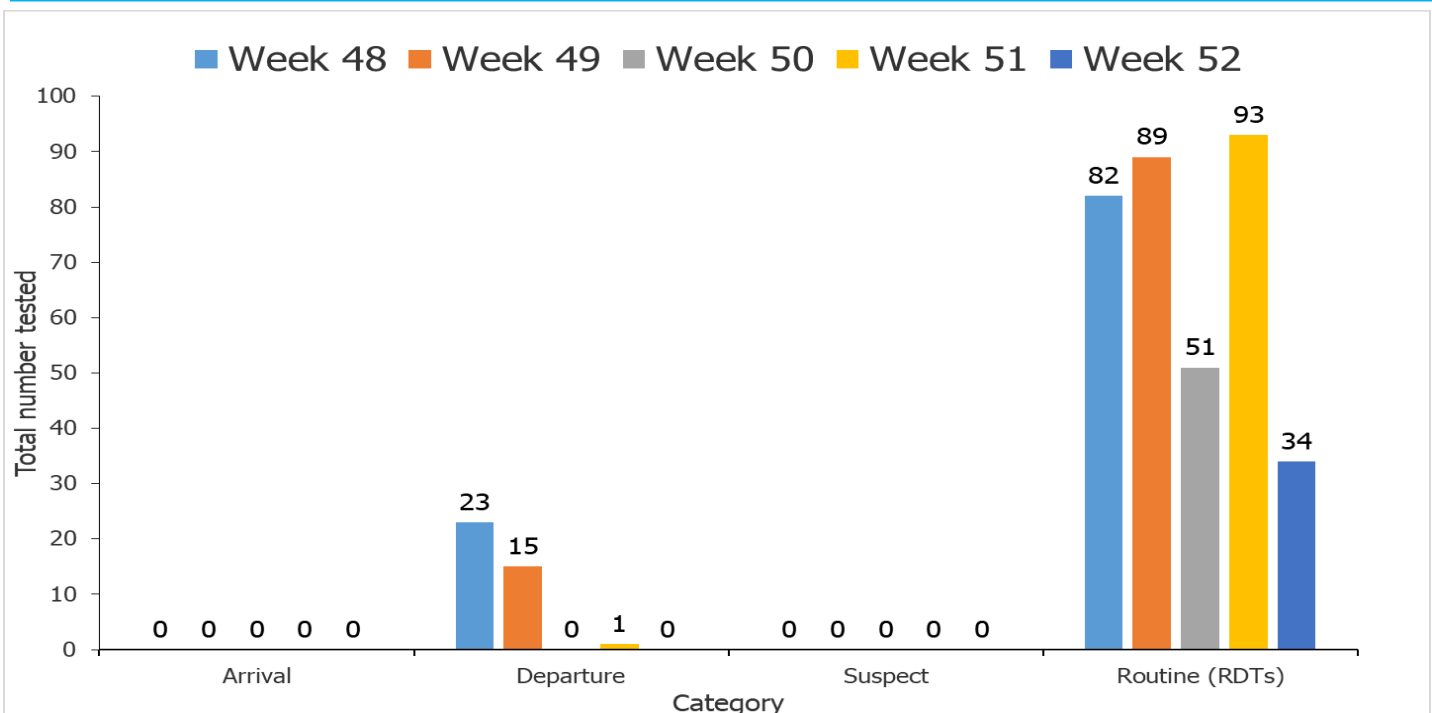
■ Male ■ Female

Positivity rate of COVID-19 confirmed cases (Epi Week 1 - 52, 2022)



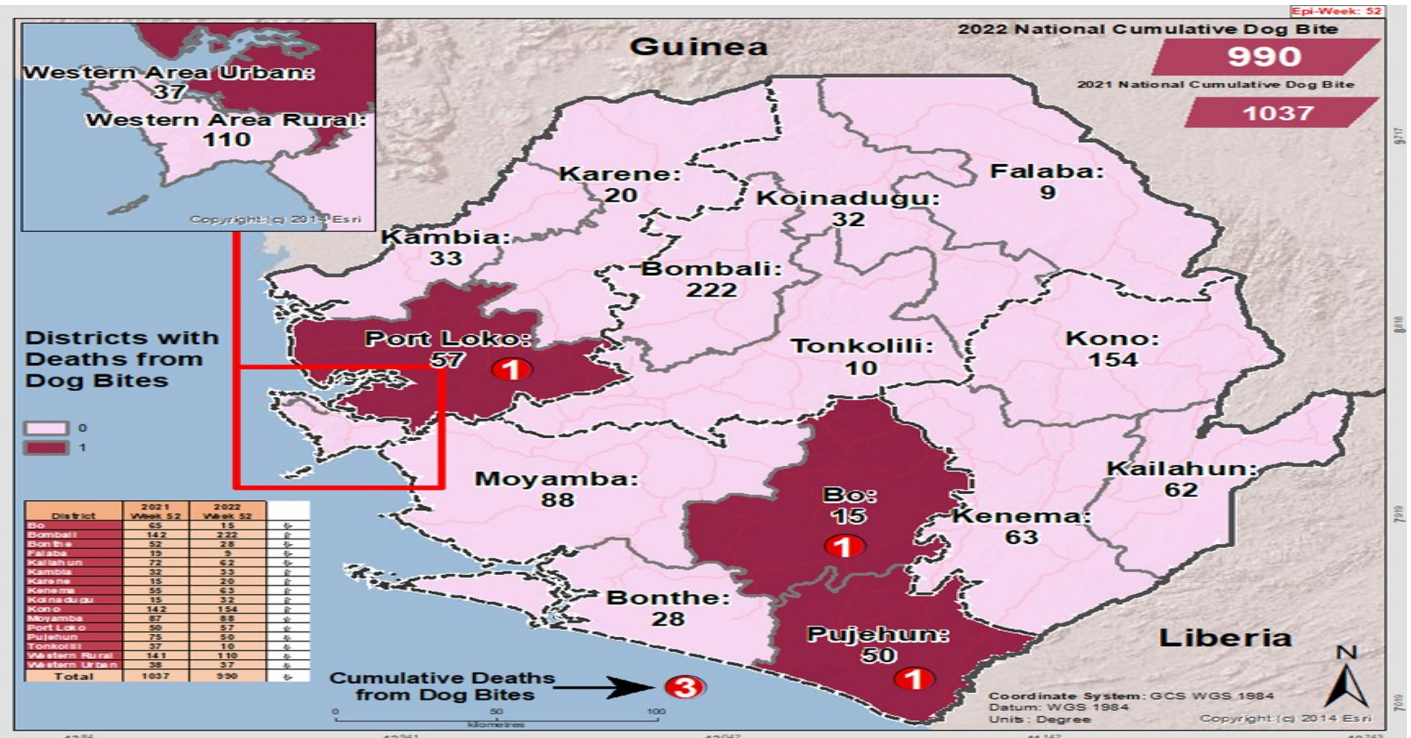
The positivity rate has been increasing over the few weeks with reported confirmed cases from various districts. However it dropped again to zero in week 33 and has been fluctuating again over the past weeks

Cumulative COVID-19 test conducted by Category (Epi Week 48 – 52, 2022) N=388



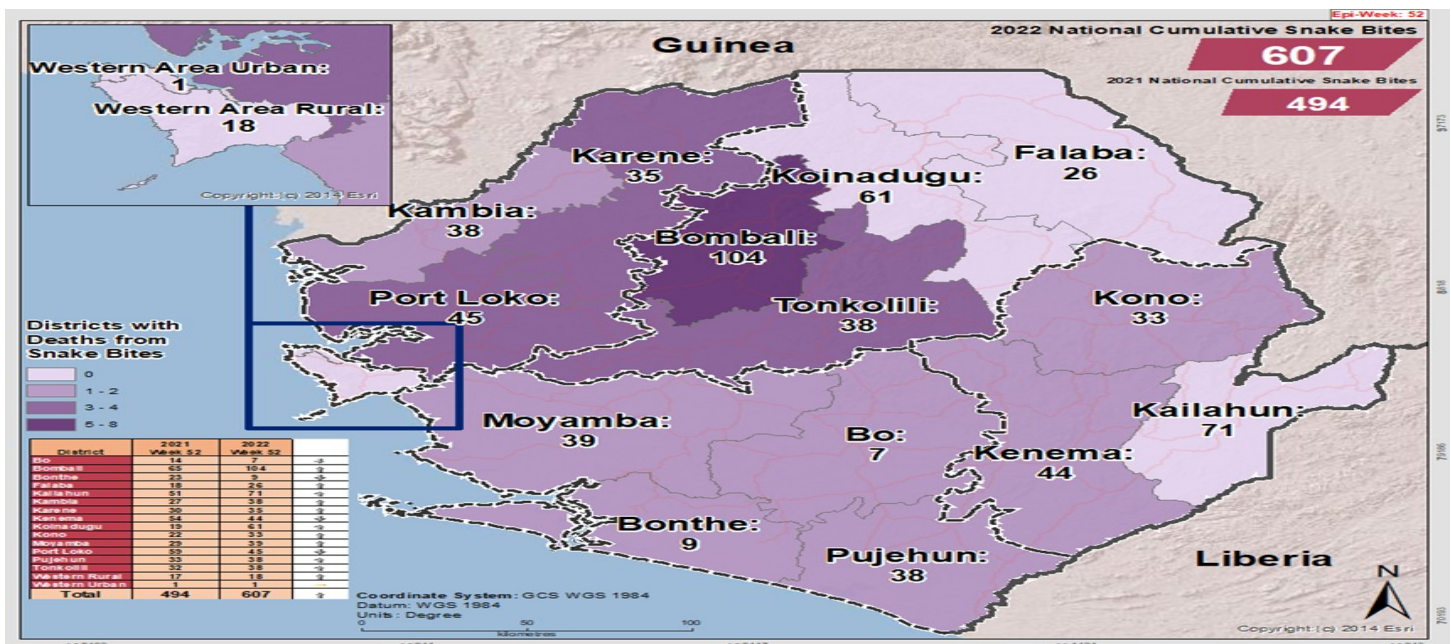
A greater proportion of testing is been done for routine as RDT testing is been promoted at health facility level. The COVID-19 response has been transitioned to the Ministry of Health and Sanitation.

Cumulative Animal Bite (Dog) cases reported by districts (Epi Week 1 - 52, 2021 & 2022)



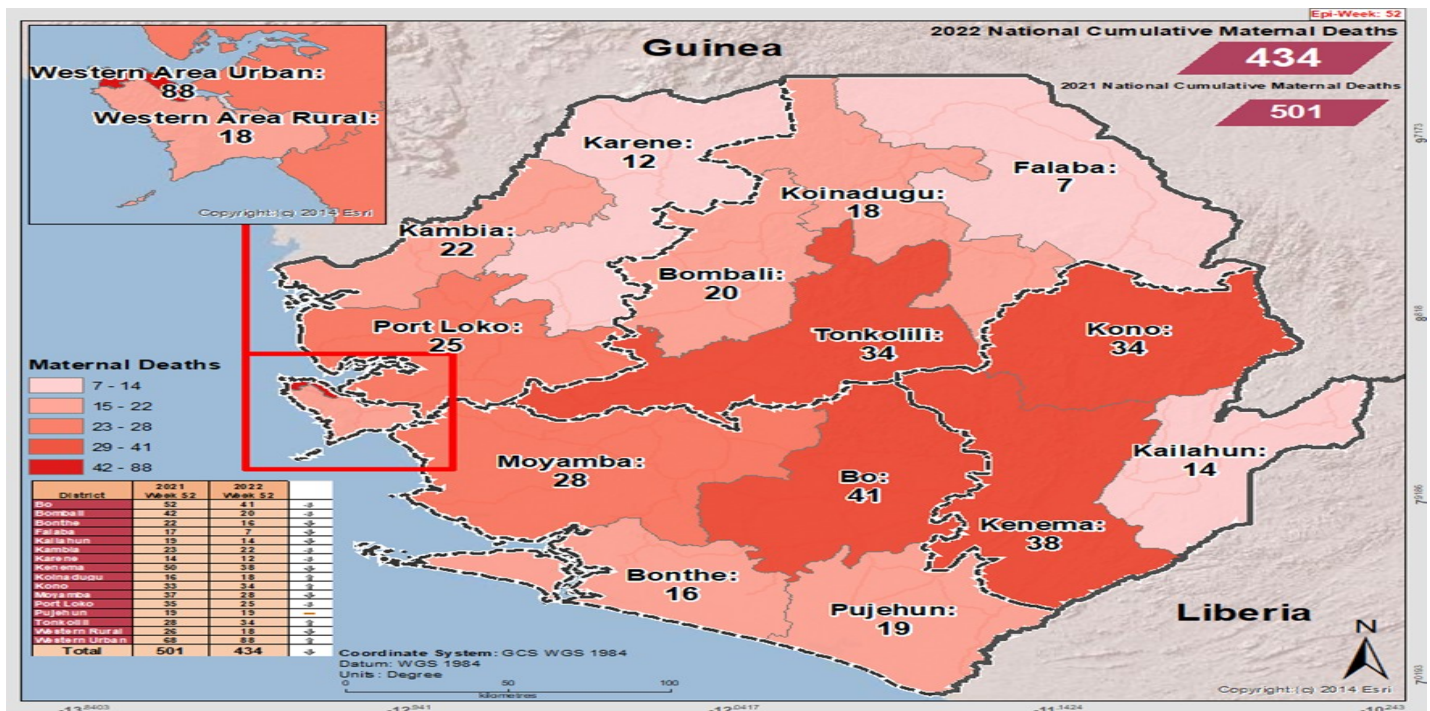
For week 52 of 2022, fifteen Dog bite cases were reported from seven districts. The cumulative number of cases countrywide is 990. The districts of Bombali, WAR, Kono, Kambia, Moyamba, Kailahun, Kenema, Pujehun and Port Loko have reported higher numbers of Dog bite cases. Port Loko and Pujehun district have reported one death each due to clinical Rabies

Cumulative Animal bite (Snake) reported by districts (Epi Week 1 - 52, 2021 & 2022)



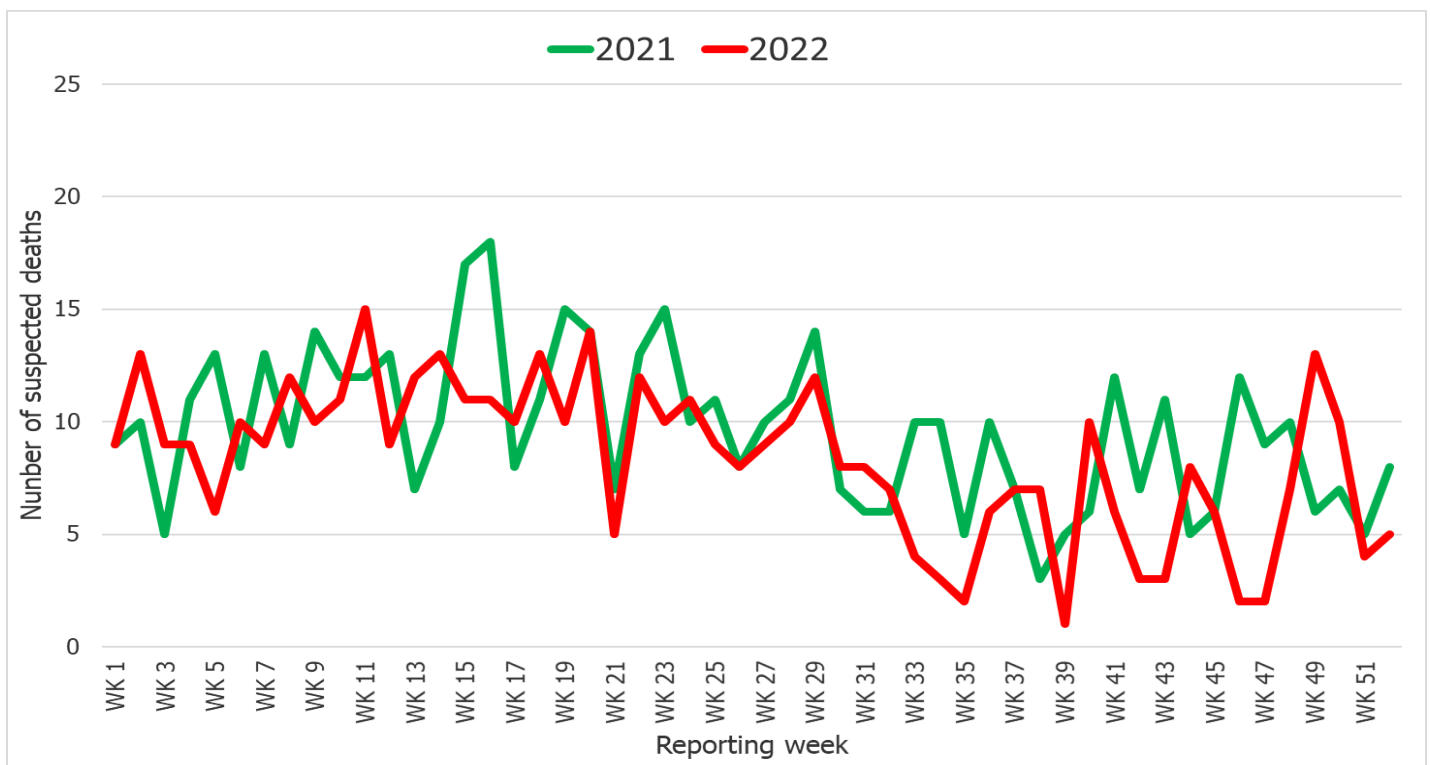
For week 52 of 2022, a total of ten (10) snake bites were reported from six districts. The districts that have recorded higher numbers of snake bites are Bombali, Koinadugu, Karene, Kenema, Tonkolili, Kailahun, Moyamba, Port Loko, Pujehun, Kono and Kambia district. The cumulative total since the start of the year is 510 countrywide. Twenty deaths due to snake bites have been reported from Bombali, Port Loko and Tonkolili (3) each per districts, Karene, Kenema and Pujehun (2) each and Bo, Bonthe, Kambia, Kono and Moyamba (1) each per districts

Cumulative Maternal Death reported by districts (Epi Week 1 - 52, 2021 & 2022)



For week 52 of 2022, seven maternal deaths were reported from six districts. The cumulative deaths since the start of the year is 434 countrywide.

Compared Maternal Deaths by year (Epi Week 1 - 52, 2021 & 2022)



In comparison with 2021, the period of week 52 of 2022 reported less number of deaths compared to that of 2021 same period.

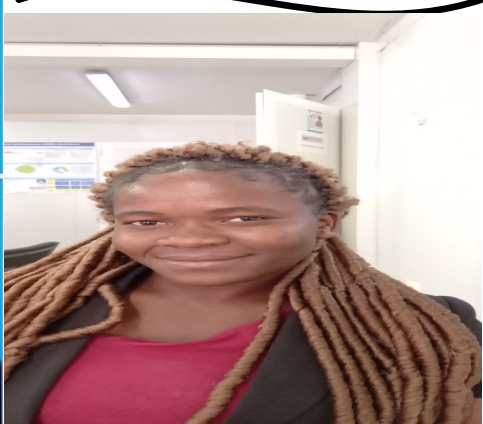
NATIONAL WEEKLY BULLETIN PRODUCTION TEAM



Editor: Charles Keimbe



Publisher: Mr. Harold Thomas



Co-Editor: Haja F Bangura



Data Analyst: Mr. Samba Kamara