

# 20



# 22

**GOVERNMENT OF SIERRA LEONE**  
**MINISTRY OF HEALTH AND SANITATION**  
**DIRECTORATE OF HEALTH SECURITY AND EMERGENCIES**

**WEEK 50**

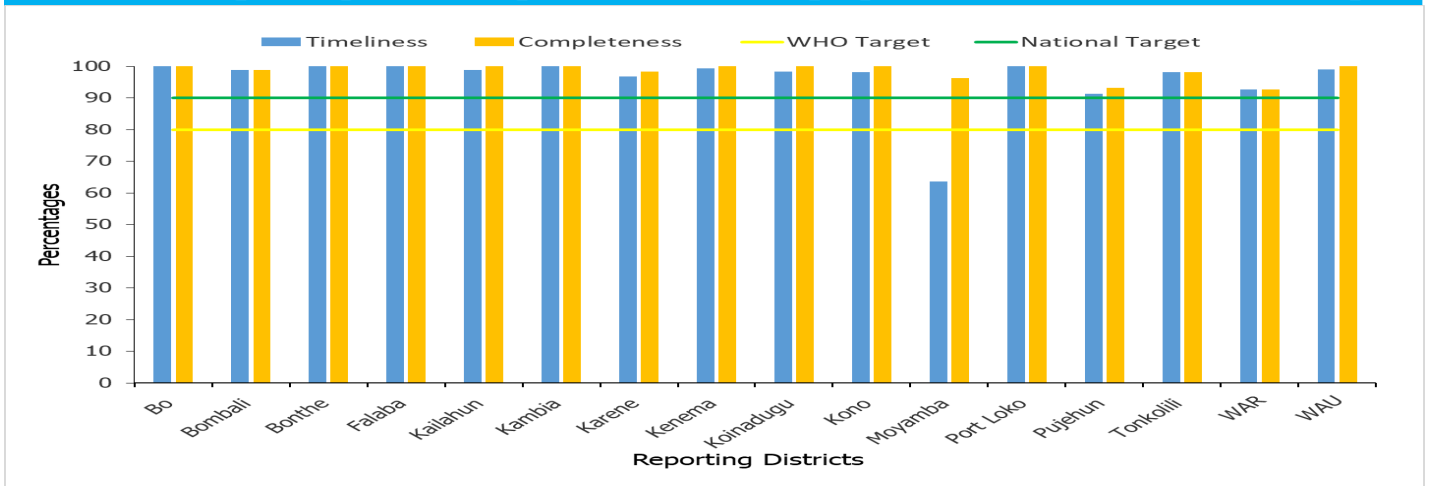
**Week 50: 12th — 18th Dec, 2022**

- **Acute Flaccid Paralysis (AFP):** One (1) case of AFP was reported in an under five this week from Port Loko. The case was investigated and sample sent to CPHRL for confirmatory shipment
- **Animal Bite (Dog):** Seventeen (17) Dog bite cases were reported this week. Of the cases, two were under fives and fifteen were above five years of age. The highest number of cases were from Kono (6), Bombali, Koinadugu and WAR (2) each per districts
- **Animal Bite (Snake):** Seven (7) Snake bite cases were reported this week. Of the cases, one was under five and six were above five years of age. The highest number of cases were from Bombali (2)
- **Maternal death:** Eight (8) maternal deaths were reported from Bonthe and Pujehun (2), Bo, Kailahun, Kenema and WAU (1) each per districts
- **Measles:** Forty - one (41) cases of suspected Measles were reported this week. Of the cases, thirty-seven were under fives and four were above five years of age. The highest number of cases were from WAU (21), WAR (19). The cases were investigated and samples sent to CPHRL for confirmation
- **Yellow Fever :** Three (3) cases of suspected Yellow Fever were reported from WAR this week. The cases were under were under fives years of age from Kono (2), Moyamba (1). The cases were investigated and samples sent to CPHRL for confirmation
- **Bacterial Meningitis:** One (1) cases of suspected Meningitis was reported in an under five from WAU this week .The case was investigated and sample sent to CPHRL for confirmation

**KEY HIGHLIGHTS FOR COVID-19 FOR THE WEEK**

- **COVID-19 :** No confirm case was reported this week
- **COVID-19 Death:** No death related to COVID-19 was reported this week
- **COVID-19 Recovery:** No recovery was reported for this week

**Health Facility Completeness and Timeliness of Weekly report by district, (Epi week 50, 2022)**

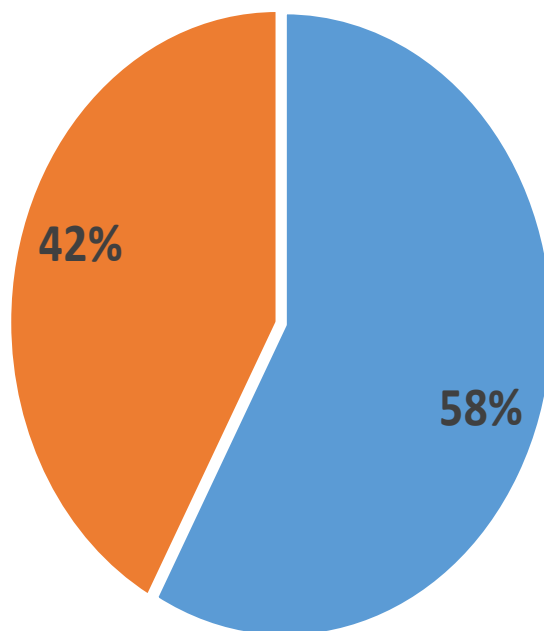


For week 50, a total of 15 out of 16 districts achieved both the WHO and national target for timeliness and completeness, while one met national target for completeness and couldn't met the WHO target for timeliness

## Key highlights on COVID-19 Surveillance updates (Epi Week 50, 2022)

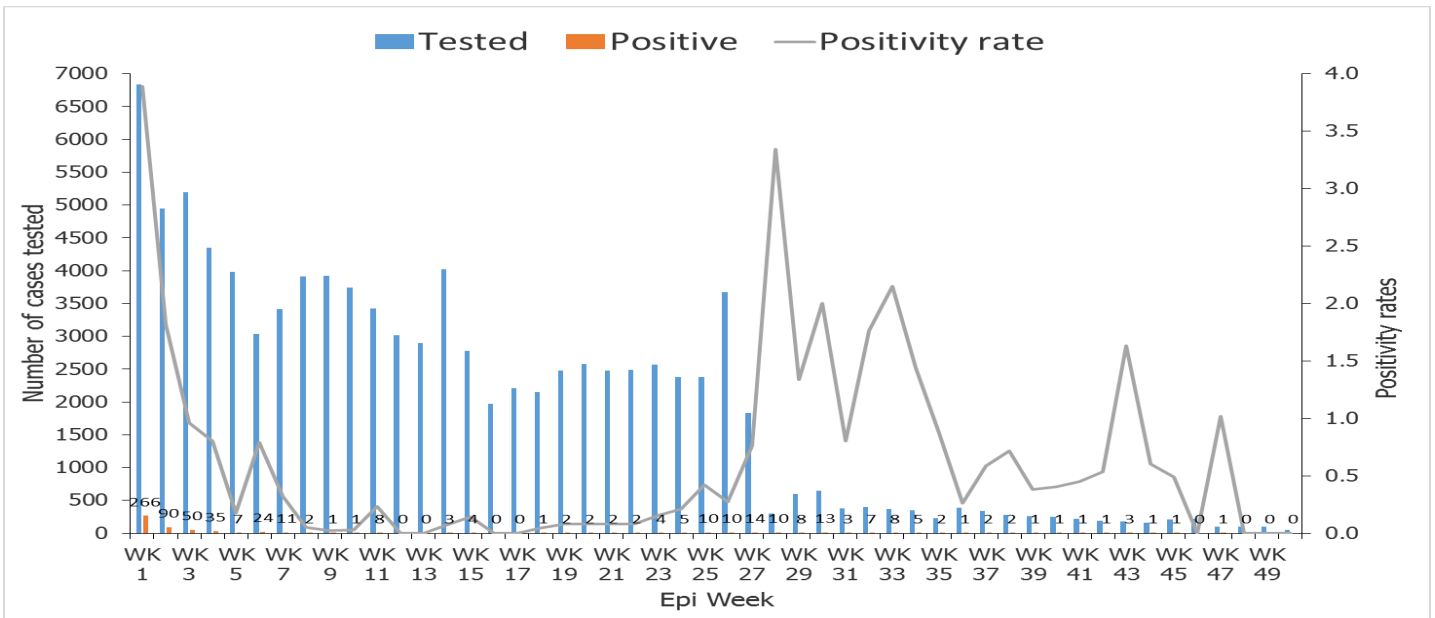
- A total of 76 reporting sites conducting COVID-19 RDT at facility level
- A total of 51 RDT and 15 departure testing were conducted with zero positive
- 0 Confirmed COVID-19 case reported: (Source: Both PCR & Ag-RDTs test result)
- 0 Death reported (Source: DHIS2 eCBDS)
- 0 recovered reported: (Source: DHIS2 eCBDS)

## Cumulative COVID-19 confirmed cases by sex (30<sup>th</sup> March 2020 – 18<sup>th</sup> December, 2022) n= 7730



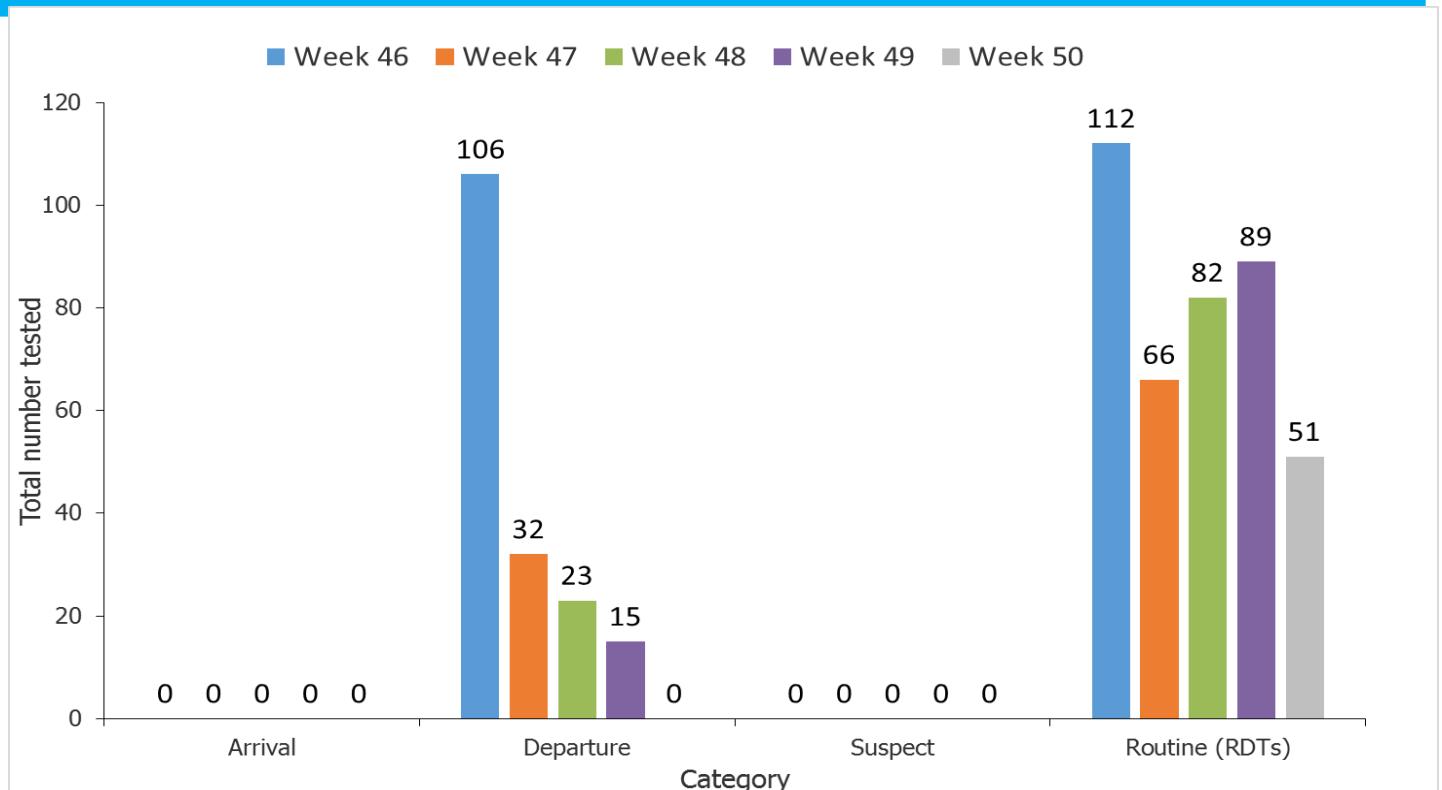
■ Male ■ Female

## Positivity rate of COVID-19 confirmed cases (Epi Week 1 - 50, 2022)



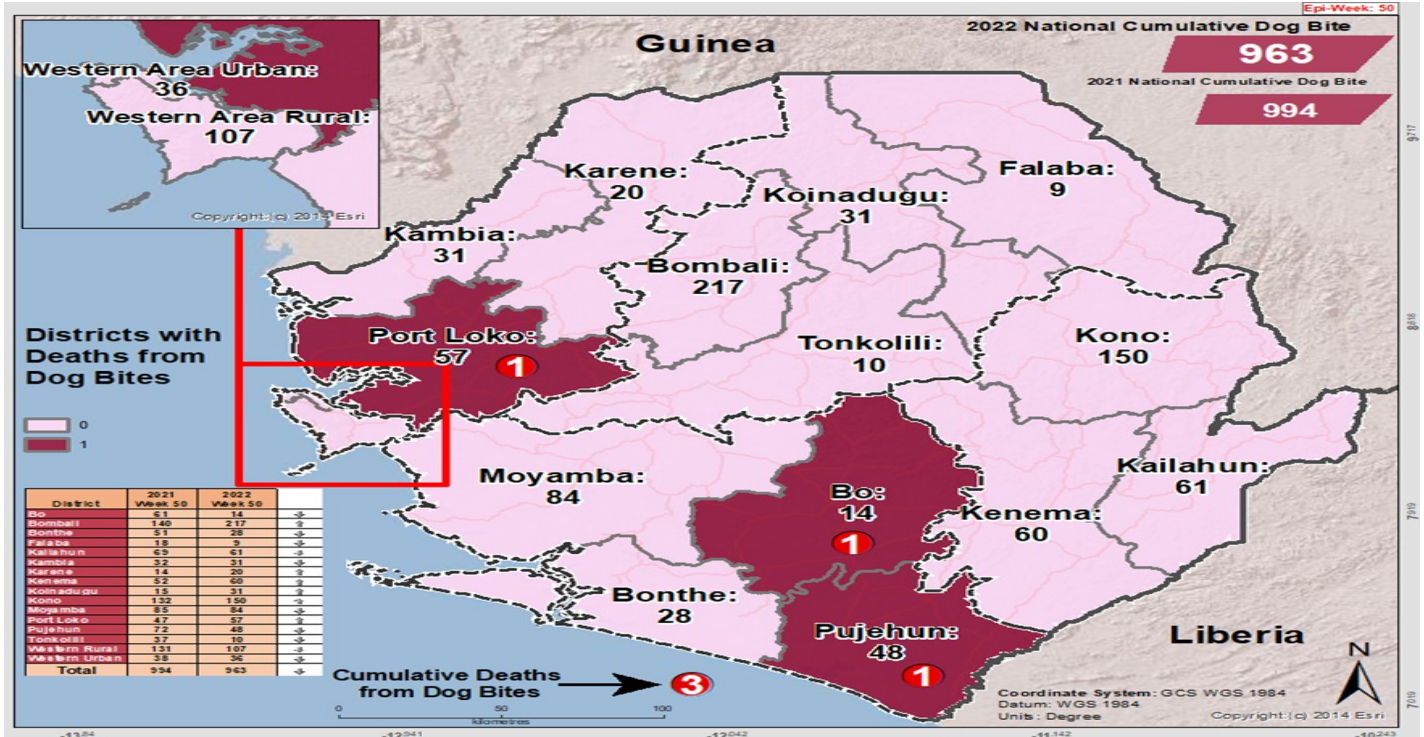
The positivity rate has been increasing over the few weeks with reported confirmed cases from various districts. However it dropped again to zero in week 33 and has been fluctuating again over the past weeks

## Cumulative COVID-19 test conducted by Category (Epi Week 46 – 50, 2022) N=576



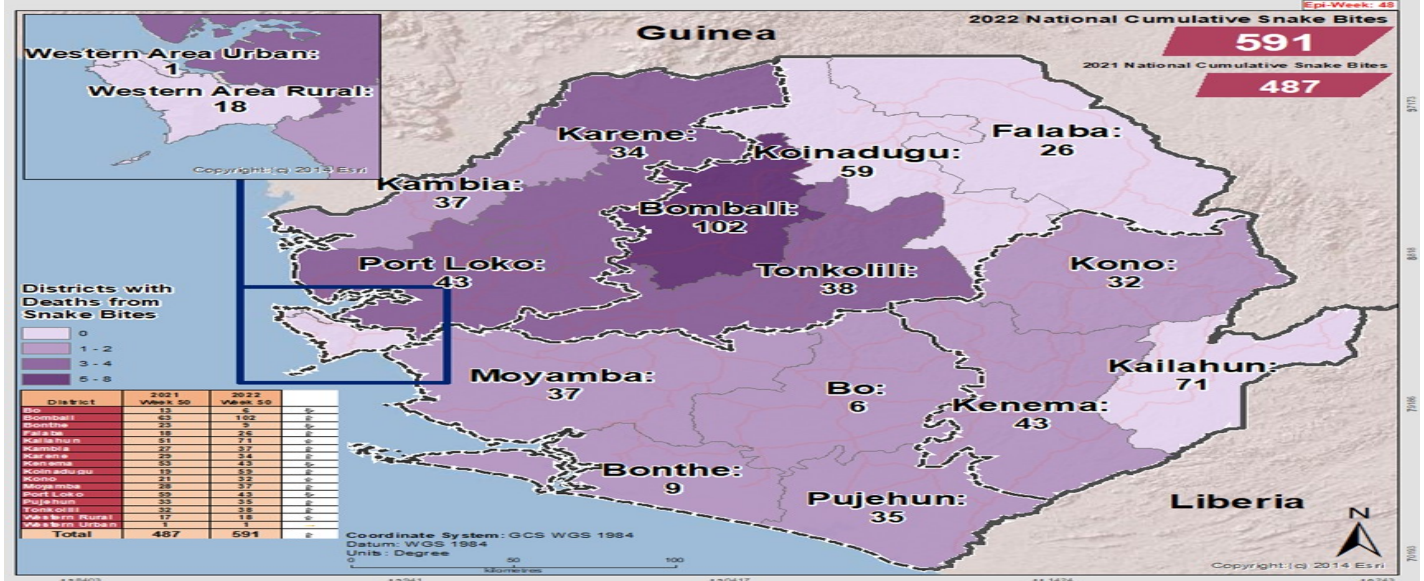
A greater proportion of testing is been done for departures and suspected cases. Routine RDT testing has been gradually gaining grounds in the country. The COVID-19 response has been transitioned to the Ministry of Health and Sanitation.

## Cumulative Animal Bite (Dog) cases reported by districts (Epi Week 1 - 50, 2021 & 2022)



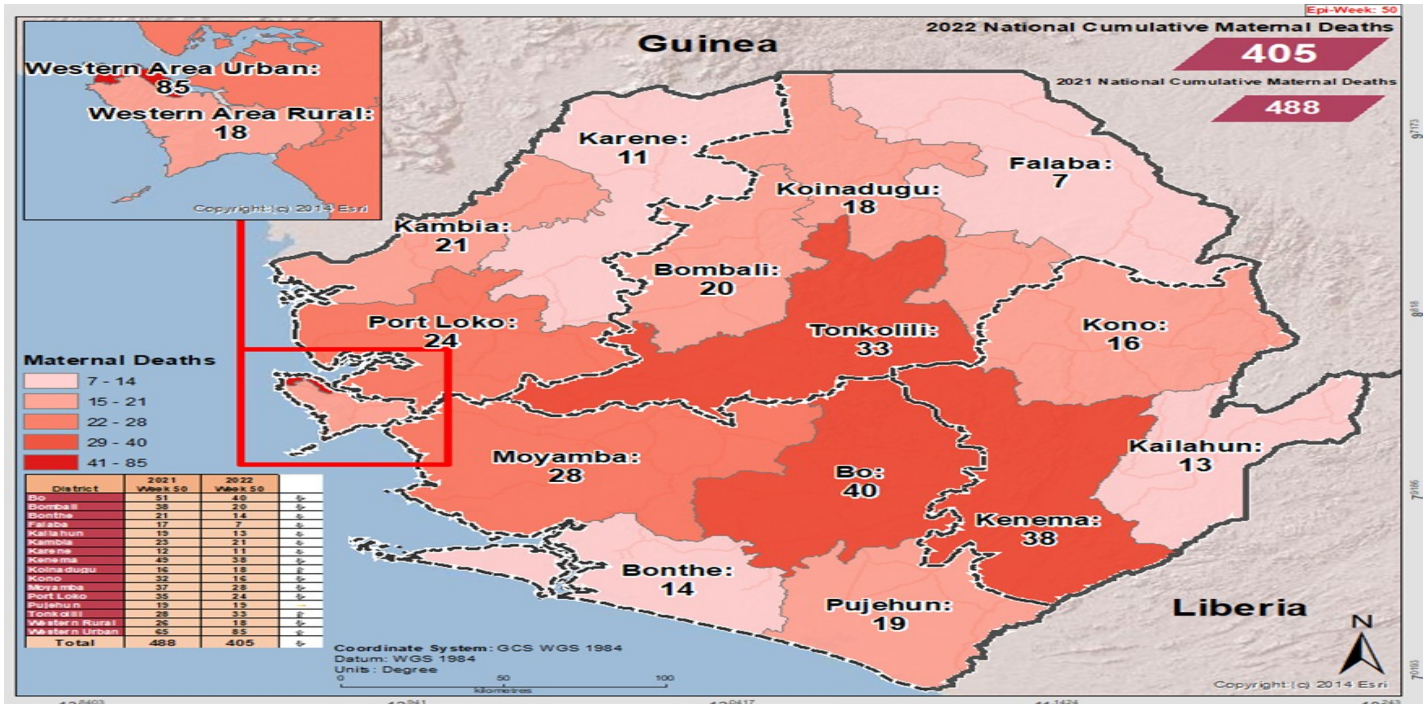
For week 50 of 2022, seventeen Dog bite cases were reported from nine districts. The cumulative number of cases countrywide is 963. The districts of Bombali, WAR, Kono, Moyamba, Kailahun, Kenema, Pujehun and Port Loko have reported higher numbers of Dog bite cases. Port Loko and Pujehun district have reported one death each due to clinical Rabies

## Cumulative Animal bite (Snake) reported by districts (Epi Week 1 - 50, 2021 & 2022)



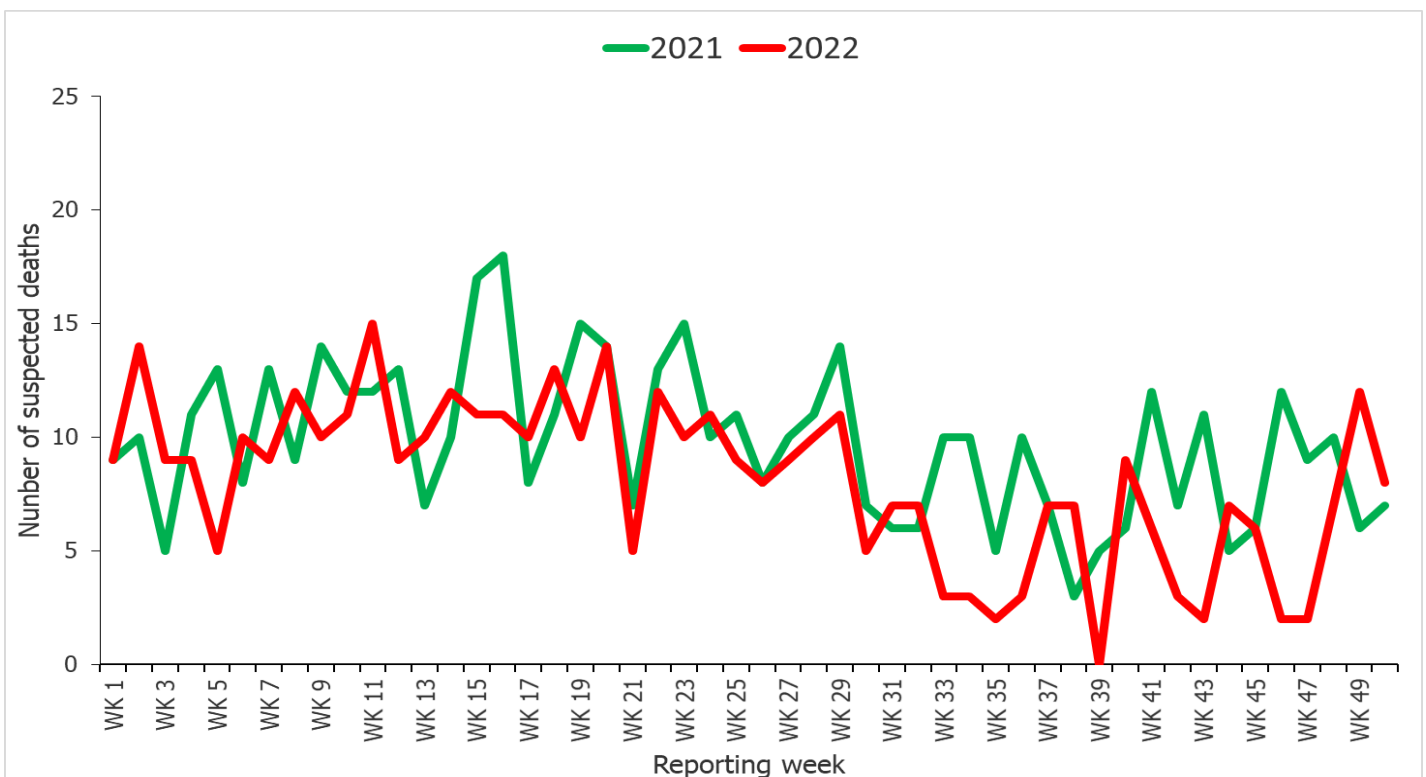
For week 50 of 2022, a total of seven (7) snake bites were reported from six districts. The districts that have recorded higher numbers of snake bites are Bombali, Koinadugu, Karene, Kenema, Tonkolili, Kailahun, Moyamba, Port Loko, Pujehun, Kono and Kambia district. The cumulative total since the start of the year is 510 countrywide. Twenty deaths due to snake bites have been reported from Bombali, Port Loko and Tonkolili (3) each per districts, Karene, Kenema and Pujehun (2) each and Bo, Bonthe, Kambia, Kono and Moyamba (1) each per districts

## Cumulative Maternal Death reported by districts (Epi Week 1 - 50, 2021 & 2022)



For week 50 of 2022, eight maternal deaths were reported from six districts. The cumulative deaths since the start of the year is 405 countrywide.

## Compared Maternal Deaths by year (Epi Week 1 - 50, 2021 & 2022)

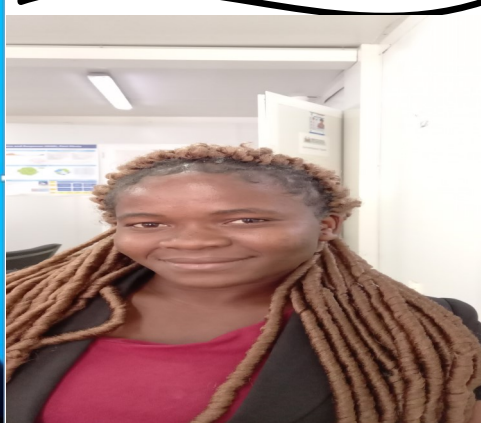


In comparison with 2021, the period of week 42 of 2022 reported less number of deaths compared to that of 2021 same period.

**NATIONAL WEEKLY BULLETIN PRODUCTION TEAM**



**Editor: Charles Keimbe**



**Publisher: Mr. Harold Thomas**

**Co-Editor: Haja F Bangura**

**Data Analyst: Mr. Samba Kamara**