

# 20 22



GOVERNMENT OF SIERRA LEONE  
 MINISTRY OF HEALTH AND SANITATION  
 DIRECTORATE OF HEALTH SECURITY AND EMERGENCIES

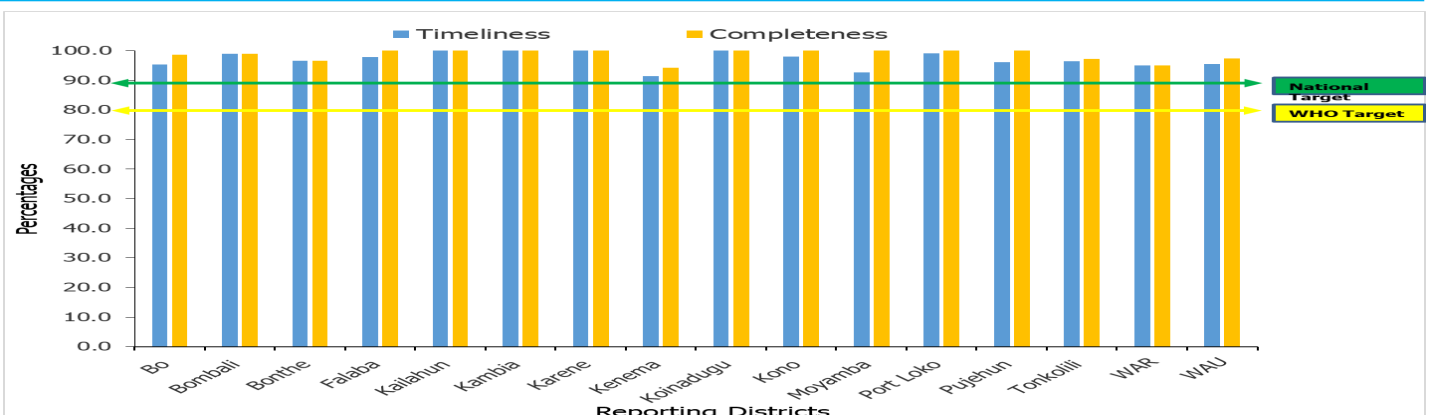
WEEK 35

Week 35: 29th Aug— 4th Sept, 2022

### KEY HIGHLIGHTS FOR COVID-19 FOR THE WEEK

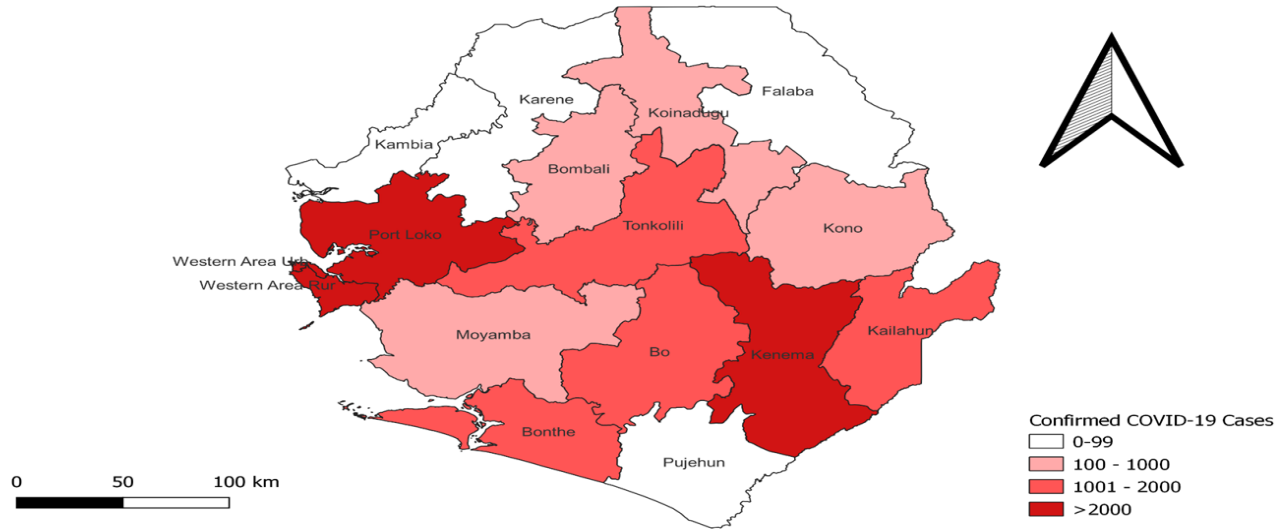
- Acute Flaccid Paralysis (AFP):** One (1) case of AFP was reported this week. The case was under five years of age from WAU districts. The case was investigated and sample sent to CPHRL for confirmatory shipment
- Animal Bite (Dog):** Ten (10) Dog bite cases were reported this week. Of the cases, two were under fives and eight were above fives years of age. The highest number of cases were from Kailahun, Kono, Moyamba and WAR (2) each per districts
- Animal Bite (Snake):** Fourteen (14) Snake bite cases with one death were reported this week, the death was from Bombali district. Of the cases, one was under five and thirteen were above fives years of age. The highest number of cases were from Bombali (4), Kenema (3) and Pujehun (2) districts
- Maternal death:** Two (2) maternal deaths were reported this week from Kenema and WAU districts.
- Measles:** Six (6) suspected cases of Measles were reported this week. Of the cases, five were under fives and one above five years of age from WAR (3), WAU (2), Moyamba (1) districts. The cases were investigated and samples sent to CPHRL for confirmation
- Suspected Yellow Fever :** Eight (8) suspected cases of Yellow Fever were reported this week. The cases were under five years of age from WAR (3), WAU (2). The cases were investigated and samples sent to CPHRL for confirmation
- COVID-19 :** No confirmed case was reported this week
- COVID-19 Death:** No death related to COVID-19 was reported this week
- COVID-19 Cumulative Recovered:** No Recovery related to COVID-19 was reported this week

## Health Facility Completeness and Timeliness of Weekly report by district, (Epi week 35, 2022)



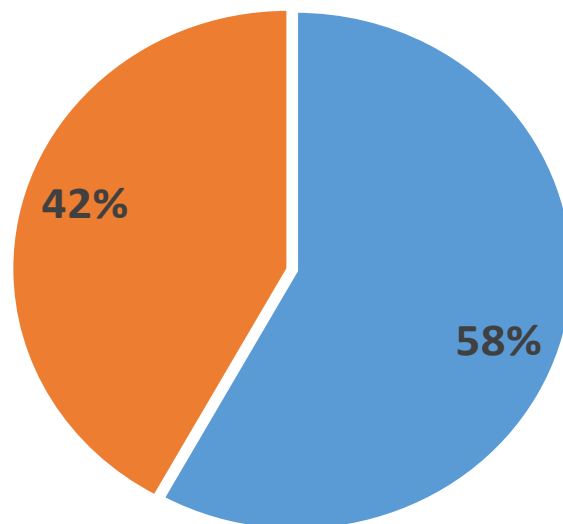
For week 35, all 16 districts achieved both the WHO and national target for timeliness and completeness

## Cumulative COVID-19 confirmed cases reported by district (30<sup>th</sup> March 2020 – 6<sup>th</sup> September, 2022) N = 7,730



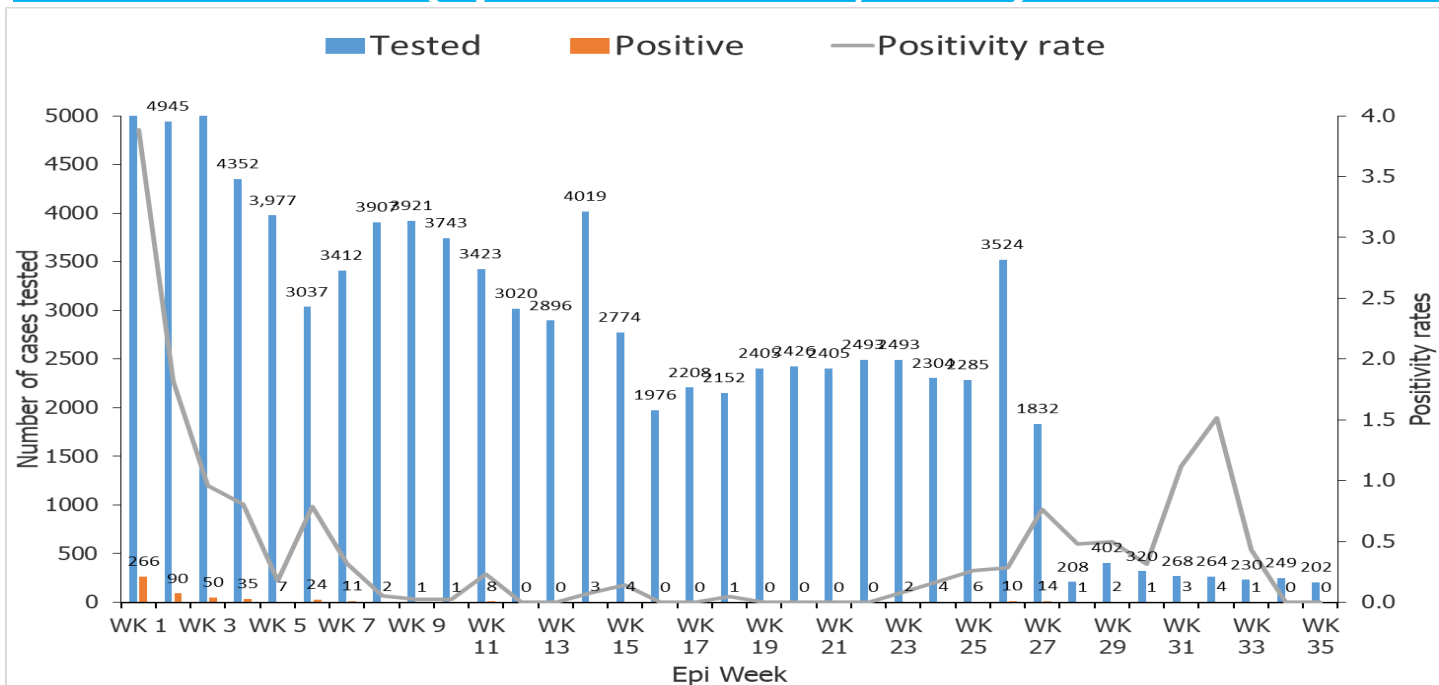
For the period of week 35, no confirmed COVID-19 case was reported this week. The total cumulative confirmed cases are 7,730. Western Area Urban and Rural still constitute the greater number of cases compared to the rest of the districts

## COVID-19 confirmed cases reported by sex (30<sup>th</sup> March 2020 – 6<sup>th</sup> September, 2022) N = 7,730



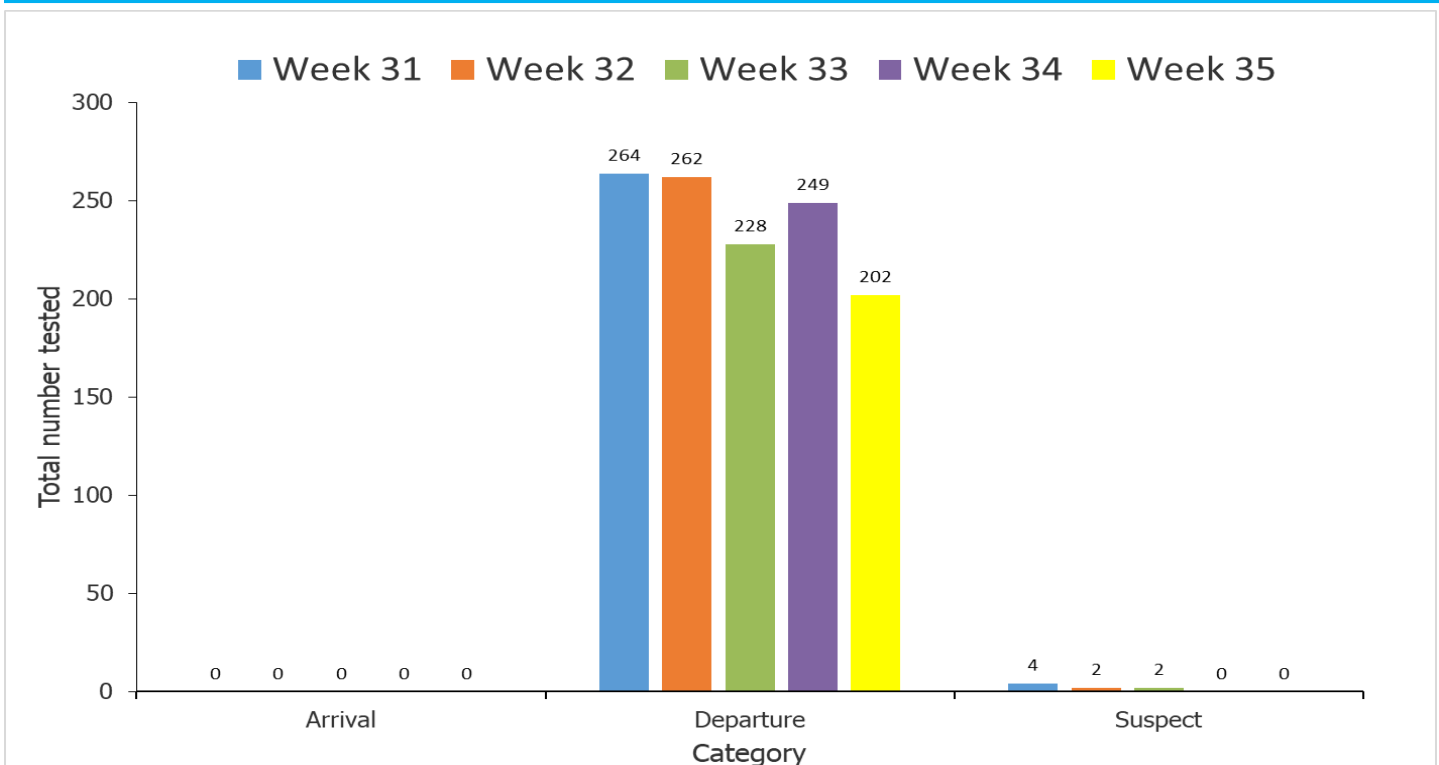
■ Male ■ Female

## Positivity rate of COVID-19 confirmed cases (Epi Week 1 - 35, 2022)



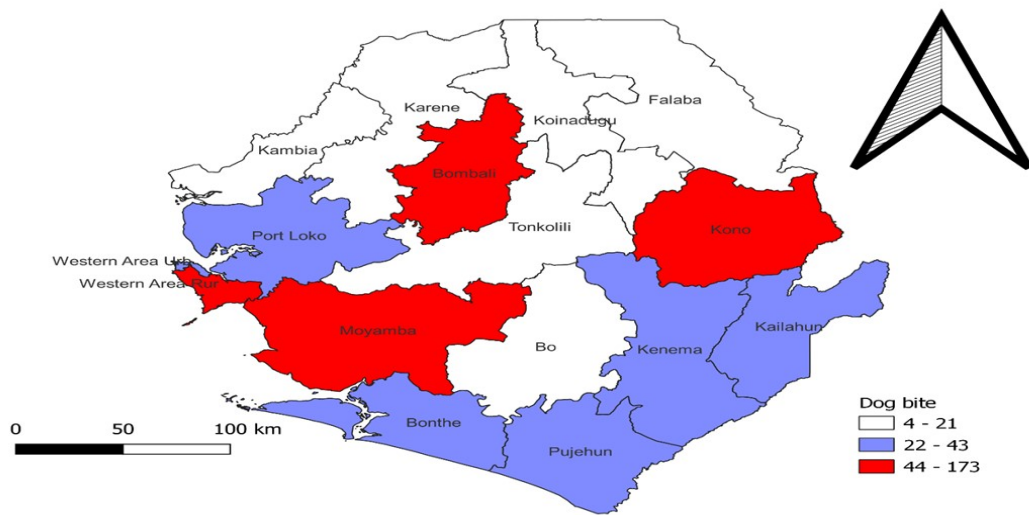
The positivity rate has been increasing over the few weeks with reported confirmed cases from various districts. However it dropped again to zero in week 33 and is still zero in weeks 34 and 35.

## Cumulative COVID-19 test conducted by Category (Epi Week 31 – 35, 2022) N=1,213



A greater proportion of testing is been done for departures with few suspected cases. The country has stopped testing arrivals. The response has been transitioned to the Ministry of Health and Sanitation.

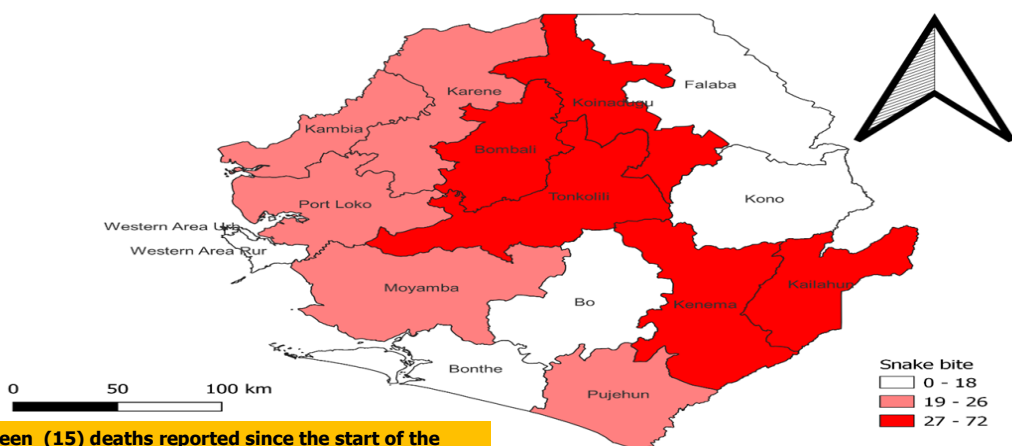
## Cumulative Animal Bite (Dog) cases reported by districts (Epi Week 1 - 35, 2022) N= 685



**Note: Cumulative of Two (2) Deaths** reported since the start of the year 1 each (PortLoko & Pujehun)

For week 35 of 2022, ten Dog bite cases were reported from six districts. The cumulative number of cases countrywide is 685. The districts of Moyamba, Bombali, Kono, and WAR have reported higher numbers of Dog bite cases. Port Loko and Pujehun (1) district has reported two death due to clinical Rabies

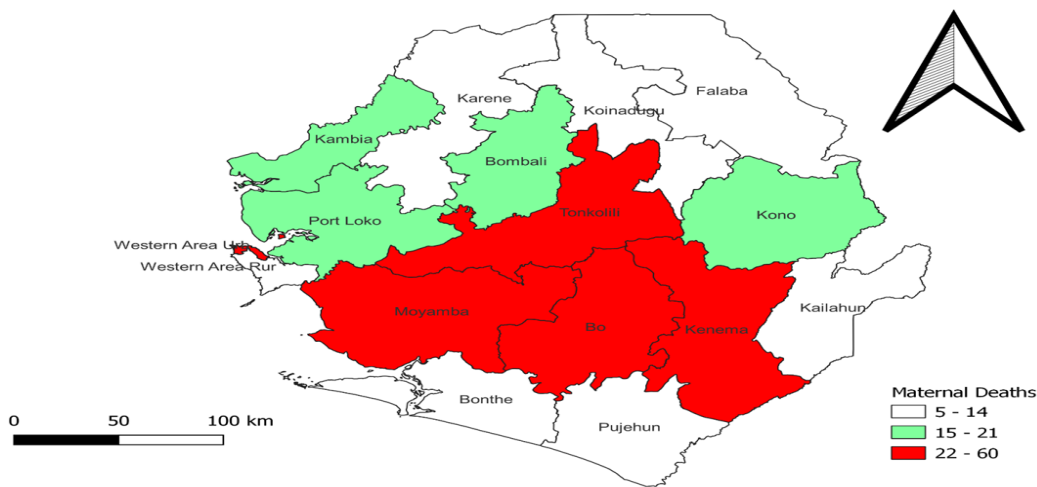
## Cumulative Animal bite (Snake) reported by districts (Epi Week 1 - 35, 2022) N=395



**Note: Fifteen (15) deaths** reported since the start of the year  
3 (Tonkolili), 2 each (Bombali, Pujehun & Karene), 1 each (Bo, Bonthe, Kenema, Kono, Moyamba & PortLoko)

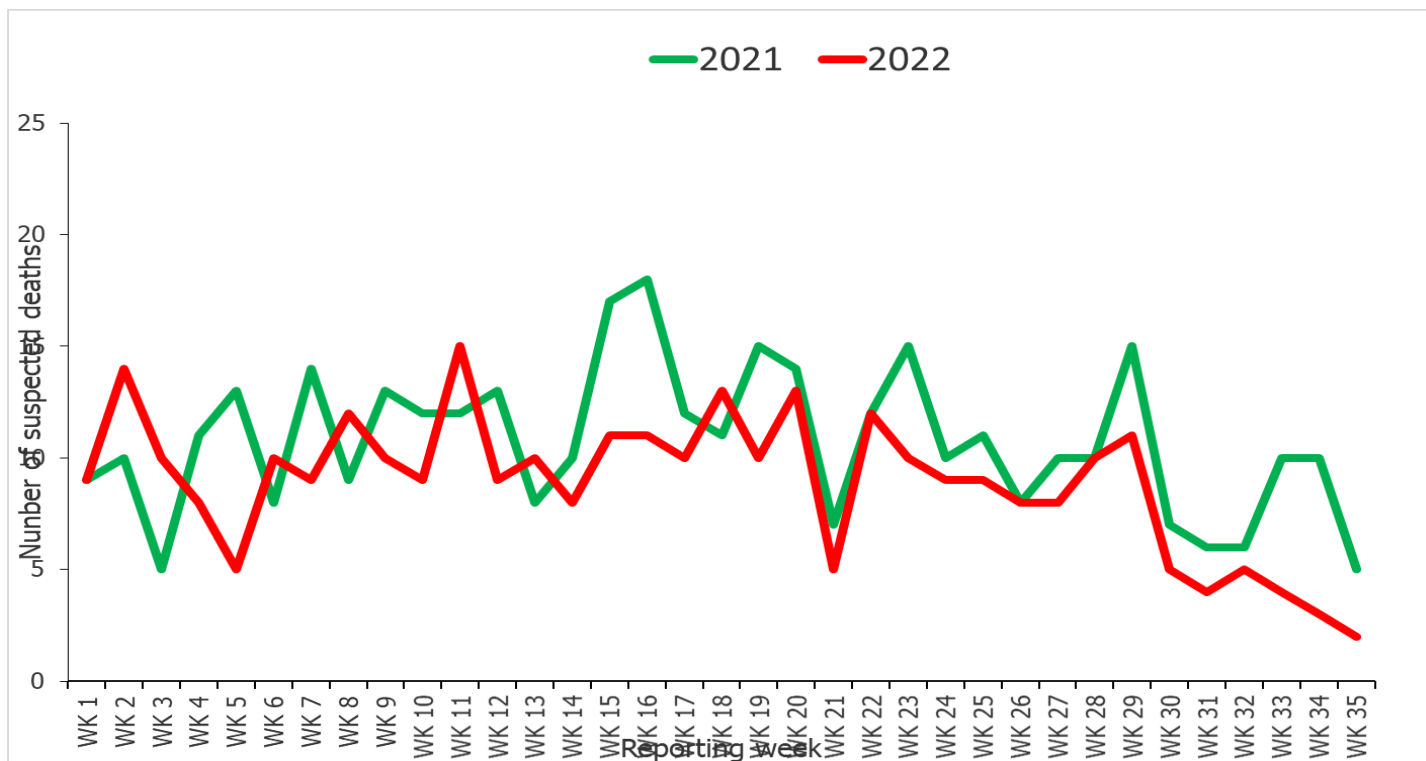
For week 35 of 2022, a total of fourteen (14) snake bites were reported from eight districts. The districts that have recorded higher numbers of snake bites are Koinadugu, Bombali, Kenema, Tonkolili and Kailahun district. The cumulative total since the start of the year is 395 countrywide.

## Cumulative Maternal Deaths reported by districts (Epi Week 1 - 35, 2022) N=311



For week 35 of 2022, two maternal deaths were reported from two districts. The cumulative deaths since the start of the year is 311 countrywide.

## Compared Maternal Deaths by year (Epi Week 1 - 35, 2021 & 2022)



In comparison with 2021, the period of week 35 of 2022 reported less number of deaths compared to that of 2021 same period.

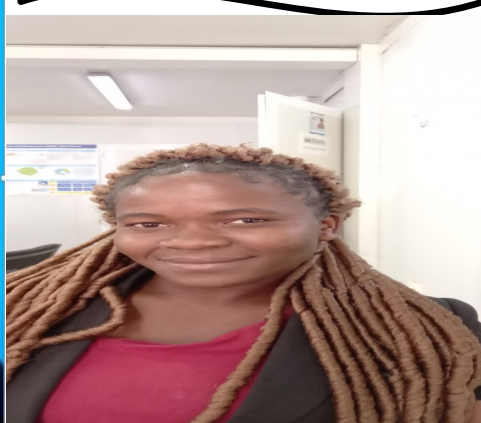
**NATIONAL WEEKLY BULLETIN PRODUCTION TEAM**



**Editor: Charles Keimbe**



**Publisher: Mr. Harold Thomas**



**Co-Editor: Haja F Bangura**



**Data Analyst: Mr. Samba Kamara**