

Corona Virus Disease (COVID-19) Situational Report

Report No.034 Date of Issue: 3rd May, 2020, 6pm GMT

- As at 3rd May 2020, there were **157** confirmed COVID-19 cases, **eight deaths** and **21 recoveries** in Sierra Leone
- Two new** confirmed COVID-19 cases were reported in the last 24 hours
- Bo District has reported the first COVID-19. Eight out of sixteen districts are now affected.
- Case Fatality Rate (CFR) is **5.1%** *
- A three-day nationwide lockdown started today. Inter-district travel restrictions and curfew also remain in place

*CFR: only confirmed COVID-19 cases are included in calculation of CFR

New	Confirmed	2
	Recoveries	0
	Deaths	0
Cumulative	Confirmed	157
	Recoveries	21
	Deaths	8
*Case Fatality Rate (%)		5.1%

HIGHLIGHTS

Summary of COVID-19 Cases in Sierra Leone as at 3rd May, 2020

District	Confirmed Cases		Probable Cases		Deaths		Recovered Cases
	New Confirmed Cases	Cumulative Confirmed Cases	New Probable cases	Cumulative Probable Cases	New Deaths	Cumulative Deaths	
Western Area Urban	0	102	0	0	0	7	14
Western Area Rural	0	22	0	0	0	0	2
Port Loko	0	7	0	0	0	0	4
Kenema	1	6	0	0	0	1	1
Tonkolili	0	3	0	0	0	0	0
Bombali	0	6	0	0	0	0	0
Bonthe	0	10	0	0	0	0	0
Bo	1	1	0	0	0	0	0
Total	2	157	0	0	0	8	21

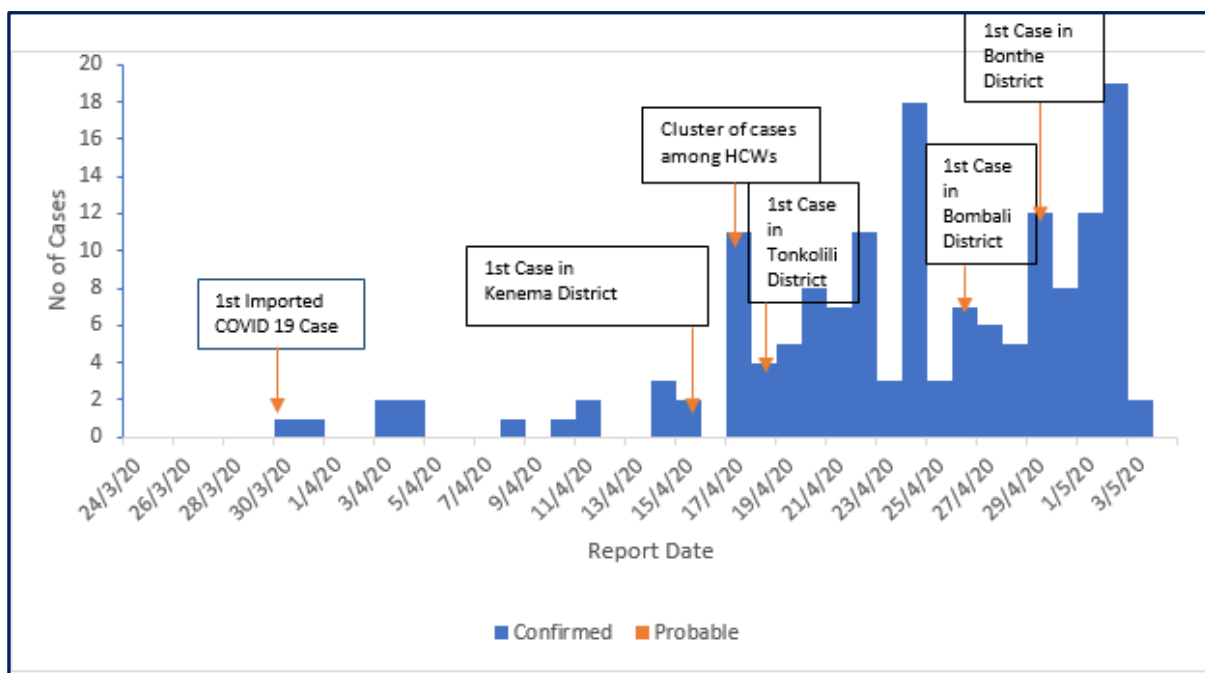


Figure 1: Reported COVID-19 cases in Sierra Leone as at 2nd May, 2020

- Since the first case of COVID-19 was reported on 30th March, 2020, the magnitude of the outbreak has increased and the outbreak has spread to **eight** out of sixteen **districts**
- Ninety -Six (61.1%) of all cases are contacts of confirmed cases, 31 (19.7%) cases are not linked to any transmission chains and nine (5.7) cases are travellers.

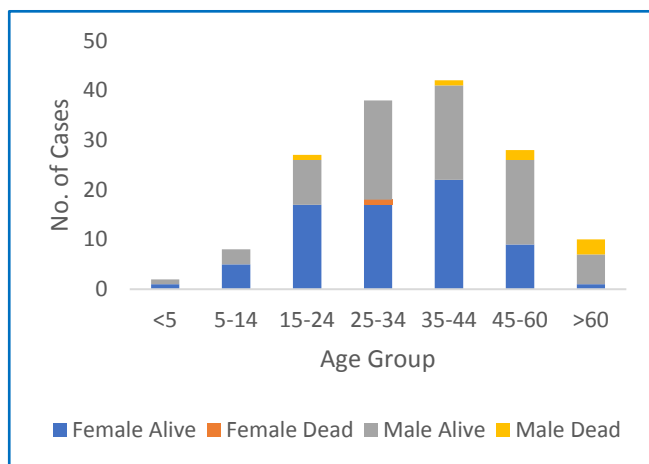


Figure 2: Age-Sex Distribution and Outcome of COVID-19 Cases

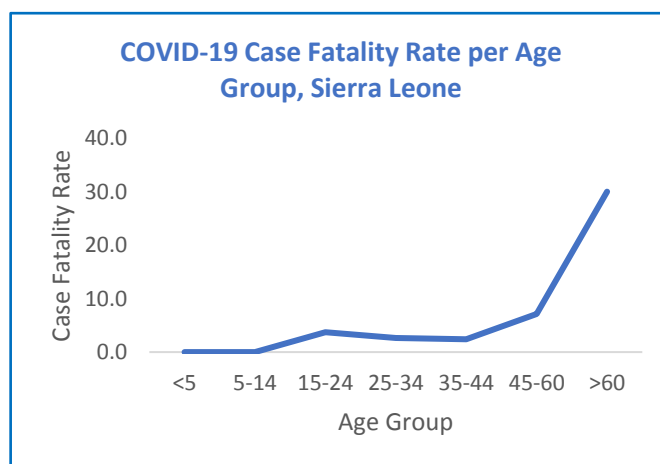


Figure 3: Age-Specific Case Fatality Rates

- Median Age of cases is 35 years (Range 2 months -76 years)
- Eighty-four (53.5%) are male
- One hundred and seven (68.1%) cases are aged 15-44 years
- Total deaths are eight including 7 males and 1 female
- All deaths have occurred among persons with underlying medical conditions including, diabetes, renal disease, hypertension and sickle cell anaemia.
- Case fatality rate increases with age and is highest (30%) among cases aged >60 years

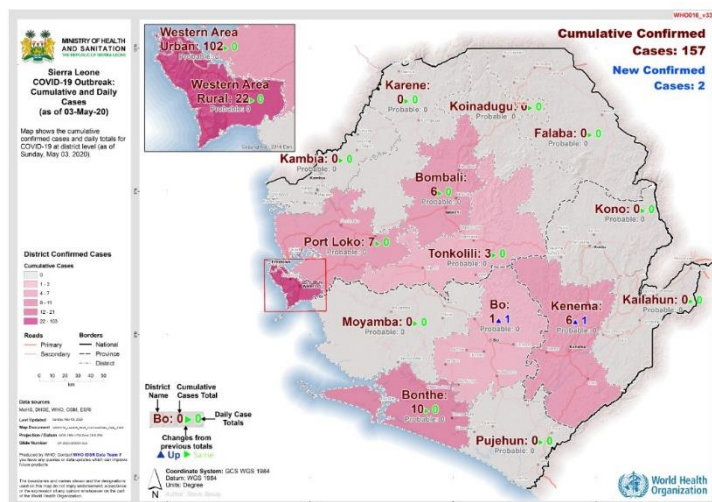


Figure 4: Geographical Distribution of Cases

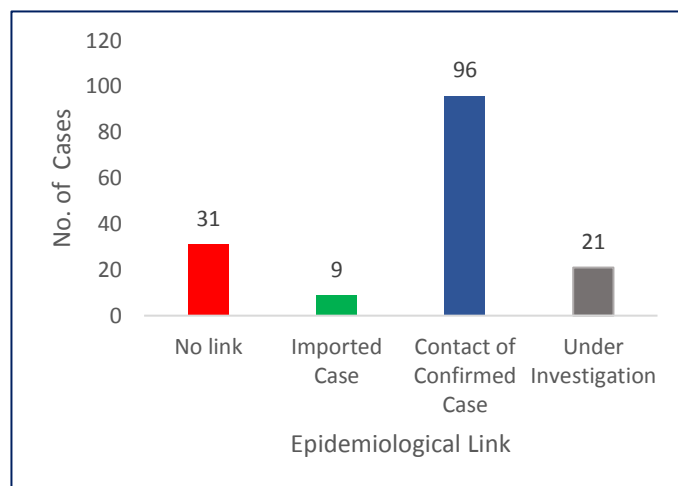


Figure 5: Epidemiological Links of COVID-19 Cases

- **Half** of all districts have reported COVID-19 Cases
- Highest incidence* is in Western Area Urban- **8.4 / 100,000** population
- National incidence is **2 / 100,000**

*Incidence based on confirmed cases. Low proportion of the population has been tested for COVID-19. Incidence is likely an underestimate

Technical Areas	Variable	No
Contact Tracing	Current no of high risk contacts on follow up	1305
	No. of contacts monitored in the last 24 hours	1305 (100%)
Quarantine	Total No. Currently under quarantine	1331
	Self-Quarantine	570 (42.8%)
	Institutional Quarantine	756 (57.2%)
Laboratory Testing	Laboratory tests done in last 24 hours	41
	Cumulative number of tests	2117
	No of positive tests (% positivity rate)	157 (7.4%)
Event Based Surveillance (last 24 hrs)	Total Alerts Received through 117 System	171
	No. of COVID related alerts	14
	No. of COVID related alerts investigated	14
Critical Care Patients	No of patients on a ventilator	0

This Situation Report was developed by:

Ministry of Health and Sanitation, Sierra Leone

For any comments or inquiries contact:

eocnsr2020@gmail.com