

Corona Virus Disease (COVID-19) Situational Report

Report No.032 Date of Issue: 1st May, 2020, 6pm GMT

<ul style="list-style-type: none"> As at 1st May 2020, there were 136 confirmed COVID-19 cases, eight deaths and 21 recoveries in Sierra Leone Twelve new confirmed COVID-19 cases and one death were reported in the last 24 hours Case Fatality Rate (CFR) is 5.9% * There will be a three-day nationwide lockdown from 3rd -5th May,2020 <p><i>*CFR: only confirmed COVID-19 cases are included in calculation of CFR</i></p>	New	Confirmed	12
		Recoveries	0
		Deaths	1
	Cumulative	Confirmed	136
		Recoveries	21
		Deaths	8
	*Case Fatality Rate (%)		5.9%

HIGHLIGHTS

Summary of COVID-19 Cases in Sierra Leone as at 1st May, 2020

District	Confirmed Cases		Probable Cases		Deaths		Recovered [∞] Cases
	New Confirmed Cases	Cumulative Confirmed Cases	New Probable cases	Cumulative Probable Cases	New Deaths	Cumulative Deaths	
Western Area Urban	10	94	0	0	1	7	14
Western Area Rural	0	12	0	0	0	0	2
Port Loko	0	7	0	0	0	0	4
Kenema	0	4	0	0	0	1	1
Tonkolili	0	3	0	0	0	0	0
Bombali	2	6	0	0	0	0	0
Bonthe	0	10	0	0	0	0	0
Total	12	136	0	0	1	8	21

- Since the first case of COVID-19 was reported on 30th March, 2020, the magnitude of the outbreak has increased and the outbreak has spread to seven out of sixteen districts
- The latest case reported in Tonkolili district is a resident of Bombali District, who travelled to Tonkolili to seek medical care
- The two new cases reported in Bombali are linked to a confirmed case

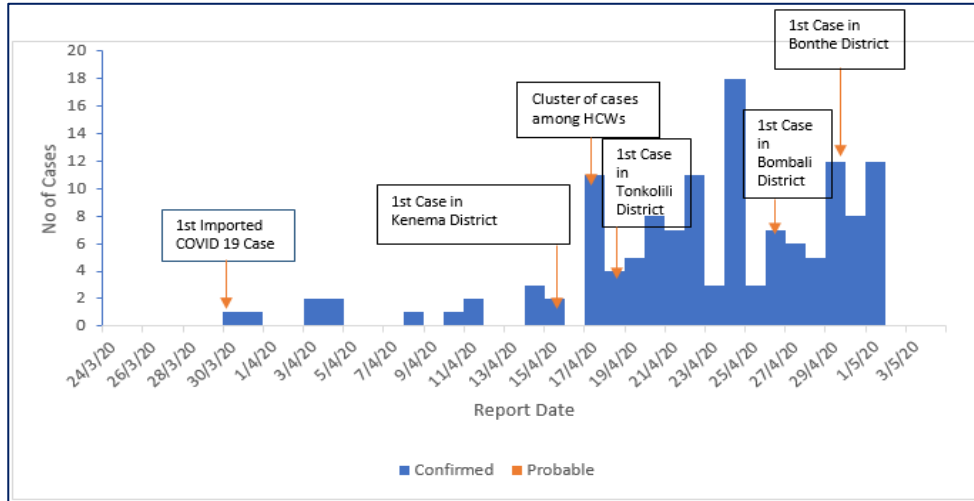


Figure 1: Reported COVID-19 cases in Sierra Leone as at 1st May, 2020

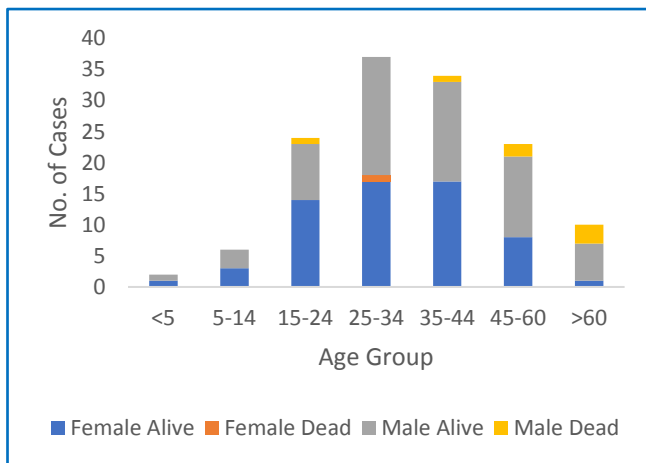


Figure 2: Age-Sex Distribution and Outcome of COVID-19 Cases

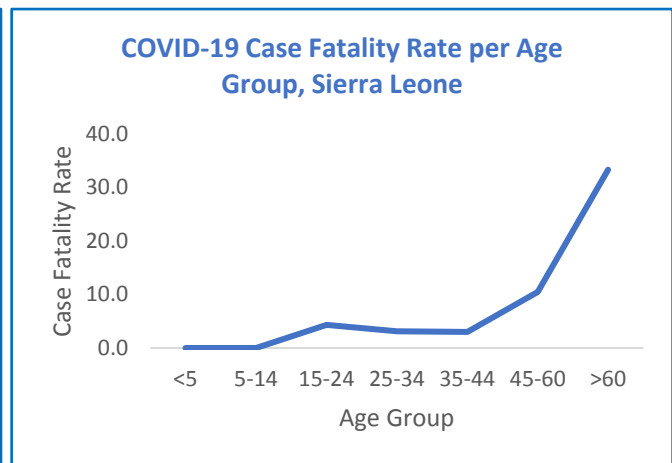


Figure 3: Age-Specific Case Fatality Rates

- Median Age of cases is 34.5 years (Range 2 months -76 years)
- Ninety-five (69.8%) cases are aged 15-44 years
- Highest mortality is in persons aged > 60 years (CFR=33.3%)

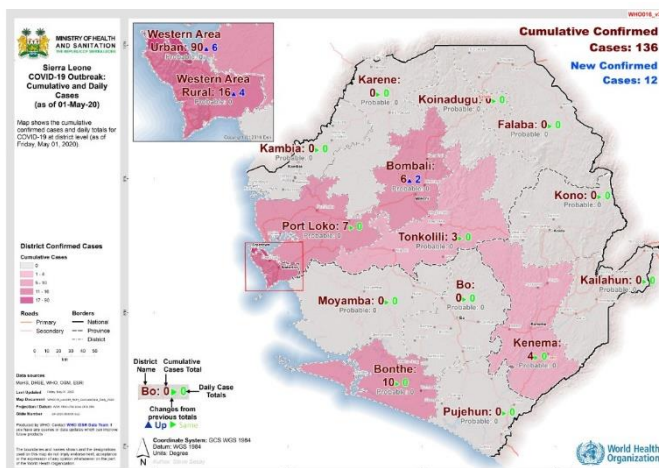


Figure 4: Geographic Distribution of COVID-19 Cases, Sierra Leone

- Seven out of 16 districts have reported COVID-19 Cases
- Highest incidence* is in Western Area Urban- 7.8 / 100,000 population
- National incidence is 1.8 / 100,000

*Incidence based on confirmed cases. Low proportion of the population has been tested for COVID-19. Incidence is likely an underestimate

Technical Areas	Variable	No
Contact Tracing	Current no of high risk contacts on follow up	1285
	No. of contacts monitored in the last 24 hours	1244 (96.8%)
Quarantine	Total No. Currently under quarantine	1182
	Self-Quarantine	570 (48.2%)
	Institutional Quarantine	612(51.8%)
Laboratory Testing	Laboratory tests done in last 24 hours	79
	Cumulative number of tests	1,935
	No of positive tests (% positivity rate)	136 (7%)
Event Based Surveillance (last 24 hrs)	Total Alerts Received through 117 System	103
	No. of COVID related alerts	13
	No. of COVID related alerts investigated	13
Critical Care Patients	No of patients on a ventilator	0

PUBLIC HEALTH ACTION / RESPONSE INTERVENTIONS

COORDINATION & LOGISTICS

- PHNEOC continues to operate at Incident level 3 with regular coordination meetings held
- Donations from WHO comprising of laboratory supplies and personal protective equipment handed over to the MoHS

SURVEILLANCE

- Nationwide two-day contact-tracing training has completed in all districts
- Assessment of district level preparedness to respond to COVID-19 has identified gaps in case investigation and coordination

HAZARD CONTAINMENT (GOVERNMENT RESTRICTIONS)

- Nationwide three-day lockdown starts on Sunday 3rd May till Tuesday 5th May, 2020
- Ban on mass gatherings, closure of learning institutions and travel restrictions remain in effect

IPC and CASE MANAGEMENT

- Current COVID-19 designated bed capacity is 162 beds, out of which 107 (66%) are occupied
- Lack of COVID-19 treatment and isolation centres in Bonthe District leading to delay in transfer of patients to treatment centre

RISK COMMUNICATION, COMMUNITY ENGAGEMENT & SOCIAL MOBILISATION

- Welfare of persons under quarantine who are fasting should be considered when distributing food

RECOMMENDATIONS

- Establish more isolation and treatment centres nationwide.
- Reduce time taken to transfer COVID-19 cases from community to treatment centres
- Facilitate the operationalization of the district response structures.

This Situation Report was developed jointly by:

**Government of Sierra Leone &
World Health Organization, Sierra Leone**

For any comments or inquiries contact:

eocnsr2020@gmail.com