

Corona Virus Disease (COVID-19) Situational Report

Report No.044 Date of Issue: 13th May, 2020, 11.am GMT

- As at 13th May 2020, there were **387** confirmed COVID-19 cases, **21 deaths** and **97 recoveries** in Sierra Leone
- Forty-nine** COVID-19 cases, **25 recoveries** and **one death** were reported in the last 24 hours
- In the last 24 hours, **196** new COVID-19 tests were conducted in four laboratories. Positivity rate was **25%**.
- Kailahun district** reported COVID-19 cases for the first time
- Forty-eight** (12.4%) COVID-19 cases are among health workers
- Case Fatality Rate (CFR) is **5.4%** *
- CFR: only confirmed COVID-19 cases are included in calculation of CFR*

New	Confirmed	49
	Recoveries	25
	Deaths	1
Cumulative	Confirmed	387
	Recoveries	97
	Deaths	21
*Case Fatality Rate (%)		5.4%

HIGHLIGHTS

Summary of COVID-19 Cases in Sierra Leone as at 13 th May, 2020							Recoveries
District	Confirmed Cases		Probable Cases		Deaths		
	New Confirmed Cases	Cumulative Confirmed Cases	New Probable cases	Cumulative Probable Cases	New Deaths	Cumulative Deaths	
Western Area Urban	46	290	0	0	1	18	70
Western Area Rural	0	37	0	0	0	0	12
Port Loko	0	8	0	0	0	0	11
Kenema	0	10	0	0	0	2	3
Tonkolili	0	4	0	0	0	0	1
Bombali	1	9	0	0	0	0	0
Bonthe	0	12	0	0	0	0	0
Bo	0	11	0	0	0	1	0
Koinadugu	0	2	0	0	0	0	0
Falaba	0	2	0	0	0	0	0
Kailahun	2	2	0	0	0	0	0
Total	49	387	0	0	1	21	97

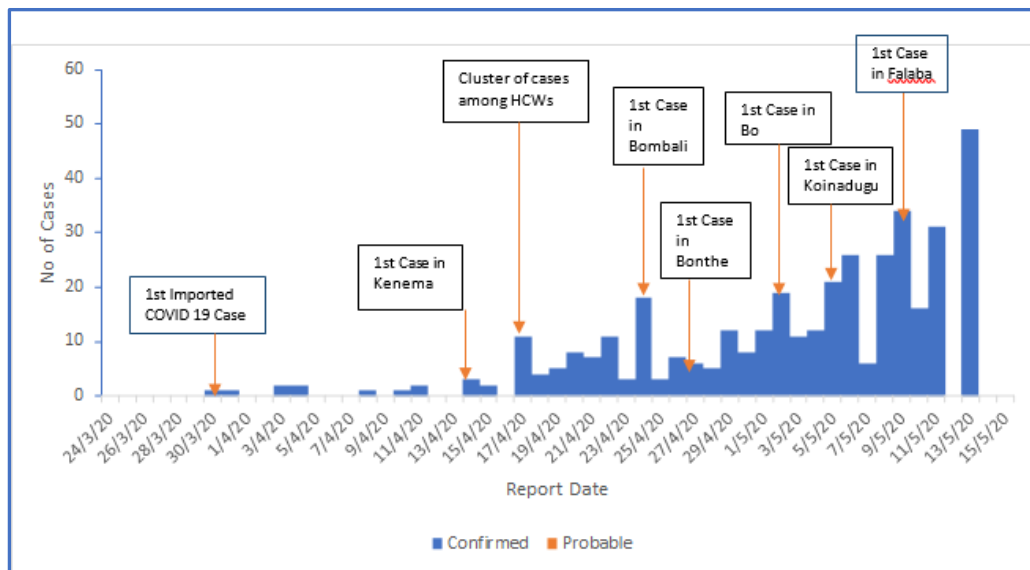


Figure 1: Reported COVID-19 cases in Sierra Leone as at 13th May, 2020

- This is the seventh week of the COVID-19 outbreak in Sierra Leone
- There is an exponential rise in the number of confirmed COVID-19 cases
- One hundred and sixty-two cases have been reported in the last 7 days
- Western Area Urban is the epicentre of the outbreak, with 46 (93.9%) of new cases reported from this district

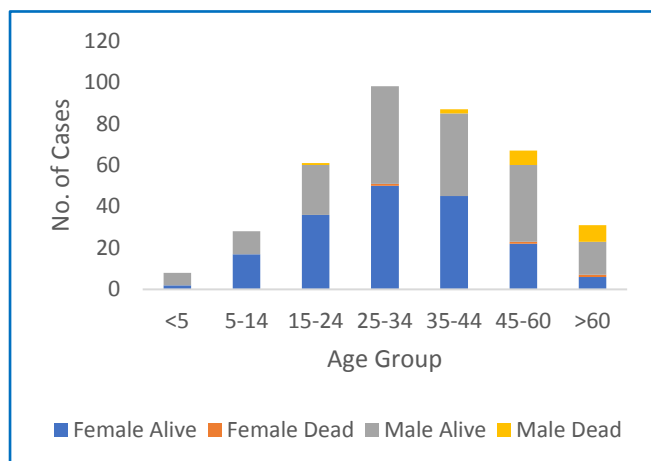


Figure 2: Age-Sex Distribution and Outcome of COVID-19 Cases

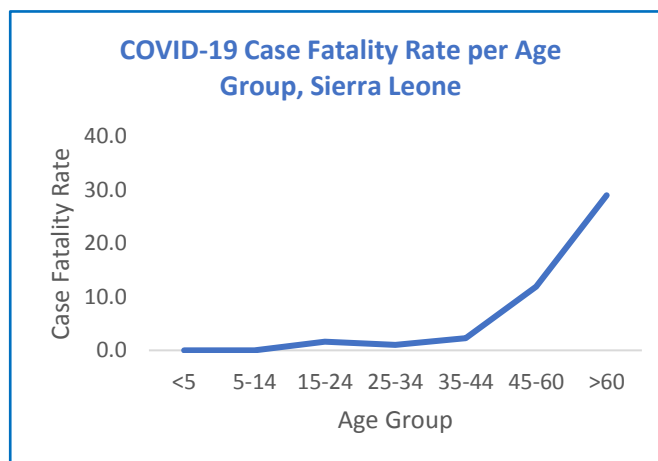


Figure 3: Age-Specific Case Fatality Rates

- **Median Age** of cases is **33 years** (Range 2 months -76 years)
- One hundred and ninety-seven (**50.9%**) are **male**
- Two hundred and eighty-two (**72.7%**) cases are **<45 years**
- Eighteen (**85.7%**) out of 21 COVID-related deaths are among males
- Case fatality rate increases with age and peaks among cases aged **> 60 years (CFR= 29%)**

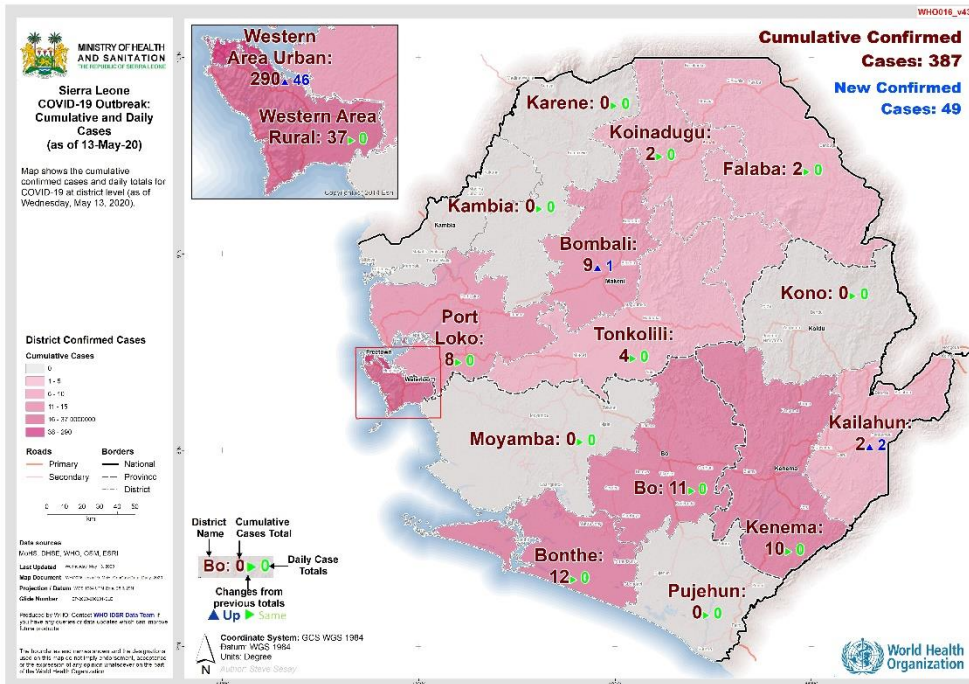


Figure 4: Geographical Distribution of COVID-19 Cases as at 13th May, 2020

- **Eleven** districts have reported COVID-19 Cases
- **Kailahun District** has reported COVID-19 cases for the first time
- Highest incidence* is in Western Area Urban- **24.2/ 100,000** population
- National incidence is **5 /100,000 population**
- There's an overall increase in the positivity of samples tested for COVID-19.
 - A quarter of the samples tested in the last 24 hours were positive.

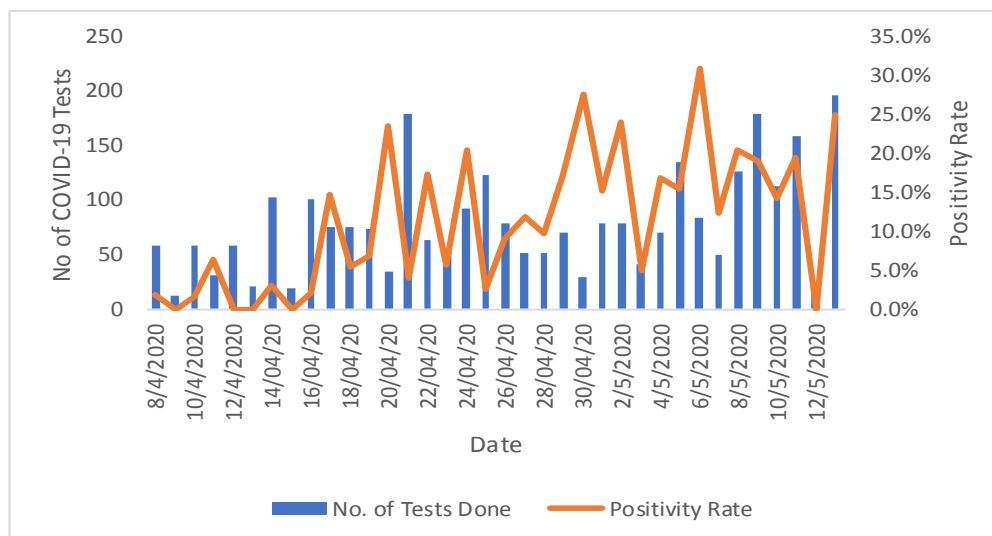


Figure 5: Number of Samples Tested for COVID-19 and Positivity Rate in Sierra Leone



Government of
Sierra Leone

Sierra Leone Ministry of Health and Sanitation



Government of
Sierra Leone

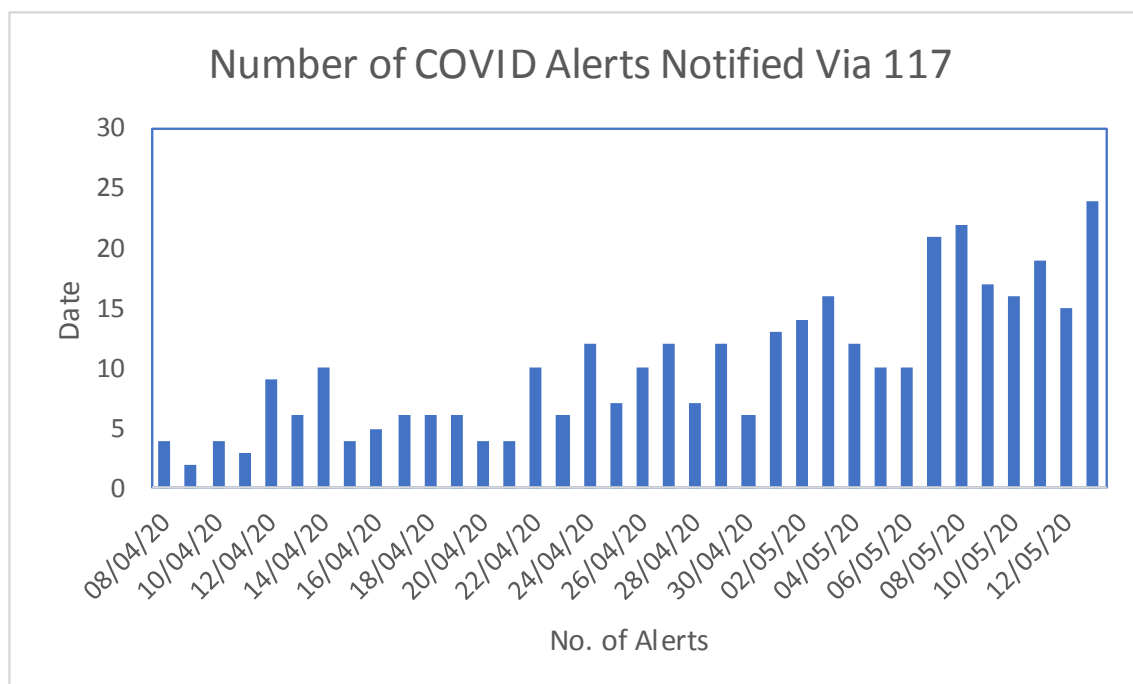


Figure 6: COVID-19 Related Alerts Received through the 117 Hotline

Technical Areas	Variable	No
Contact Tracing	Current no of high risk contacts on follow up	1759
	No. of contacts monitored in the last 24 hours	1759 (100%)
Quarantine	Total No. Currently under quarantine	2239
	Self-Quarantine	1500 (67%)
	Institutional Quarantine	739 (33%)
Laboratory Testing	Laboratory tests done in last 24 hours	196
	Cumulative number of tests	3248
	No of positive tests (% positivity rate)	387 (11.9%)
Event Based Surveillance (last 24 hrs)	Total Alerts Received through 117 System	156
	No. of COVID related alerts	24
	No. of COVID related alerts investigated	24
Critical Care Patients	No of patients on a ventilator	0

This Situation Report was developed by:

Ministry of Health and Sanitation, Sierra Leone

For any comments or inquiries contact:

eocnsr2020@gmail.com