

Corona Virus Disease (COVID-19) Situational Report

Report No.042 Date of Issue: 11th May, 2020, 11.am GMT

- As at 11th May 2020, there were **338** confirmed COVID-19 cases, **19 deaths** and **72 recoveries** in Sierra Leone
- Thirty-one new** confirmed COVID-19 cases, **five recoveries and one death** were reported in the last 24 hours
- In the last 24 hours, 159 samples were tested for COVID-19 in three laboratories. Positivity rate is **19.5%**.
- Case Fatality Rate (CFR) is **5.6% ***

CFR: only confirmed COVID-19 cases are included in calculation of CFR

New	Confirmed	31
	Recoveries	5
	Deaths	1
Cumulative	Confirmed	338
	Recoveries	72
	Deaths	19
*Case Fatality Rate (%)		5.6%

HIGHLIGHTS

Summary of COVID-19 Cases in Sierra Leone as at 11 th May, 2020							Recoveries
District	Confirmed Cases		Probable Cases		Deaths		
	New Confirmed Cases	Cumulative Confirmed Cases	New Probable cases	Cumulative Probable Cases	New Deaths	Cumulative Deaths	
Western Area Urban	24	244	0	0	0	16	47
Western Area Rural	2	37	0	0	0	0	12
Port Loko	0	8	0	0	0	0	9
Kenema	0	10	0	0	0	2	3
Tonkolili	0	4	0	0	0	0	1
Bombali	0	8	0	0	0	0	0
Bonthe	0	12	0	0	0	0	0
Bo	5	11	0	0	0	1	0
Koinadugu	0	2	0	0	0	0	0
Falaba	0	2	0	0	0	0	0
Total	31	338	0	0	0	19	72

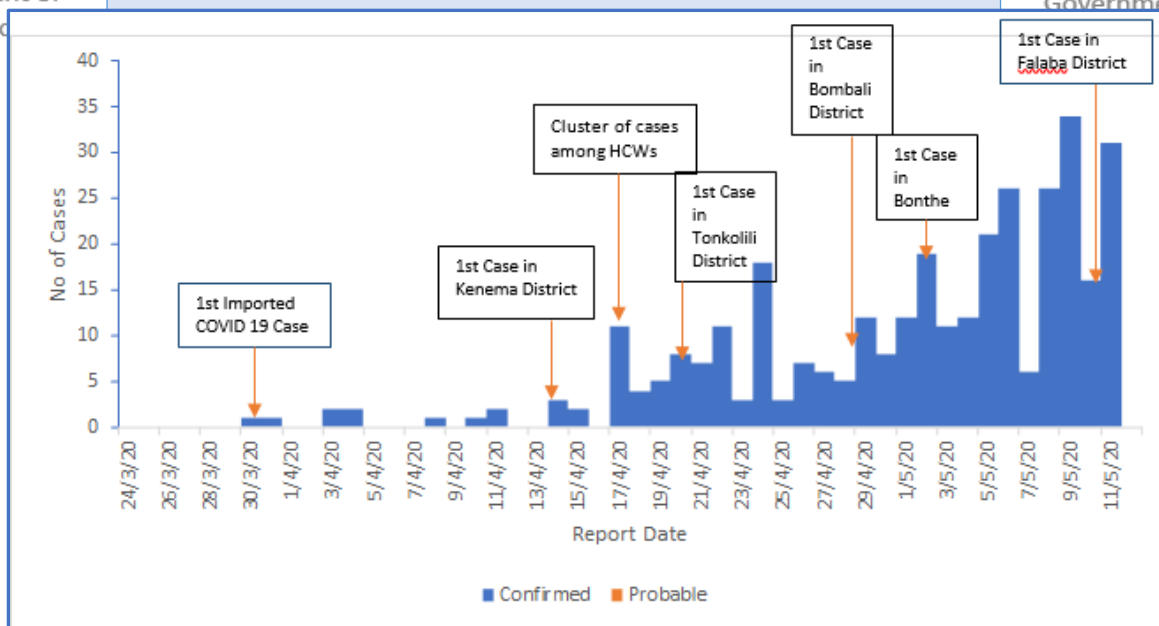


Figure 1: Reported COVID-19 cases in Sierra Leone as at 11th May, 2020

- It is six weeks since the first COVID-19 case was confirmed in Sierra Leone
- There is an exponential rise in the number of confirmed COVID-19 cases.
- One hundred and sixty cases have been reported in the last 7 days
- Western Area Urban district remains the epi-centre of the outbreak
 - Twenty-four (77%) out of 31 cases reported in the last 24 hours are from Western Area Urban

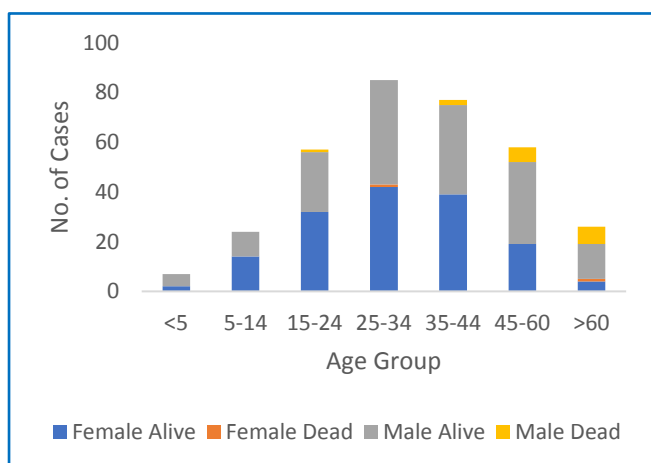


Figure 2: Age-Sex Distribution and Outcome of COVID-19 Cases

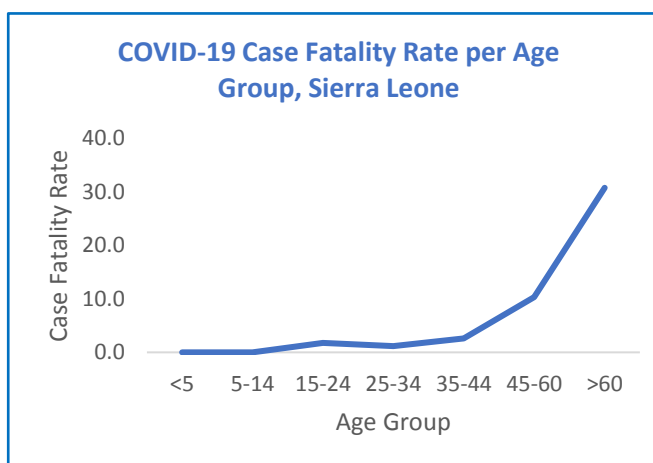


Figure 3: Age-Specific Case Fatality Rates

- **Median Age** of cases is **33 years** (Range 2 months -76 years)
- One hundred and seventy-eight (**52.8%**) are **male**
- Two hundred and fifty (**74%**) cases are **<45 years**
- Case fatality rate increases with age and peaks among cases aged **> 60 years (CFR= 30.8%)**



Government of Sierra Leone

Sierra Leone Ministry of Health and Sanitation



Government of Sierra Leone

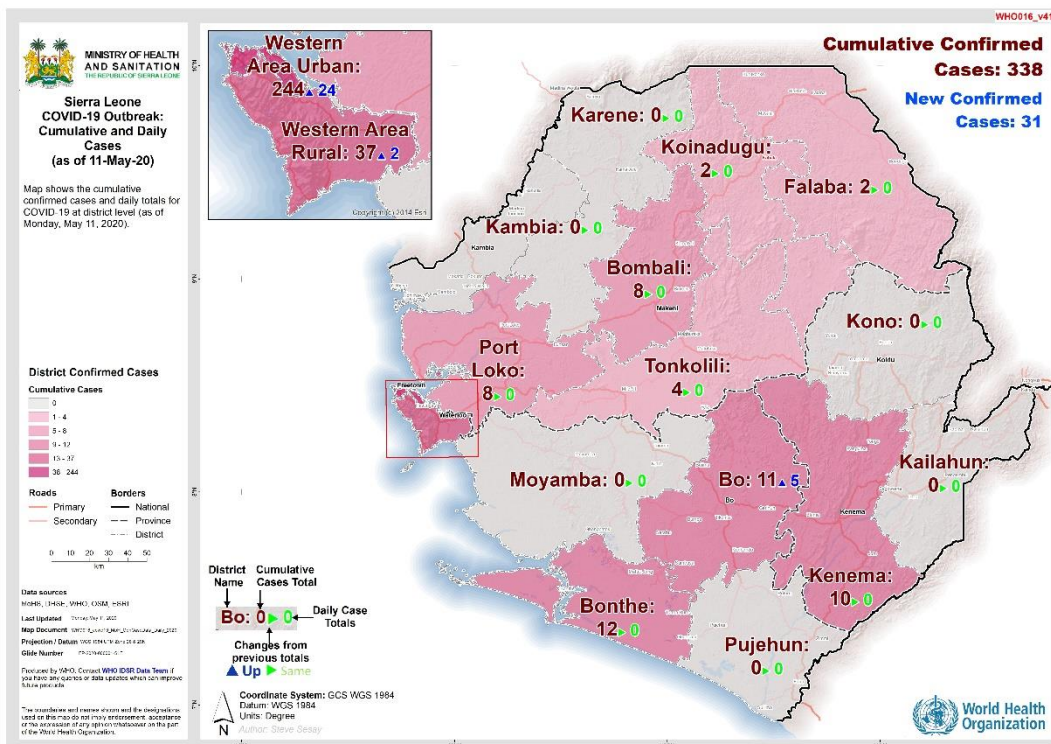


Figure 4: Geographical Distribution of COVID-19 Cases as at 11th May, 2020

- Ten districts have reported COVID-19 Cases
 - Highest incidence* is in Western Area Urban- 20.3/ 100,000 population
 - National incidence is 4.4 /100,000
 - There is an increase in both the number samples tested for COVID-19 and the positivity rate, over time
- *Incidence based on confirmed cases. Low proportion of the population has been tested for COVID-19. Incidence is likely an underestimate.

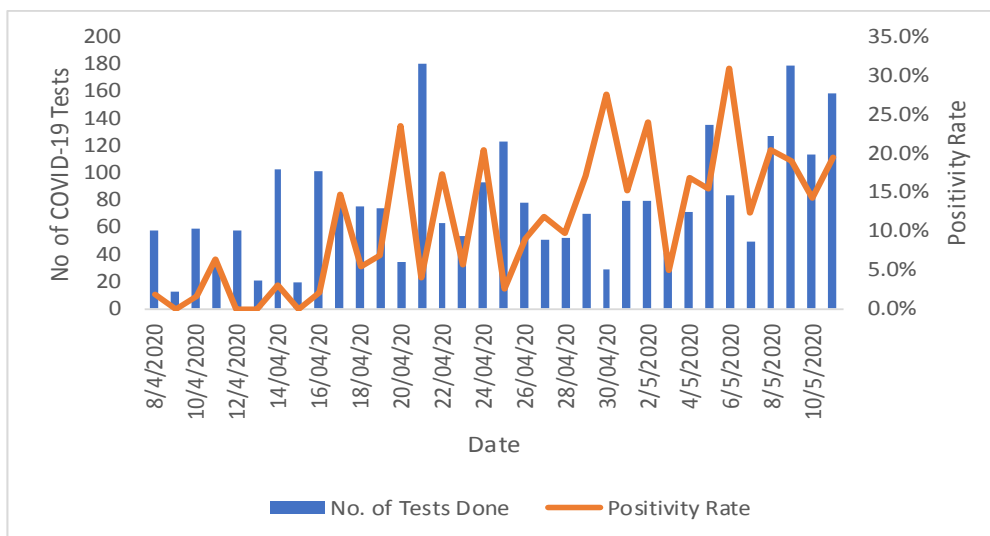


Figure 5: Number of Samples Tested for COVID-19 and Positivity Rate in Sierra Leone

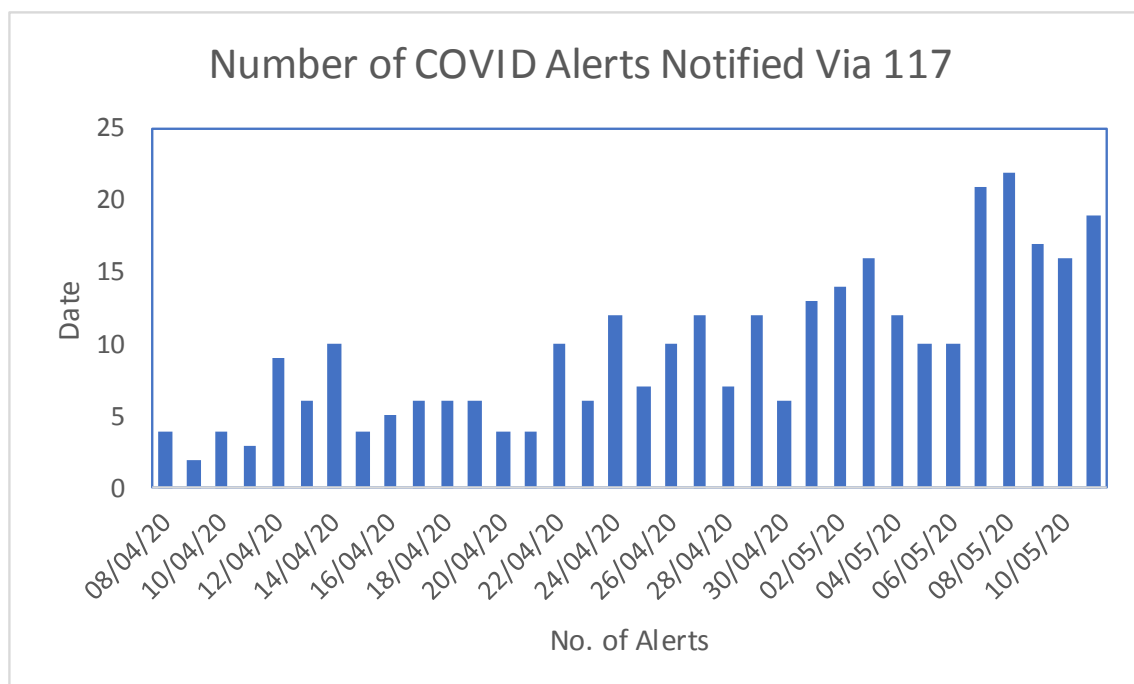


Figure 6: COVID-19 Related Alerts Received through the 117 Hotline

Technical Areas	Variable	No
Contact Tracing	Current no of high risk contacts on follow up	1614
	No. of contacts monitored in the last 24 hours	1614 (100%)
Quarantine	Total No. Currently under quarantine	2067
	Self-Quarantine	1354 (65.5%)
	Institutional Quarantine	713 (34.5%)
Laboratory Testing	Laboratory tests done in last 24 hours	159
	Cumulative number of tests	3034
	No of positive tests (% positivity rate)	338 (11.1%)
Event Based Surveillance (last 24 hrs)	Total Alerts Received through 117 System	162
	No. of COVID related alerts	19
	No. of COVID related alerts investigated	19
Critical Care Patients	No of patients on a ventilator	0

This Situation Report was developed by:

Ministry of Health and Sanitation, Sierra Leone

For any comments or inquiries contact:

eocnsr2020@gmail.com