

Corona Virus Disease (COVID-19) Situational Report

Report No.035 Date of Issue: 4th May, 2020, 11.am GMT

- As at 4th May 2020, there were **178** confirmed COVID-19 cases, **nine deaths** and **37 recoveries** in Sierra Leone
- Twelve new** confirmed COVID-19 cases and **one** death were reported in the last 24 hours
- Eight out of sixteen districts are now affected.
- Case Fatality Rate (CFR) is **5% ***
- A three-day nationwide lockdown starting 3rd May 2020, inter-district travel restrictions and curfew remain in place

*CFR: only confirmed COVID-19 cases are included in calculation of CFR

New	Confirmed	12
	Recoveries	16
	Deaths	1
Cumulative	Confirmed	178
	Recoveries	37
	Deaths	9
*Case Fatality Rate (%)		5%

HIGHLIGHTS

District	Confirmed Cases		Probable Cases		Deaths	
	New Confirmed Cases	Cumulative Confirmed Cases	New Probable cases	Cumulative Probable Cases	New Deaths	Cumulative Deaths
Western Area Urban	12	122	0	0	0	7
Western Area Rural	0	22	0	0	0	0
Port Loko	0	7	0	0	0	0
Kenema	0	6	0	0	0	1
Tonkolili	0	3	0	0	0	0
Bombali	0	7	0	0	0	0
Bonthe	0	10	0	0	0	0
Bo	0	1	0	0	1	1
Total	12	178	0	0	1	9

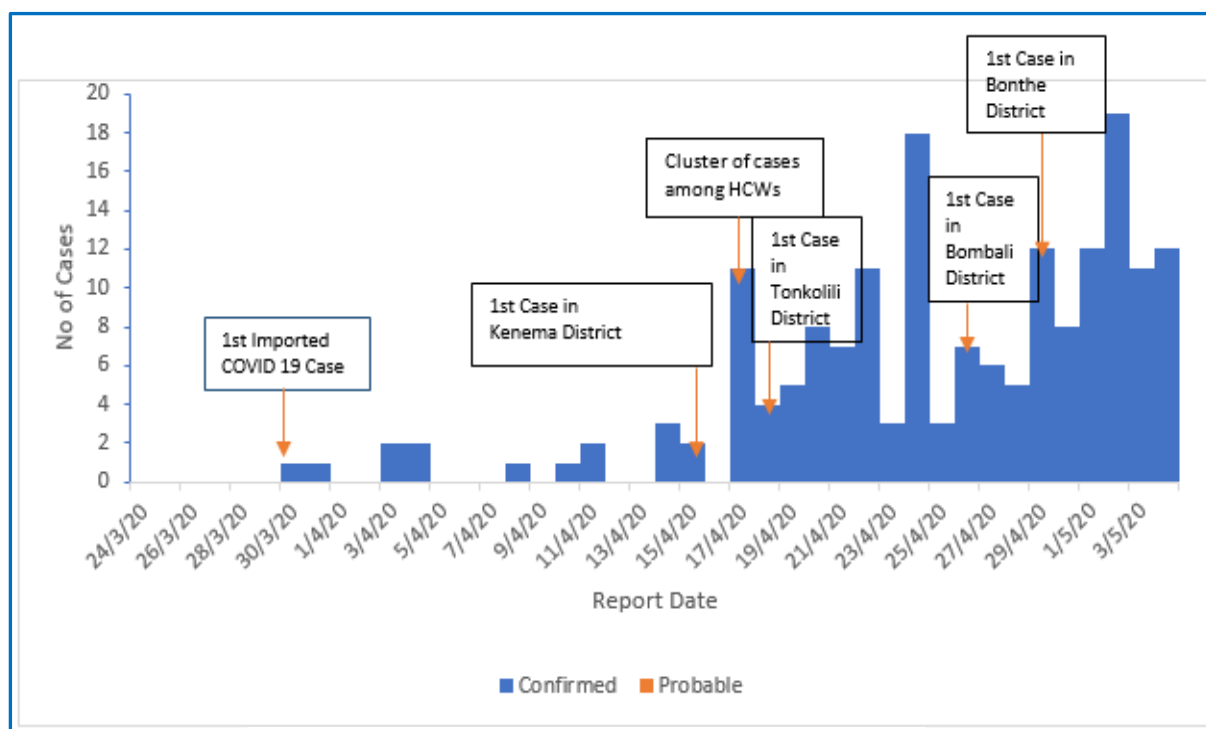


Figure 1: Reported COVID-19 cases in Sierra Leone as at 4th May, 2020

- Since the first case of COVID-19 was confirmed on 30th March, 2020, the magnitude of the outbreak has increased and the outbreak has spread to **eight** out of sixteen **districts**
- Seventy-nine cases have been reported in the last 7 days

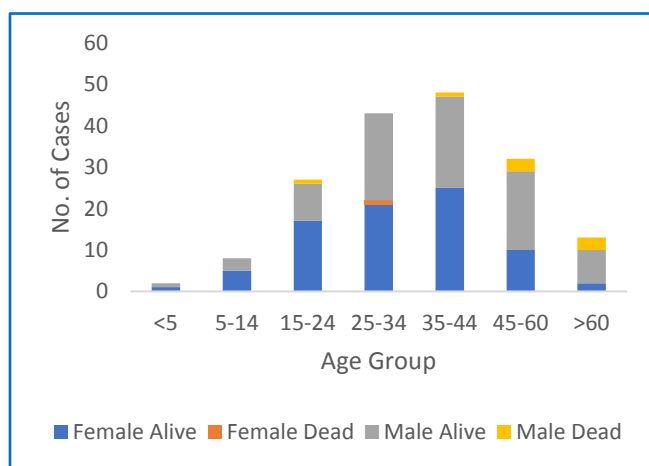


Figure 2: Age-Sex Distribution and Outcome of COVID-19 Cases

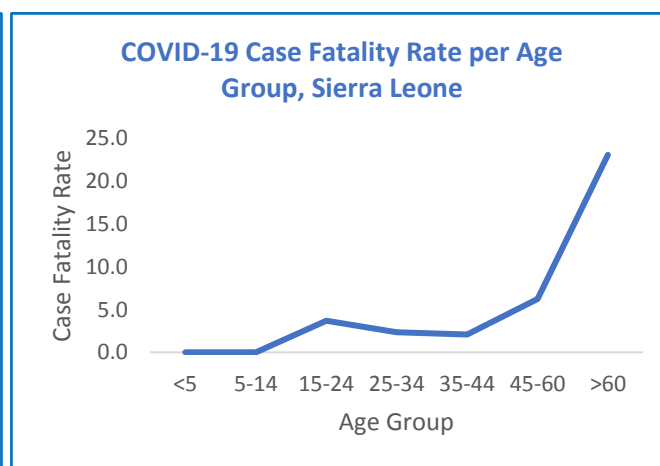


Figure 3: Age-Specific Case Fatality Rates

- Median Age of cases is 35 years (Range 2 months -76 years)
- Ninety-Six (53.9%) are male
- One hundred and eighteen (66.3%) cases are aged 15-44 years
- Total deaths are nine including 8 males and 1 female
- Case fatality rate increases with age and is highest (23.1%) among cases aged >60 years



Government of
Sierra Leone

Sierra Leone Ministry of Health and Sanitation



Government of
Sierra Leone

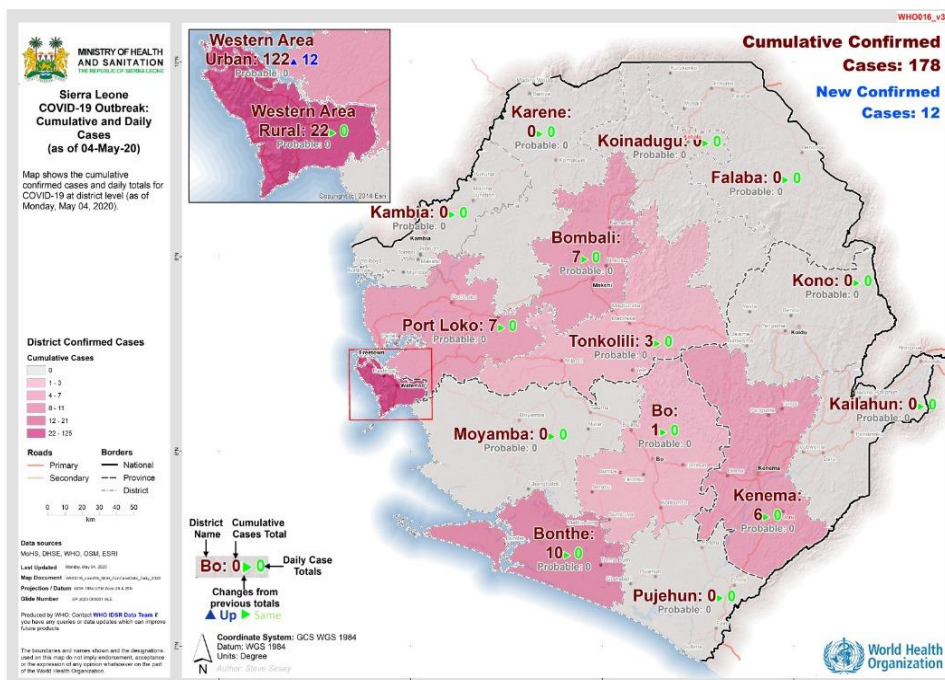


Figure 4: Geographical Distribution of COVID-19 Cases as at 4th May, 2020

- Half (8 out of 16) of the districts have reported COVID-19 Cases
- Highest incidence* is in Western Area Urban- 10.1 / 100,000 population
- National incidence is 2.3 / 100,000

*Incidence based on confirmed cases. Low proportion of the population has been tested for COVID-19. Incidence is likely an underestimate

Technical Areas	Variable	No
Contact Tracing	Current no of high risk contacts on follow up	1310
	No. of contacts monitored in the last 24 hours	1301 (99.3%)
Quarantine	Total No. Currently under quarantine	1385
	Self-Quarantine	760 (54.9%)
	Institutional Quarantine	625 (45.1%)
Laboratory Testing	Laboratory tests done in last 24 hours	71
	Cumulative number of tests	2188
	No of positive tests (% positivity rate)	178 (8.1%)
Event Based Surveillance (last 24 hrs)	Total Alerts Received through 117 System	172
	No. of COVID related alerts	16
	No. of COVID related alerts investigated	16
Critical Care Patients	No of patients on a ventilator	0

This Situation Report was developed
by:

Ministry of Health and Sanitation, Sierra Leone

For any comments or inquiries contact:

eocnsr2020@gmail.com