

Corona Virus Disease (COVID-19) Situational Report

Report No.033 Date of Issue: 2nd May, 2020, 6pm GMT

<ul style="list-style-type: none"> As at 2nd May 2020, there were 155 confirmed COVID-19 cases, eight deaths and 21 recoveries in Sierra Leone Nineteen new confirmed COVID-19 cases were reported in the last 24 hours Case Fatality Rate (CFR) is 5.2% * A three-day nationwide lockdown starts on 3rd -5th May, 2020. Inter-district travel restrictions and curfew also remain in place <p><i>*CFR: only confirmed COVID-19 cases are included in calculation of CFR</i></p>	New	Confirmed	19
		Recoveries	0
		Deaths	0
	Cumulative	Confirmed	155
		Recoveries	21
		Deaths	8
	*Case Fatality Rate (%)		5.2%

HIGHLIGHTS

Summary of COVID-19 Cases in Sierra Leone as at 2nd May, 2020

District	Confirmed Cases		Probable Cases		Deaths		Recovered Cases
	New Confirmed Cases	Cumulative Confirmed Cases	New Probable cases	Cumulative Probable Cases	New Deaths	Cumulative Deaths	
Western Area Urban	11	102	0	0	0	7	14
Western Area Rural	7	22	0	0	0	0	2
Port Loko	0	7	0	0	0	0	4
Kenema	1	5	0	0	0	1	1
Tonkolili	0	3	0	0	0	0	0
Bombali	0	6	0	0	0	0	0
Bonthe	0	10	0	0	0	0	0
Total	19	155	0	0	0	8	21

- Since the first case of COVID-19 was reported on 30th March, 2020, the magnitude of the outbreak has increased and the outbreak has spread to seven out of sixteen districts
- Cases comprise mostly clusters linked to confirmed cases.
- Sporadic cases have been identified among patients with severe pneumonia and health care workers
- So far, 32 (20.6%) of the cases have occurred among health care workers

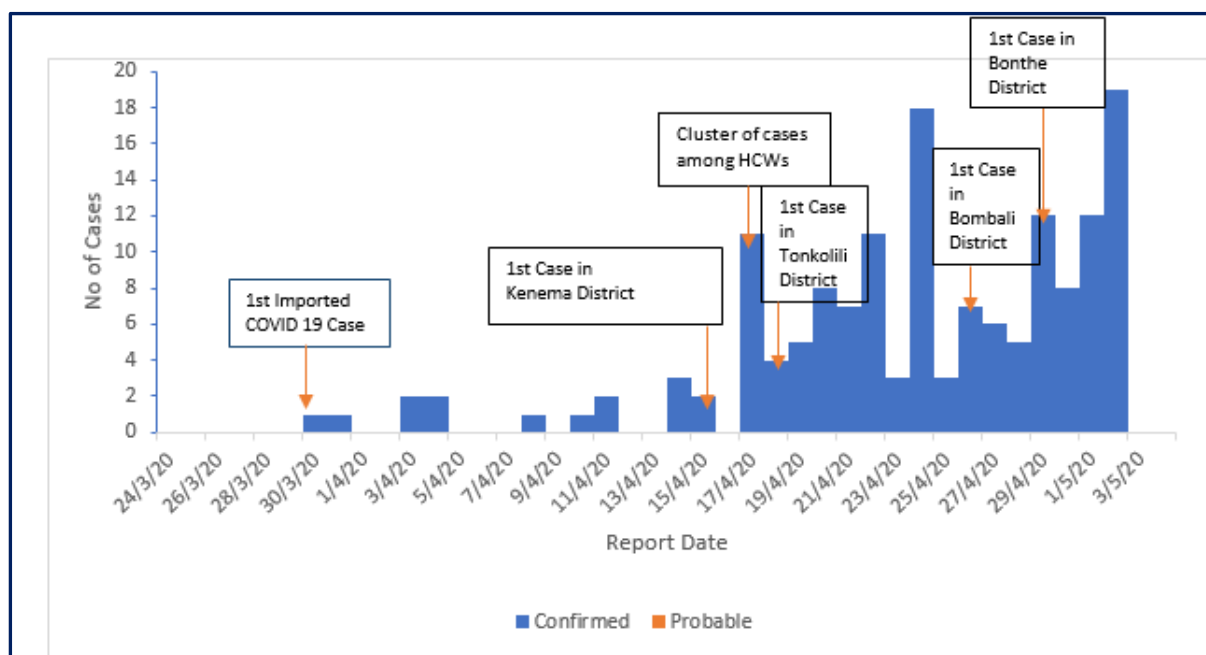


Figure 1: Reported COVID-19 cases in Sierra Leone as at 2nd May, 2020

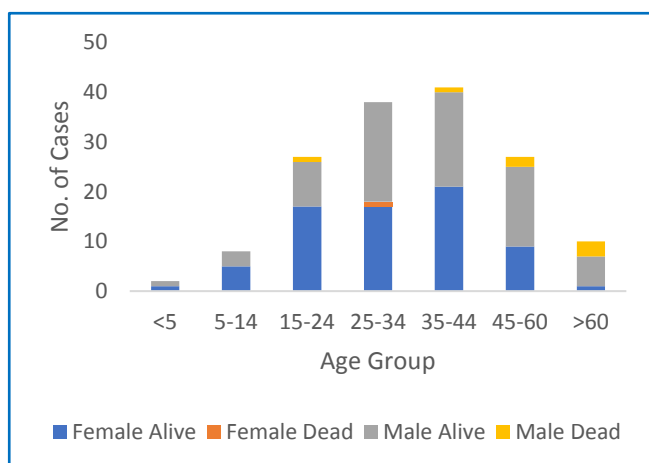


Figure 2: Age-Sex Distribution and Outcome of COVID-19 Cases

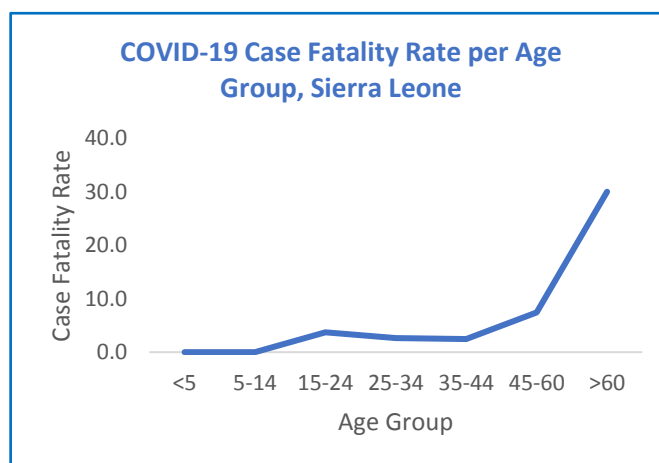


Figure 3: Age-Specific Case Fatality Rates

- Median Age of cases is 35 years (Range 2 months -76 years)
- Eighty-three (53.5%) are male
- One hundred and six (68.3%) cases are aged 15-44 years
- Total deaths are eight including 7 males and 1 female
- All deaths have occurred among persons with underlying medical conditions including, diabetes, renal disease, hypertension and sickle cell anaemia.
- Case fatality rate increases with age and is highest (30%) among cases aged >60 years

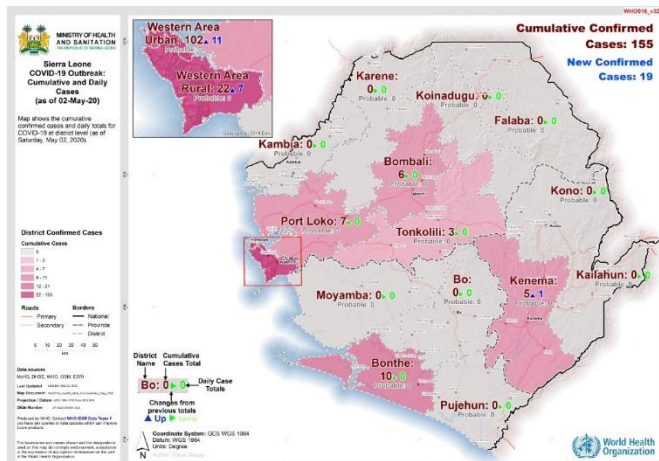


Government of
Sierra Leone

Sierra Leone Ministry of Health and Sanitation



World Health
Organization



- Seven out of 16 districts have reported COVID-19 Cases
 - Highest incidence* is in Western Area Urban- **8.4 / 100,000** population
 - National incidence is **2 /100,000**
- *Incidence based on confirmed cases. Low proportion of the population has been tested for COVID-19. Incidence is likely an underestimate*

Confirmed COVID-19 Cases among Health Workers in Sierra Leone

Variable		Frequency
Cadre	Medical Doctor	2
	Nurse	13
	Laboratory Technician	1
	Nutritionist	1
	Pharmacist	1
	Medical Student	1
	Non Clinical Staff	4
	Unspecified	9
Work Place	COVID-19 Treatment Center	2
	Non-COVID designated Health Facility	30

Symptomatic
Yes 9 (28.1%)

Technical Areas	Variable	No
Contact Tracing	Current no of high risk contacts on follow up	1316
	No. of contacts monitored in the last 24 hours	1302 (98.9%)
Quarantine	Total No. Currently under quarantine	1182
	Self-Quarantine	570 (48.2%)
Laboratory Testing	Institutional Quarantine	612 (51.8%)
	Laboratory tests done in last 24 hours	79
	Cumulative number of tests	1,935
Event Based Surveillance (last 24 hrs)	No of positive tests (% positivity rate)	136 (7%)
	Total Alerts Received through 117 System	91
	No. of COVID related alerts	7
Critical Care Patients	No. of COVID related alerts investigated	7
	No of patients on a ventilator	0

This Situation Report was developed jointly by:

Government of Sierra Leone & World Health Organization, Sierra Leone

For any comments or inquiries contact:

eocnsr2020@gmail.com