

Corona Virus Disease (COVID-19) Situational Report

Report No.031 Date of Issue: 30th April, 2020, 6pm GMT

<ul style="list-style-type: none"> As at 30th April 2020, there were 124 confirmed COVID-19 cases, seven deaths and 22 recoveries in Sierra Leone Eight new confirmed COVID-19 cases, two deaths and eight recoveries were reported in the last 24 hours Case Fatality Rate (CFR) is 5.6% * Six of the new cases were reported in Bonthe district Six out of seven COVID-related deaths were in persons with underlying medical conditions <p><i>*CFR: only confirmed COVID-19 cases are included in calculation of CFR</i></p>	New	Confirmed	8
		Recoveries	8
		Deaths	2
	Cumulative	Confirmed	124
		Recoveries	21
		Deaths	7
	*Case Fatality Rate (%)		5.6%

HIGHLIGHTS

Summary of COVID-19 Cases in Sierra Leone as at 30th April, 2020

District	Confirmed Cases		Probable Cases		Deaths		Recovered [∞] Cases
	New Confirmed Cases	Cumulative Confirmed Cases	New Probable cases	Cumulative Probable Cases	New Deaths	Cumulative Deaths	
Western Area Urban	0	84	0	0	1	6	14
Western Area Rural	0	12	0	0	0	0	2
Port Loko	0	7	0	0	0	0	5
Kenema	1	4	0	0	1	1	1
Tonkolili	1	3	0	0	0	0	0
Bombali	0	4	0	0	0	0	0
Bonthe	6	10	0	0	0	0	0
Total	8	124	0	0	2	7	22

- Fifty-nine (47.6%) of all COVID 19 cases have been reported in the last 7 days
- A cluster of 10 confirmed cases has been identified in Bonthe district. This cluster is epidemiologically linked to case number 8.
- The new cases reported in Tonkolili and Kenema district are not linked to any known transmission chains

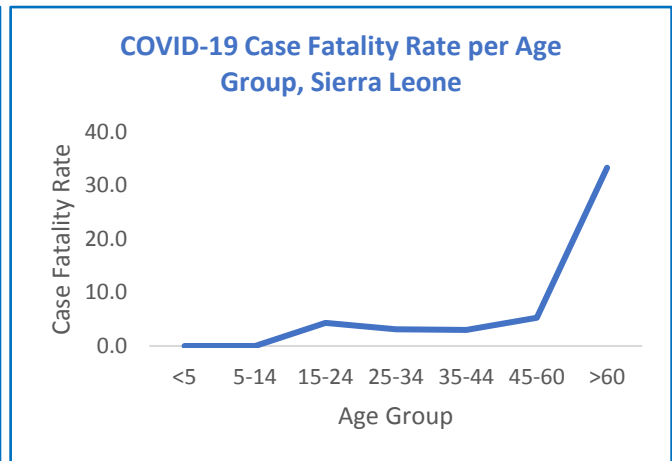
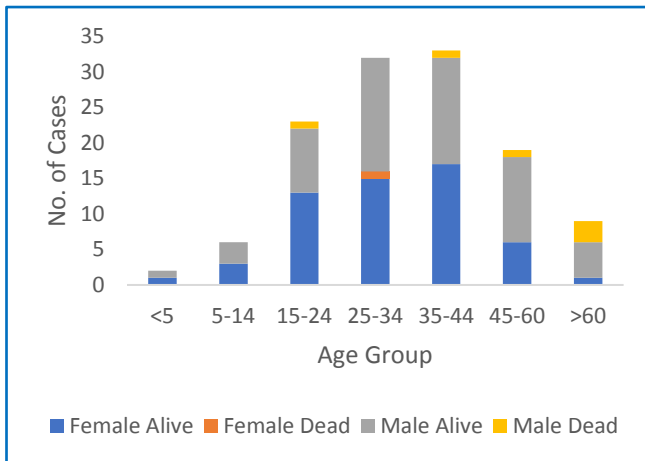
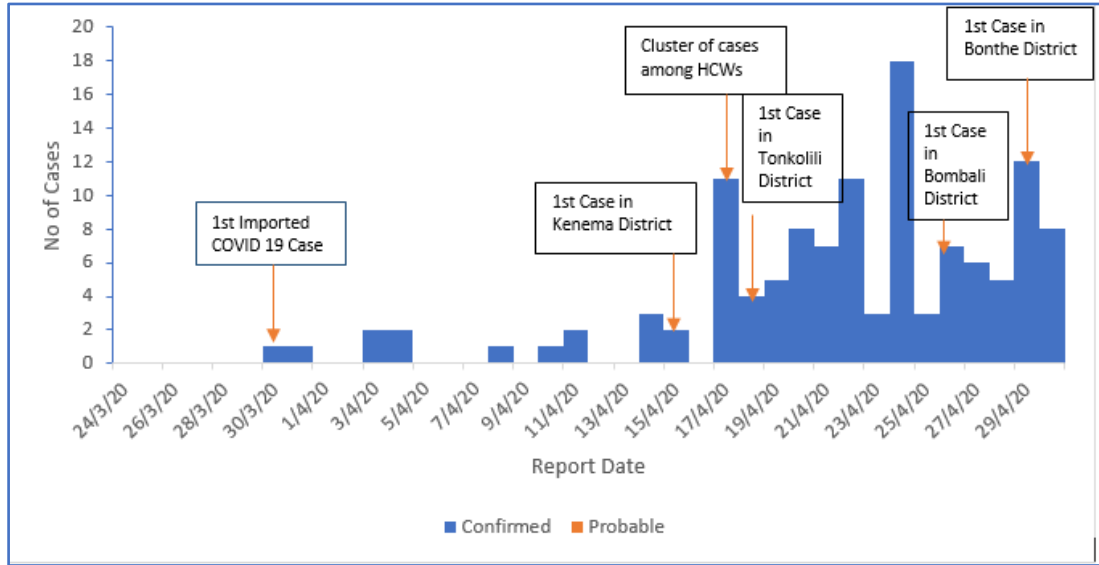


Figure 2: Age-Sex Distribution and Outcome of COVID-19 Cases

Figure 3: Age-Specific Case Fatality Rates

- Median Age of cases is 34 years (Range 2 months -76 years)
- Ninety-four (75.8%) cases are aged 15-44 years
- Highest mortality is in persons aged > 60 years (CFR=33.3%)

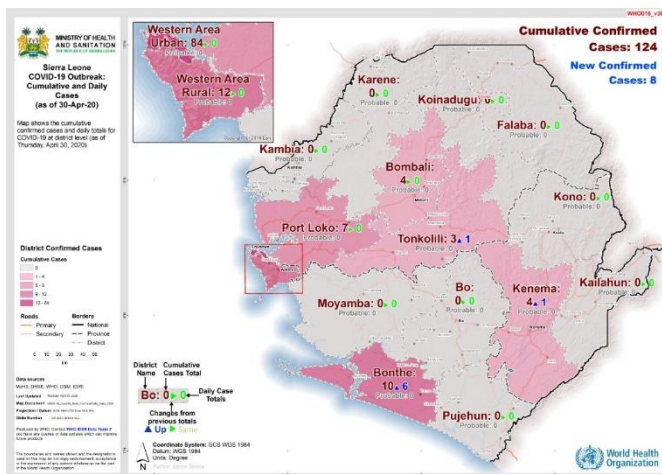


Figure 4: Geographic Distribution of COVID-19 Cases, Sierra Leone

- Seven out of 16 districts have reported COVID-19 Cases
- Highest incidence* is in Western Area Urban- 6.9/ 100,000 population
- National incidence is 1.6 /100,000

*Incidence based on confirmed cases. Low proportion of the population has been tested for COVID-19. Incidence is likely an underestimate

Technical Areas	Variable	No
Contact Tracing	Current no of high risk contacts on follow up	1209
	No. of contacts monitored in the last 24 hours	1209 (100%)
Quarantine	Total No. Currently under quarantine	1151
	Self-Quarantine	605 (52.6%)
	Institutional Quarantine	546(47.4%)
Laboratory Testing	Laboratory tests done in last 24 hours	29
	Cumulative number of tests	1,856
	No of positive tests (% positivity rate)	124 (6.6%)
Event Based Surveillance (last 24 hrs)	Total Alerts Received through 117 System	106
	No. of COVID related alerts	6
	No. of COVID related alerts investigated	6
Critical Care Patients	No of patients on a ventilator	0

PUBLIC HEALTH ACTION / RESPONSE INTERVENTIONS

COORDINATION & LOGISTICS

- PHNEOC continues to operate at Incident level 3 with regular coordination meetings held

SURVEILLANCE

- Nationwide two-day contact-tracing training has commenced
- Orientation of DHMTs on sub-national level COVID-19 response is ongoing

HAZARD CONTAINMENT (GOVERNMENT RESTRICTIONS)

- Inter-district travel restrictions in place and extended indefinitely
- Ban on mass gatherings, closure of learning institutions and travel restrictions remain in effect

IPC and CASE MANAGEMENT

- Current COVID-19 designated bed capacity is 162 beds, out of which 93 (57.4%) are occupied
- Delayed transfer of COVID-19 patients to treatment centres in Bonthe is causing concern

RISK COMMUNICATION, COMMUNITY ENGAGEMENT & SOCIAL MOBILISATION

- Welfare of persons under quarantine who are fasting should be considered when distributing food

RECOMMENDATIONS

- Establish more isolation and treatment centres nationwide.
- Reduce time taken to transfer COVID-19 cases from community to treatment centres
- Facilitate the operationalization of the district response structures.
- Identify and respond to COVID-affected persons with special needs such as pregnant women, children and people living with disabilities

This Situation Report was developed jointly by:

**Government of Sierra Leone &
World Health Organization, Sierra Leone**

For any comments or inquiries contact:

eocnsr2020@gmail.com