

Corona Virus Disease (COVID-19) Situational Report

Report No.030 Date of Issue: 29th April, 2020, 6pm GMT

- As at 29th April 2020, there were **116** confirmed COVID-19 cases, **five deaths*** and **14 recoveries** in Sierra Leone
- Twelve new** confirmed COVID-19 cases, **one death** and **two recoveries** were reported in the last 24 hours
- Case Fatality Rate (CFR) is **4.3% ****
- Four of the new cases were reported in **Bonthe** district
- Seven** out of 16 **districts** have reported COVID-19 cases

*One death was erroneously reported on 28/04/2020 in Report No. 029. The cumulative number of deaths is five.

**CFR: only confirmed COVID-19 cases are included in calculation of CFR

New	Confirmed	12
	Recoveries	2
	Deaths	1
Cumulative	Confirmed	116
	Recoveries	14
	Deaths	5
**Case Fatality Rate (%)		4.3%

HIGHLIGHTS

Summary of COVID-19 Cases in Sierra Leone as at 29th April, 2020

District	Confirmed Cases		Probable Cases		Deaths		Recovered Cases
	New Confirmed Cases	Cumulative Confirmed Cases	New Probable cases	Cumulative Probable Cases	New Deaths	Cumulative Deaths	
Western Area Urban	4	84	0	0	1	5	7
Western Area Rural	0	12	0	0	0	0	2
Port Loko	1	7	0	0	0	0	4
Kenema	0	3	0	0	0	0	1
Tonkolili	0	2	0	0	0	0	0
Bombali	3	4	0	0	0	0	0
Bonthe	4	4	0	0	0	0	0
Total	12	116	0	0	1	5	14

- Fifty-four (46.5%) of all COVID 19 cases have been reported in the last 7 days
- Eight out of twelve cases reported today are epidemiologically linked to confirmed cases
- All four new cases from Western Area Urban are not linked to confirmed cases

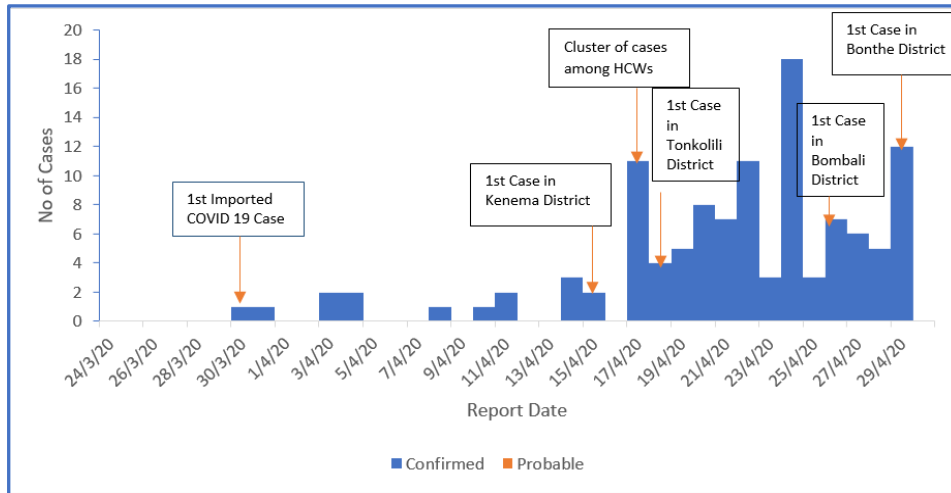
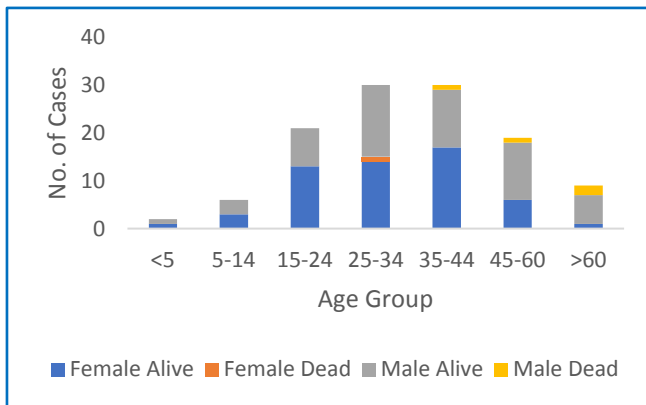


Figure 1: Reported COVID-19 cases in Sierra Leone as at 29th April, 2020



- The median age of cases is 34 years (Range 2 months -76 years).
- Eighty-one (69.8%) of cases are aged 15-44 years.
- Four out of five deaths have occurred in males aged >35 years with underlying medical conditions while one new death was reported in a pregnant woman

Figure 2: Age-Sex Distribution and Outcome of COVID-19 Cases

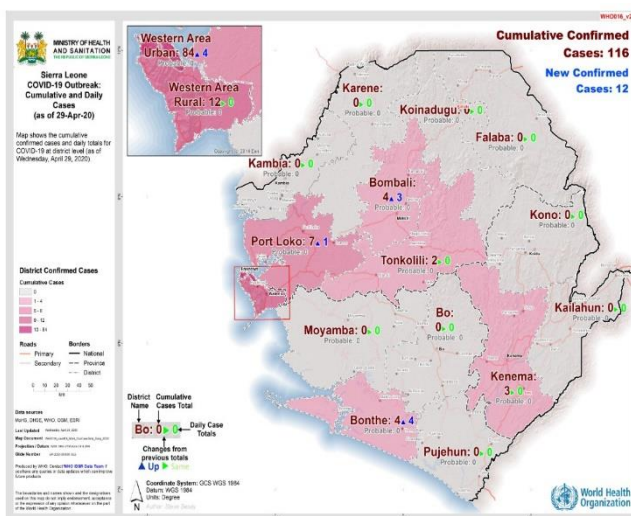


Figure 3: Geographic Distribution of COVID-19 Cases, Sierra Leone

- Seven out of 16 districts have reported COVID-19 Cases
- Highest incidence* is in Western Area Urban- **6.8/ 100,000** population
- National incidence is **1.5 /100,000**
- The newest district to report COVID-19 cases is **Bonthe District**

*Incidence based on confirmed cases. Low proportion of the population has been tested for COVID-19. Incidence is likely an underestimate

Summary of Confirmed COVID-19 Cases among Health Workers in Sierra Leone

Variable	Frequency
Cadre	
Medical Doctor	2
Nurse	11
Laboratory Technician	1
Nutritionist	1
Pharmacist	1
Medical Student	1
Non Clinical Staff	4
Unspecified	8
Total	29
Place of Work	
COVID -19 designated Facility	
Yes	2
No	27
Symptomatic	
Yes	8 (27.6%)

Technical Areas	Variable	No
Contact Tracing	Current no of high risk contacts on follow up	1220
	No. of contacts monitored in the last 24 hours	1212 (99.3%)
Quarantine	Total No. Currently under quarantine	1166
	Self-Quarantine	597 (51.2%)
	Institutional Quarantine	569 (48.8%)
Laboratory Testing	Laboratory tests done in last 24 hours	70
	Cumulative number of tests	1,827
	No of positive tests (% positivity rate)	104 (5.9%)
Event Based Surveillance (last 24 hrs)	Total Alerts Received through 117 System	96
	No. of COVID related alerts	12
	No. of COVID related alerts investigated	12
Critical Care Patients	No of patients on a ventilator	0

This Situation Report was developed jointly by:

Government of Sierra Leone & World Health Organization, Sierra Leone

For any comments or inquiries contact:

eocnsr2020@gmail.com