

## Corona Virus Disease (COVID-19) Situational Report

Report No.029 Date of Issue: 28<sup>th</sup> April, 2020, 6pm GMT

<ul style="list-style-type: none"> <li>As at <b>28<sup>th</sup> April 2020</b>, there were <b>104</b> confirmed COVID-19 cases, <b>five deaths</b> and <b>12 recoveries</b> in Sierra Leone</li> <li><b>Five new</b> confirmed COVID-19 cases, <b>one death</b> and <b>two recoveries</b> were reported in the last 24 hours</li> <li>Two of the new cases are contacts of the first case reported in Tonkolili District</li> <li>Case Fatality Rate (CFR) is <b>4.8%</b> *</li> <li>Identification of COVID-19 in <b>destitute person</b> and a <b>prisoner</b>, highlights the need for suitable containment measures in these populations</li> </ul> <p><i>*CFR: only confirmed COVID-19 cases are included in calculation of CFR</i></p>	<b>New</b>	<b>Confirmed</b>	<b>5</b>
		<b>Recoveries</b>	<b>2</b>
		<b>Deaths</b>	<b>1</b>
	<b>Cumulative</b>	<b>Confirmed</b>	<b>104</b>
		<b>Recoveries</b>	<b>12</b>
		<b>Deaths</b>	<b>5</b>
	<b>*Case Fatality Rate (%)</b>		<b>4.8%</b>

### HIGHLIGHTS

Summary of COVID-19 Cases in Sierra Leone as at 28 <sup>th</sup> April, 2020							
District	Confirmed Cases		Probable Cases		Deaths		Recovered Cases
	New Confirmed Cases	Cumulative Confirmed Cases	New Probable cases	Cumulative Probable Cases	New Deaths	Cumulative Deaths	
Western Area Urban	2	80	0	0	1	5	6
Western Area Rural	3	12	0	0	0	0	2
Port Loko	0	6	0	0	0	0	4
Kenema	0	3	0	0	0	0	0
Tonkolili	0	2	0	0	0	0	0
Bombali	0	1	0	0	0	0	0
<b>Total</b>	<b>5</b>	<b>104</b>	<b>0</b>	<b>0</b>	<b>1</b>	<b>5</b>	<b>12</b>

- Since the first COVID-19 case was reported on 30<sup>th</sup> March, 2020, there has been an increase in the number of cases reported per day as well as the geographical spread of the outbreak.
- Most cases reported over the last one week have been clusters of contacts. However, there has also been a steady increase in the number of COVID-19 cases without any links to known transmission chains.

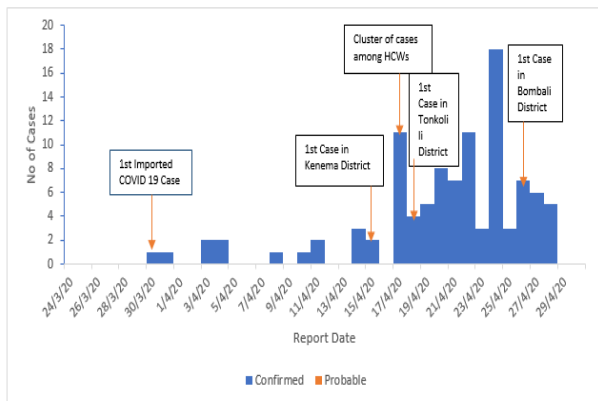


Figure 1: Reported COVID-19 cases in Sierra Leone as at 28<sup>th</sup> April, 2020

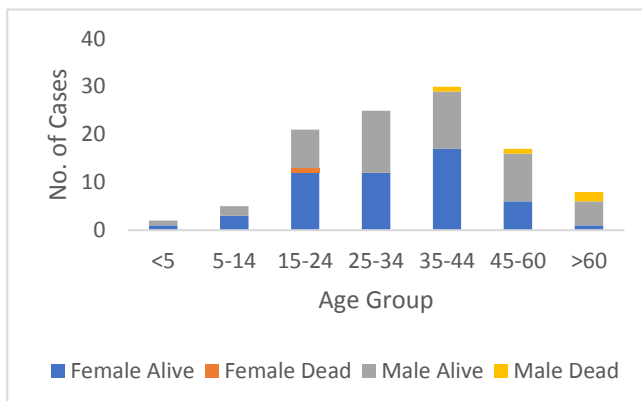


Figure 2: Age-Sex Distribution and Outcome of COVID-19 Cases

- The median age of cases is 34 years (Range 2 months -76 years).
- Seventy-six (73.1%) of cases are aged 15-44 years.
- Four out of five deaths have occurred in males aged > 35 years, and all had underlying medical conditions.

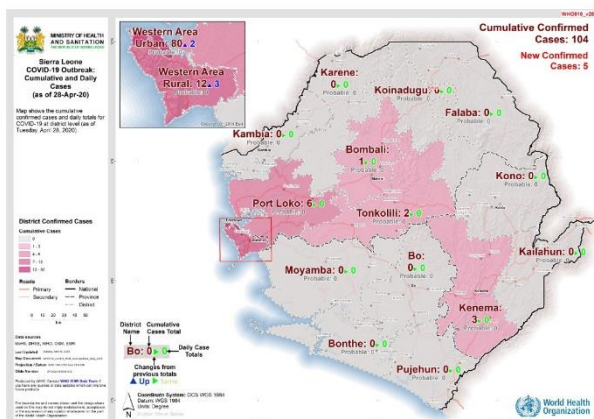


Figure 3: Geographic Distribution of COVID-19 Cases, Sierra Leone

- Six out of 16 districts have reported COVID-19 Cases
- Highest incidence\* is in Western Area Urban- **6.7/ 100,000** population
- National incidence is **1.3 /100,000**

\*Incidence based on confirmed cases. Low proportion of the population has been tested for COVID-19. Incidence is likely an underestimate

Technical Areas	Variable	No
Contact Tracing	Current no of high risk contacts on follow up	1204
	No. of contacts monitored in the last 24 hours	1204 (100%)
Quarantine	Total No. Currently under quarantine	1187
	Self-Quarantine	685 (57.7%)
	Institutional Quarantine	502 (43.3%)
Laboratory Testing	Laboratory tests done in last 24 hours	52
	Cumulative number of tests	1,757
	No of positive tests (% positivity rate)	104 (5.9%)
Event Based Surveillance (last 24 hrs)	Total Alerts Received through 117 System	92
	No. of COVID related alerts	7
	No. of COVID related alerts investigated	7

## **PUBLIC HEALTH ACTION / RESPONSE INTERVENTIONS**

### **COORDINATION & LOGISTICS**

- PHNEOC continues to operate at Incident level 3 with regular coordination meetings held

- 

### **SURVEILLANCE**

- There are increased reports of contacts escaping from quarantine homes
- One of the confirmed COVID -19 cases reported on 27<sup>th</sup> April was a prisoner who had recently escaped from a quarantine facility. The Corrections Service has been engaged to institute control measures to avoid COVID-19 transmission in the correction facility.
- Reports of 500 quarantined persons in Guinea that escaped from treatment/ quarantine facility

### **HAZARD CONTAINMENT (GOVERNMENT RESTRICTIONS)**

- Inter-district travel restrictions in place extended indefinitely
- Ban on mass gatherings, closure of learning institutions and travel restrictions remain in effect

### **IPC and CASE MANAGEMENT**

- Current COVID-19 designated bed capacity is 118 beds, out of which 79 (66.9%) are occupied
- Projection of district essential supplies needs conducted jointly by IPC and Logistics pillars
- Concerns over interrupted power supplies at one of the COVID-19 treatment centre discussed with Ministry of Energy

### **RISK COMMUNICATION, COMMUNITY ENGAGEMENT & SOCIAL MOBILISATION**

- Delay in transfer of confirmed cases from quarantine homes to treatment centre encouraging transmission
- Concerns over an increased number of homeless persons in Kissi Town

## **RECOMMENDATIONS**

- Urgently identify, quarantine and monitor persons exposed at the correctional facility
- Step up border security following reports of 500 escaped COVID-19 patients from Guinea.
- Timely dissemination of COVID-19 information; and community-led sensitization.
- Improve security in quarantine homes and facilities so as to ensure adherence to quarantine protocols
- Provide tents and rain gear for security personnel manning quarantine facilities and homes
- Enforce ban on all mass gatherings

---

*This Situation Report was developed  
jointly by:*

**Government of Sierra Leone &  
World Health Organization, Sierra Leone**

---

*For any comments or inquiries contact:*

[eocnsr2020@gmail.com](mailto:eocnsr2020@gmail.com)

---