

Corona Virus Disease (COVID-19) Situational Report

Report No.027 Date of Issue: 26th April, 2020, 6pm GMT

- As at 26th April 2020, there were **93** confirmed COVID-19 cases, **four deaths** and **10 recoveries** in Sierra Leone
- Seven new** confirmed COVID-19 cases and **one death** has been reported in the last 24 hours
- Case Fatality Rate (CFR) is 4.2% *
- Bombali District** has reported a COVID-19 case for the first time
- Six out of 16 districts are now affected

*CFR: only confirmed COVID-19 cases are included in calculation of CFR

New	Confirmed	7
	Recoveries	0
	Deaths	1
Cumulative	Confirmed	93
	Recoveries	10
	Deaths	4
Case Fatality Rate (%)		4.3%

HIGHLIGHTS

Summary of COVID-19 Cases in Sierra Leone as at 26th April, 2020

District	Confirmed Cases		Probable Cases		Deaths		Recovered Cases
	New Confirmed Cases	Cumulative Confirmed Cases	New Probable cases	Cumulative Probable Cases	New Deaths	Cumulative Deaths	
Western Area Urban	5	72	0	0	1	3	5
Western Area Rural	1	9	0	0	0	0	1
Port Loko	0	6	0	0	0	0	4
Kenema	0	3	0	0	0	0	0
Tonkolili	0	2	0	0	0	0	0
Bombali	1	1	0	0	0	0	0
Total	7	93	0	0	1	4	10

- The first COVID-19 case was reported 28 days ago on 30th March 2020
- Fifty-seven (61.3%) of cases have been reported over the past seven days
- Cases reported in Tonkolili, Kenema and Bombali are persons who recently travelled from Western Area Urban
- Seventy (75.3%) of cases have no history of recent travel to affected countries

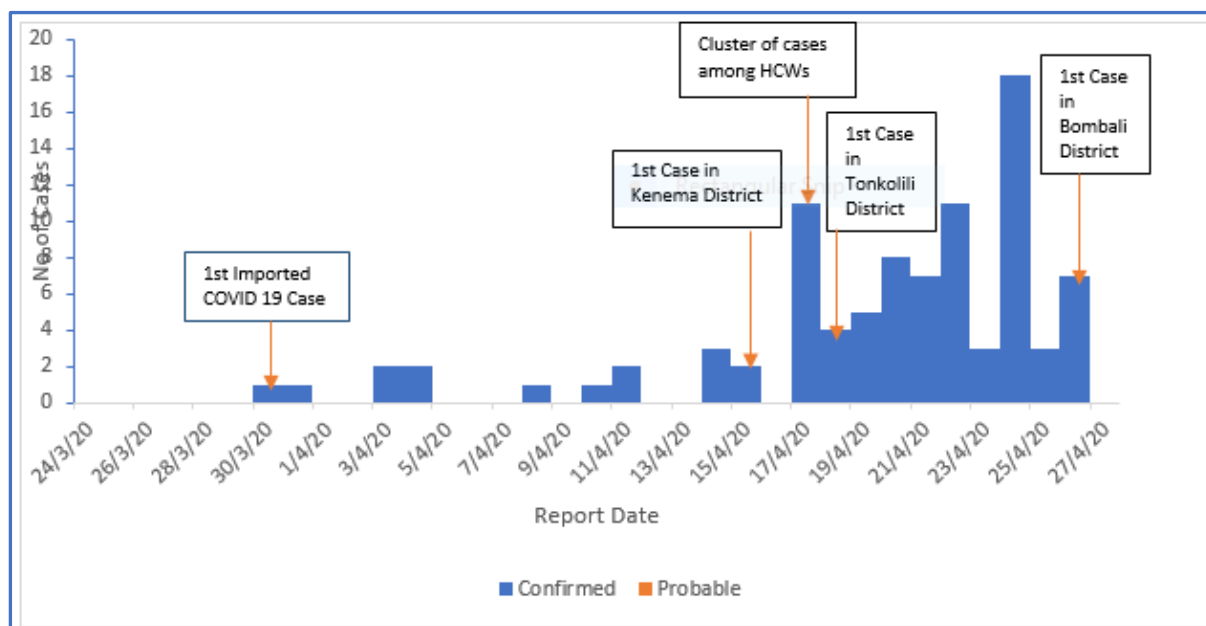


Figure 1: Reported COVID-19 cases in Sierra Leone as at 26th April, 2020

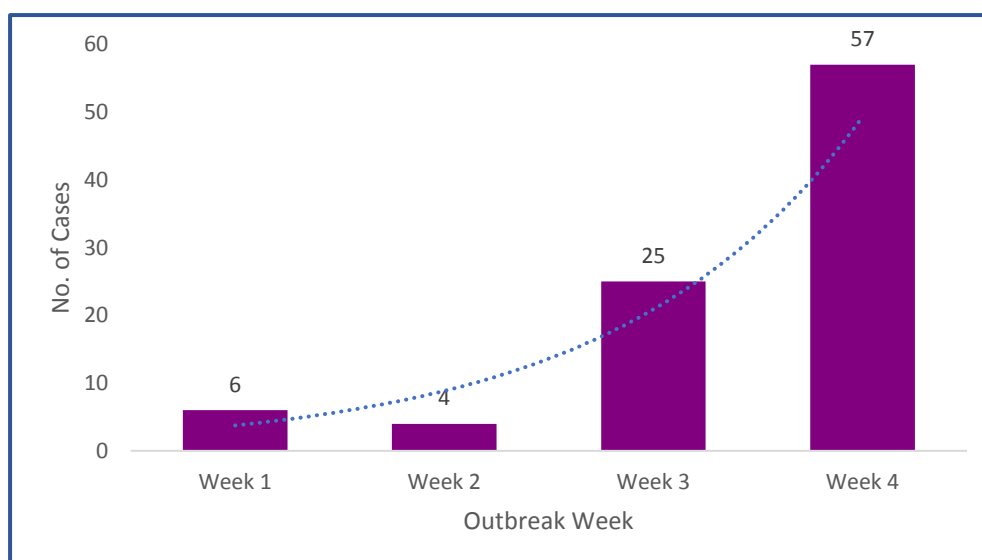
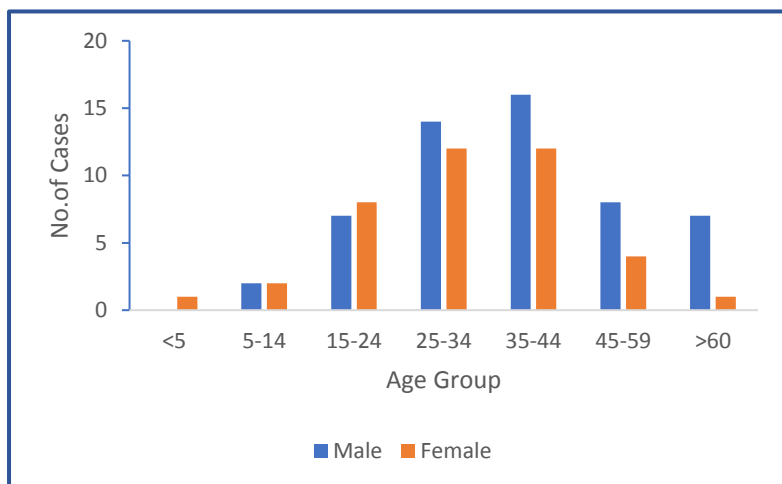
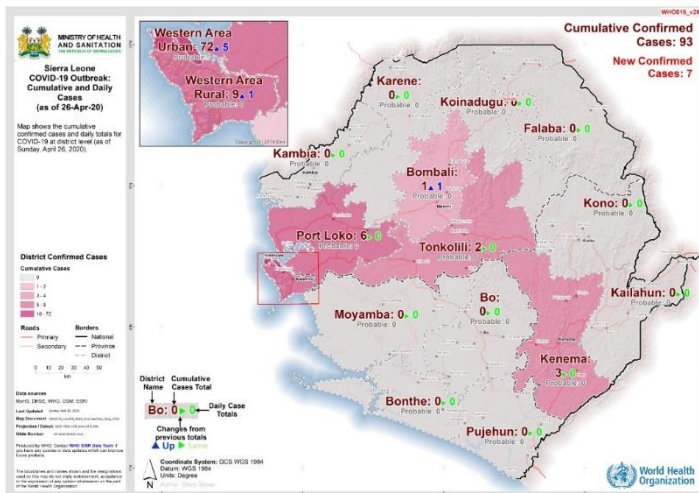


Figure 2: Reported COVID-19 cases in Sierra Leone per Week



- Fifty -four (58.1%) cases are aged **25-44** years
- Median age is 35 (Range 1-76 years)
- Male: 48 (51.6%)
- One confirmed COVID-19 case in an **infant** admitted in ODCH
- All **four** COVID-19 deaths reported to be **diabetic**; three were **hypertensive**

Figure 3: Age-Sex Distribution COVID-19 cases in Sierra Leone



- Six out of 16 districts have reported COVID-19 Cases
- Highest incidence is in Western Area Urban- **6 cases/100,000** population
- National incidence is **1 case/100,000**
- All four COVID-19 deaths have occurred in Western Area Urban

Technical Areas	Variable	No
Contact Tracing	Current no of high risk contacts on follow up	896
	No. of contacts monitored in the last 24 hours	812 (90.6%)
Quarantine	Total No. Currently under quarantine	1075
	Self-Quarantine	592 (55.1%)
	Institutional Quarantine	483 (44.9%)
Laboratory System Testing	Laboratory tests done in last 24 hours	78
	Cumulative number of tests	1,654
	No of positive tests (% positivity rate)	93 (5.6%)
Event Based Surveillance (last 24 hrs)	Total Alerts Received through 117 System	105
	No. of COVID related alerts	10
	No. of COVID related alerts investigated	10

This Situation Report was developed jointly by:

Government of Sierra Leone & World Health Organization, Sierra Leone

For any comments or inquiries contact:

ecnsr2020@gmail.com