

## Corona Virus Disease (COVID-19) Situational Report

Report No.025 Date of Issue: 24<sup>th</sup> April, 2020, 6pm GMT

- As at 24<sup>th</sup> April 2020, there were **83** confirmed COVID-19 cases, **three deaths** and **10 recoveries** in Sierra Leone
- **Nineteen new** confirmed COVID-19 cases and **one new death** have been reported in the last 24 hours
- This is the highest number of new cases reported over a 24-hour period since the beginning of the outbreak
- **Two** of the deceased cases had **underlying medical conditions**
- Ban on inter-district travel restrictions ends today

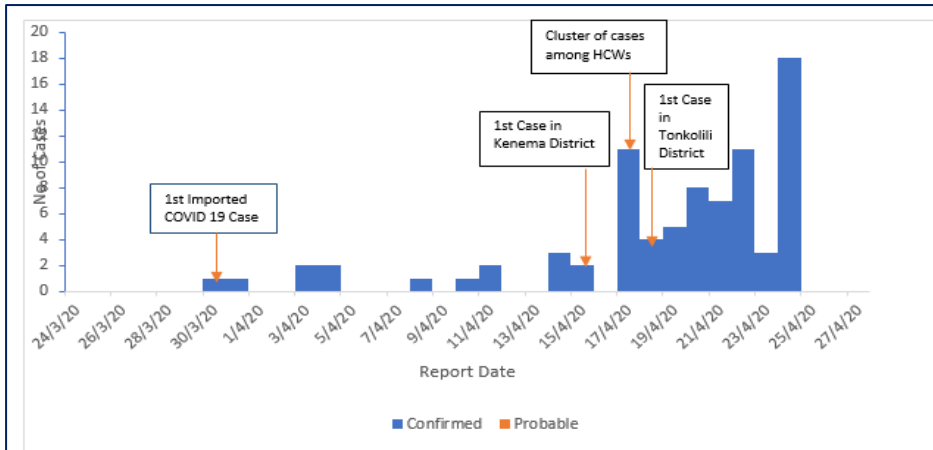
New	Confirmed	19
	Recoveries	0
	Deaths	1
Cumulative	Confirmed	83
	Recoveries	10
	Deaths	3
Case Fatality Rate (%)		3.6%

### HIGHLIGHTS

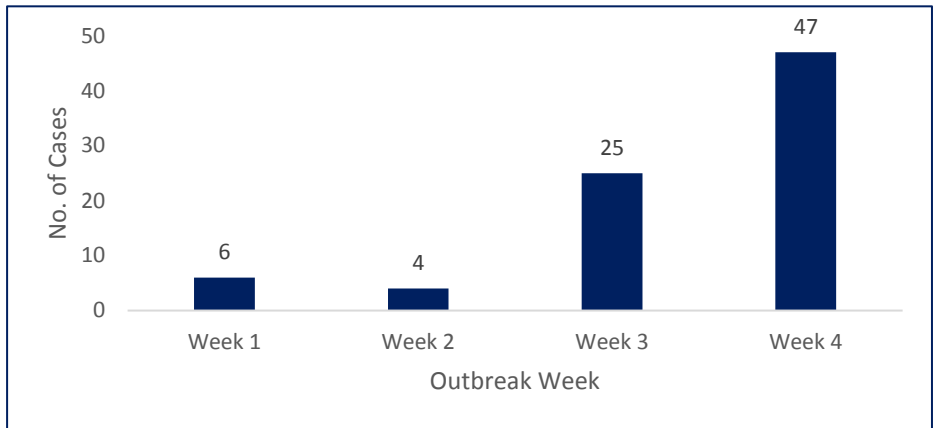
#### Summary of COVID-19 Cases in Sierra Leone as at 24<sup>th</sup> April, 2020

District	Confirmed Cases		Probable Cases		Deaths		Recovered Cases
	New Confirmed Cases	Cumulative Confirmed Cases	New Probable cases	Cumulative Probable Cases	New Deaths	Cumulative Deaths	
Western Area Urban	17	64	0	0	1	3	5
Western Area Rural	1	8	0	0	0	0	1
Port Loko	0	6	0	0	0	0	4
Kenema	0	3	0	0	0	0	0
Tonkolili	1	2	0	0	0	0	0
<b>Total</b>	<b>19</b>	<b>83</b>	<b>0</b>	<b>0</b>	<b>0</b>	<b>3</b>	<b>10</b>

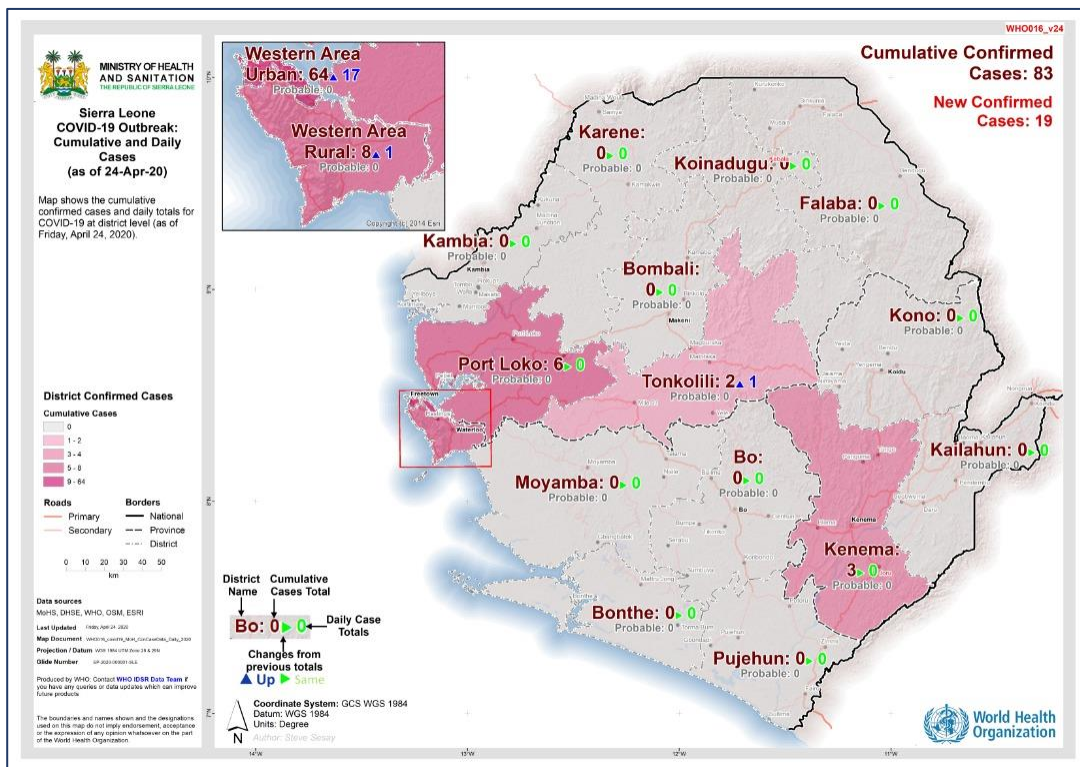
- A steady increase in the number of confirmed COVID-19 cases has been observed
- Two thirds (67.4%) of COVID-19 cases have been reported in the last 7 days
- The new cases comprise mainly clusters linked to confirmed cases
- Three deaths reported so far have occurred in non-COVID designated treatment centers



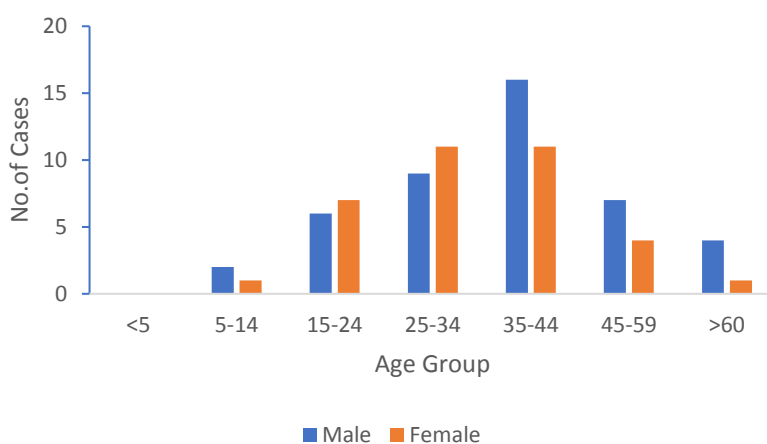
Reported COVID-19 Cases in Sierra Leone as at 24<sup>th</sup> April, 2020



Reported COVID-19 Cases by Week. Week four case count includes data for 5 days.



Age-Sex Distribution COVID-19 Cases, Sierra Leone



- Most cases are aged **25-44** years
- Median age is 36 (Range 10-36 years)
- Forty-two (**50.6%**) are **female**
- Two out of three COVID deaths occurred in persons aged **>60** years
- Both were **diabetic & hypertensive**

Technical Areas	Variable	No
<b>Contact Tracing</b>	Current no of high risk contacts on follow up	907
	No. of contacts monitored in the last 24 hours	842 (92.8%)
<b>Quarantine</b>	Total No. Currently under quarantine	889
	Self-Quarantine	417 (46.9%)
	Institutional Quarantine	472 (53.1%)
<b>Laboratory Testing</b>	Laboratory tests done in last 24 hours	93
	Cumulative number of tests	1,453
	No of positive tests (% positivity rate)	83 (5.7%)
<b>Event Based Surveillance (last 24 hrs)</b>	Total Alerts Received through 117 System	96
	No. of COVID related alerts	12
	No. of COVID related alerts investigated	12

- The number of high risk contacts currently on follow up is 907 and 842 (92.8%) were reached by contact tracers in the last 24 hours
- There is a considerable proportion (46.9%) of persons under self-quarantine
- The positivity rate of samples tested for COVID-19 is currently 5.7%
- There is increased index of suspicion among clinicians, resulting in more COVID-19 cases being detected among patients admitted in hospitals

*This Situation Report was developed jointly by:*

**Government of Sierra Leone & World Health Organization, Sierra Leone**

*For any comments or inquiries contact:*

[eocnsr2020@gmail.com](mailto:eocnsr2020@gmail.com)