

Corona Virus Disease (COVID-19) Situational Report

Report No.021 Date of Issue: 20th April, 2020, 6pm GMT

HIGHLIGHTS

- As at 20th April 2020, there were **43** confirmed and **two** probable COVID-19 cases reported in Sierra Leone
- **Eight new** confirmed COVID-19 cases have been reported in the last 24 hours
- **Seventeen** confirmed cases are among **health workers**
- **Six cases** have recovered
- This is the second week of inter-district travel restrictions
- Planning for a decentralized response at the subnational level have began

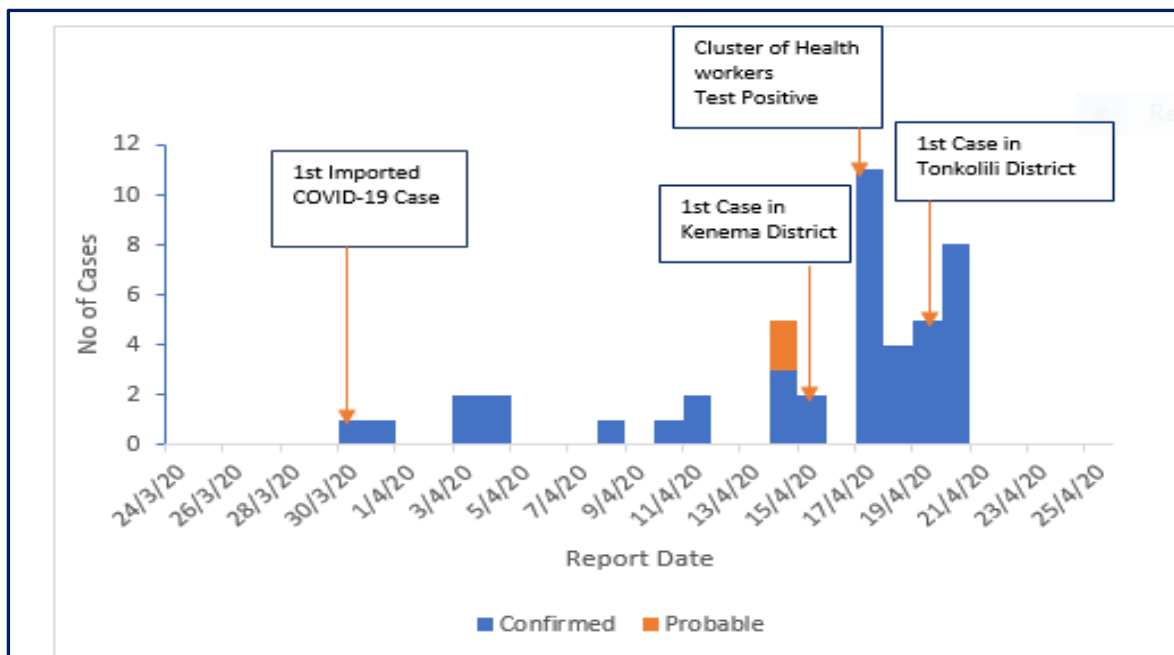
New	Confirmed	8
	Probable	0
	Recoveries	0
	Deaths	0
Cumulative	Confirmed	43
	Probable	2
	Recoveries	6
	Deaths	0

EPIDEMIOLOGY & SURVEILLANCE

Summary of COVID-19 Cases in Sierra Leone as at 20th April, 2020

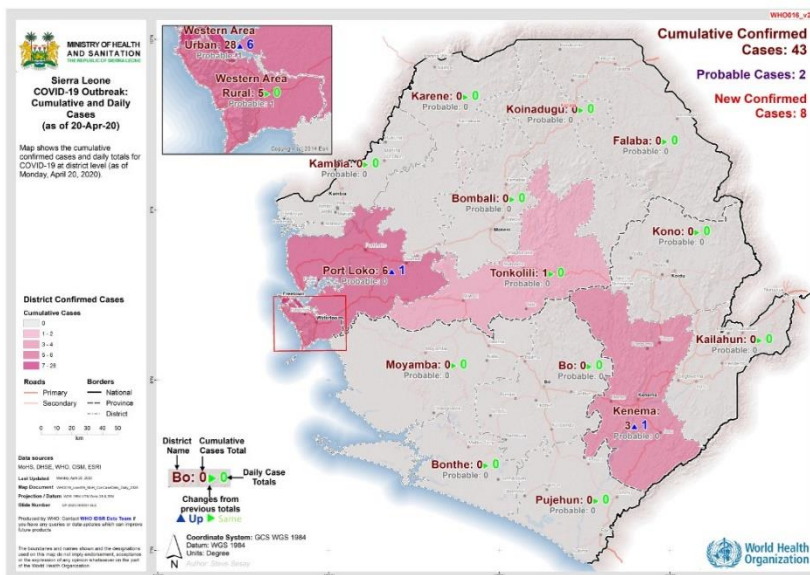
District	Confirmed Cases		Probable Cases		Deaths		Recovered Cases
	New Confirmed Cases	Cumulative Confirmed Cases	New Probable cases	Cumulative Probable Cases	New Deaths	Cumulative Deaths	
Western Area Urban	6	28	0	1	0	0	3
Western Area Rural	0	5	0	1	0	0	1
Port Loko	1	6	0	0	0	0	2
Kenema	1	3	0	0	0	0	0
Tonkolili	1	1	0	0	0	0	0
Total	8	43	0	2	0	0	6

- There has been an increase in the frequency and number of COVID-19 cases reported over the last one week.
- The highest number of cases was recorded on 17th April, 2020. A cluster of cases has been identified among health care workers, some of whom may have had contact with case # 2.
- The magnitude of the outbreak is increasing, with 62% of cumulative cases recorded over the last four days.

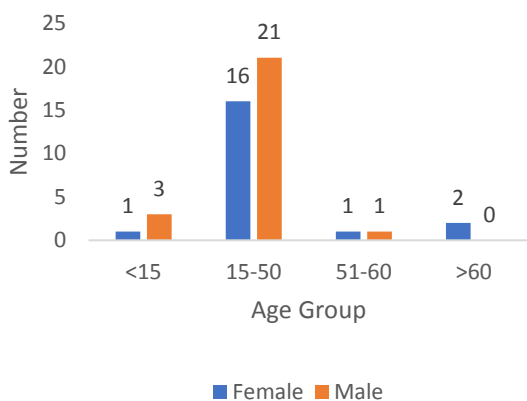


Epidemic curve of COVID-19 cases in Sierra Leone as at 20th April, 2020

- **Twenty-eight (62.2%)** of cases are from **Western Area Urban**
- First cases reported in Kenema and Tonkolili had recently travelled from Western Area Urban



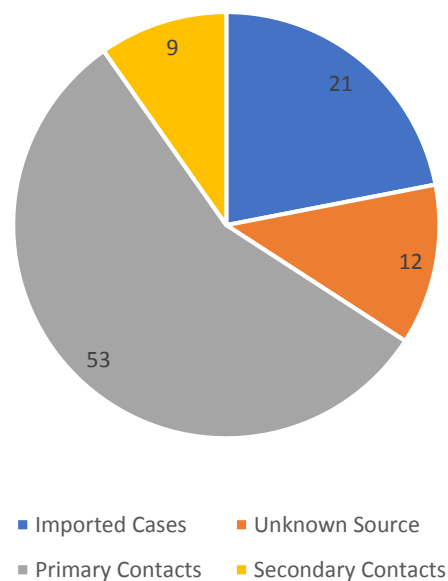
Age-Sex Distribution of COVID-19 Cases, Sierra Leone



Summary of COVID-19 Cases in Sierra Leone as at 20th April, 2020

- **Thirty (85.7%)** cases are aged **15-50** years
- Median age of the cases is **34.5** years (Range 10-66 years).
- Gender: **25 (55.5%)** male
- **Five (31.2%)** out of 16 districts have confirmed COVID-19 cases
- **Seventeen (37.7%)** of cases are among **health care workers**

- Most (**53%**) of the cases reported so far, have occurred among **primary contacts** of confirmed COVID-19 cases
- Twelve percent of the cases have not been linked to any known transmission chains
- During the first week of the outbreak, most cases occurred among travellers returning from countries with COVID-19 transmission
- 9% of cases are among persons who were indirectly exposed to cases, although the primary contacts have tested negative



Technical Areas	Variable	No
Contact Tracing	Current no of high risk contacts on follow up	811
	No. of contacts monitored in the last 24 hours	662 (81.6%)
Quarantine	Total No. Currently under quarantine	567
	Self-Quarantine	265 (46.7%)
	Institutional Quarantine	302 (53.3%)
Laboratory Testing	Laboratory tests done in last 24 hours	34
	Cumulative number of tests	1,064
	No of positive tests (% positivity rate)	43 (4 %)
Event Based Surveillance (last 24 hrs)	Total Alerts Received through 117 System	96
	No. of COVID related alerts	4
	No. of COVID related alerts investigated	4
	No. of COVID related alerts discarded	0

This Situation Report was developed jointly by:

Government of Sierra Leone & World Health Organization, Sierra Leone

For any comments or inquiries contact:

eocnsr2020@gmail.com