

## Corona Virus Disease (COVID-19) Situational Report

Report No.020 Date of Issue: 19<sup>th</sup> April, 2020, 6pm GMT

### HIGHLIGHTS

- As at 19<sup>th</sup> April 2020, there are **35** confirmed and **two** probable COVID-19 cases reported in Sierra Leone
- Five new** confirmed COVID-19 cases have been reported in the last 24 hours
- One** of the new cases is from **Tonkolili District**
- Four** of the new cases are **health workers**, possible contacts of case #2
- Six cases** have recovered and have been discharged

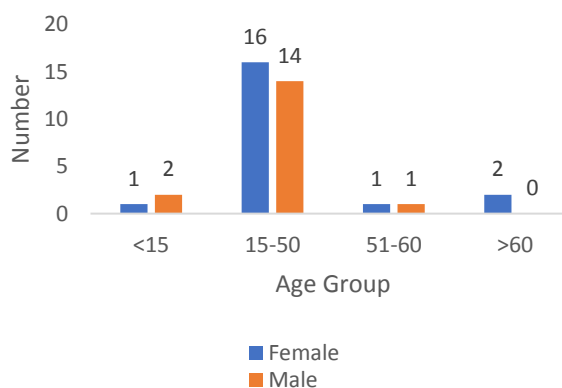
New	Confirmed	5
	Probable	0
	Deaths	0
Cumulative	Confirmed	35
	Probable	2
	Deaths	0

### EPIDEMIOLOGY & SURVEILLANCE

#### Summary of COVID-19 Cases in Sierra Leone as at 19<sup>th</sup> April, 2020

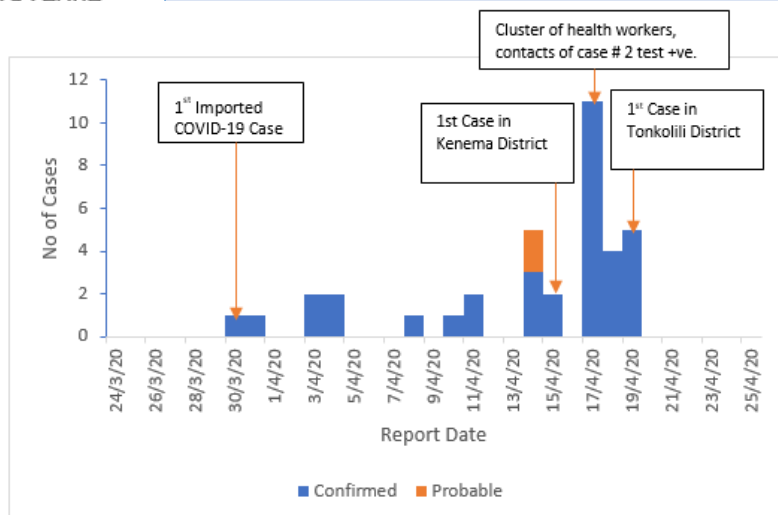
- Thirty** (85.7 %) cases are aged **15-50** years
- Median age of the cases is 35 years (Range 12-66 years).
- Gender: 20 (57.1%) female
- Five** (31.2 %) out of 16 districts have confirmed COVID-19 cases
- Fifteen** (40.5%) of cases are among **health care workers**

#### Age-Sex Distribution of COVID-19 Cases, Sierra Leone



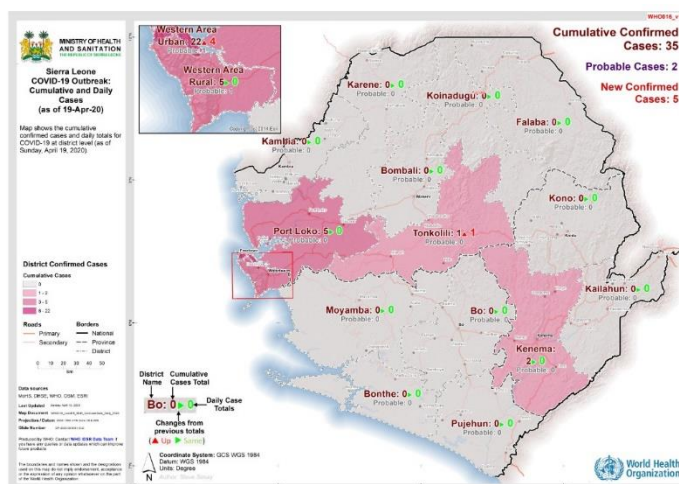
#### Summary of COVID-19 Cases in Sierra Leone as at 19th April, 2020

District	Confirmed Cases		Probable Cases		Deaths		Recovered Cases
	New Confirmed Cases	Cumulative Confirmed Cases	New Probable cases	Cumulative Probable Cases	New Deaths	Cumulative Deaths	
Western Area Urban	4	22	0	1	0	0	3
Western Area Rural	0	5	0	1	0	0	1
Port Loko	0	5	0	0	0	0	2
Kenema	0	2	0	0	0	0	0
Tonkolili	1	1	0	0	0	0	0
<b>Total</b>	<b>5</b>	<b>35</b>	<b>0</b>	<b>2</b>	<b>0</b>	<b>0</b>	<b>6</b>



- It is three weeks since the first COVID-19 case was reported on **30<sup>th</sup> March 2020**
- The highest number of cases were reported on **17<sup>th</sup> April, 2020**
- **20 (57.1%)** of confirmed cases have been reported in the **last 72 hours**.

- **Twenty-two (62.8 %)** of cases are from **Western Area Urban**
- All cases reported in Port Loko district have occurred among travellers
- **Tonkolili** is the newest district to report COVID-19 cases



Technical Areas	Variable	No
Contact Tracing	Current no of high risk contacts on follow up	669
	No. of contacts monitored in the last 24 hours	535 (79.9%)
Quarantine	Total No. Currently under quarantine	567
	Self-Quarantine	265 (46.7%)
	Institutional Quarantine	302 (53.3%)
Laboratory Testing	Laboratory tests done in last 24 hours	74
	Cumulative number of tests	1,030
	No of positive tests (% positivity rate)	35 (3.4 %)
Event Based Surveillance (last 24 hrs)	Total Alerts Received through 117 System	73
	No. of COVID related alerts	4
	No. of COVID related alerts investigated	4
	No. of COVID related alerts discarded	0

*This Situation Report was developed jointly by:*

**Government of Sierra Leone & World Health Organization, Sierra Leone**

*For any comments or inquiries contact:*

[eocnsr2020@gmail.com](mailto:eocnsr2020@gmail.com)