

Corona Virus Disease (COVID-19) Situational Report

Report No.17 Date of Issue: 16th April, 2020, 6pm GMT

HIGHLIGHTS

- As at 16th April 2020, there are **15** confirmed and **two** probable COVID-19 cases reported in Sierra Leone
- Two new** cases have been reported in the last 24 hours
- One of the new confirmed cases was reported in **Kenema** District
- Pillar level preparations for a subnational response are ongoing, including capacity building and increasing case management capacity

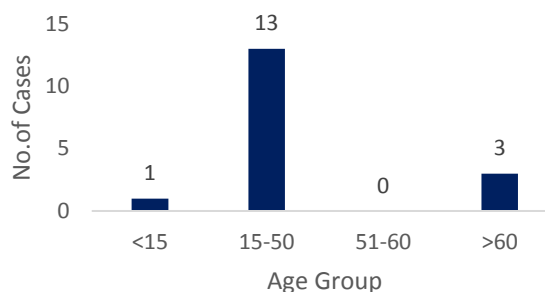
New	Confirmed	2
	Probable	0
	Deaths	0
Cumulative	Confirmed	15
	Probable	2
	Deaths	0

EPIDEMIOLOGY & SURVEILLANCE

Summary of COVID-19 Cases in Sierra Leone as at 16th April, 2020

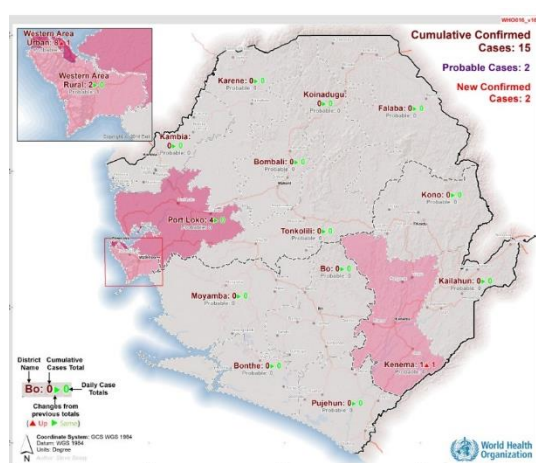
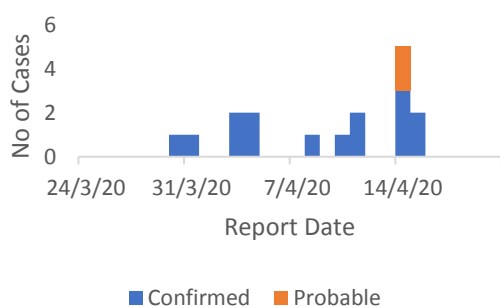
- Thirteen** (76.5%) cases are aged **15-50** years
- Median age of the cases is 34 years (Range 14-77 years).
- Gender: 11 (64.7%) males
- Four** (25%) out of 16 districts have confirmed COVID-19 cases

Age Distribution COVID-19 Cases, Sierra Leone



District	Confirmed Cases		Probable Cases		Deaths		Recovered Cases
	New Confirmed Cases	Cumulative Confirmed Cases	New Probable cases	Cumulative Probable Cases	New Deaths	Cumulative Deaths	
Western Area Urban	1	8	0	1	0	0	0
Western Area Rural	0	2	0	1	0	0	0
Port Loko	0	4	0	0	0	0	0
Kenema	1	1	0	0	0	0	0
Total	2	15	0	2	0	0	0

Confirmed and Probable COVID-19 Cases, Sierra Leone as at 16th April, 2020



Map Showing COVID-19 Cases, Sierra Leone, 16th April, 2020

Epidemiology of COVID-19 Cases, Sierra Leone 2020 as at 16th April 2020

- The first case of COVID-19 was confirmed on **30th March, 2020**
- **Six** of the confirmed cases and **one** probable case are contacts of case # two
- **Ten** cases have no history of travel to countries with COVID-19 transmission
- **Two** confirmed cases have no epidemiologic link to other confirmed cases and no history of travel
- **Three** of the cases are health care workers
- **Kenema district** in Eastern Sierra Leone is the latest district to report a

Technical Areas	Variable	No
Contact Tracing	Cumulative no of high risk contacts on follow up	182
	No. of contacts monitored in the last 24 hours	162 (89%)
Quarantine	Total No. Currently under quarantine	531
	Self-Quarantine	333 (62.7%)
	Institutional Quarantine	198 (37.3%)
Laboratory Testing	Laboratory tests done in last 24 hours	101
	Cumulative number of tests	821
	No of positive tests (% positivity rate)	15 (1.8 %)
Event Based Surveillance (last 24 hrs)	Total Alerts Received through 117 System	96
	No. of COVID related alerts	6
	No. of COVID related alerts investigated	6
	No. of COVID related alerts discarded	0

PUBLIC HEALTH ACTION / RESPONSE INTERVENTIONS

COORDINATION

- Daily technical and operational coordination meetings held at the PHNEOC

SURVEILLANCE

- Nationwide sensitization of health workers on COVID-19 is almost complete
- Refresher training of contact tracers and case investigation teams conducted in Freetown
- Delivery of samples to the lab and relay of results to quarantined persons is increasing turnaround time

LABORATORY

- Five laboratories are carrying out laboratory testing of COVID-19
- COVID-19 testing kits are running out and so is viral transport media
- Donation of VTM expected from the UN
- Leaking roof in CPHRL reported and is limiting the use of the lab

HAZARD CONTAINMENT (GOVERNMENT RESTRICTIONS)

- Inter-district travel restrictions in place starting 11th April 2020
- Ban on mass gatherings, closure of learning institutions and travel restrictions remain in effect

IPC and CASE MANAGEMENT

- Concept note for a mobile team delivering care to those in quarantine facilities has been developed
- Assessment of COVID-19 isolation and treatment sites conducted in Western Area, Kenema and Bo

RISK COMMUNICATION, COMMUNITY ENGAGEMENT & PSYCHOSOCIAL SUPPORT

- Social workers continue to provide support in various quarantine sites across the country
- Welfare concerns at quarantine centres reported and may affect the safety of vulnerable groups
- Lack of SOPs to guide quarantine management

RECOMMENDATIONS

- Training of waste management and burial teams
- Develop SOPs for enforcement of quarantine
- Streamline sample collection and relay of results for persons under quarantine
- Exhaustive contact listing and tracing for cases to limit further transmission

*This Situation Report was
developed jointly by:*

**Government of Sierra Leone &
World Health Organization, Sierra Leone**

*For any comments or inquiries
contact:*

eocnsr2020@gmail.com
