

Corona Virus Disease (COVID-19) Situational Report

Report No.16 Date of Issue: 15th April, 2020, 6pm GMT

HIGHLIGHTS

- As at 15th April 2020, there are **13** confirmed and **three** probable COVID-19 cases reported in Sierra Leone
- **No new** cases have been reported in the last 24 hours
- Pillar level response plans are being revised in line with the four epidemic scenarios
- Public health measures including travel restrictions, social distancing and closure of learning institutions remain in place

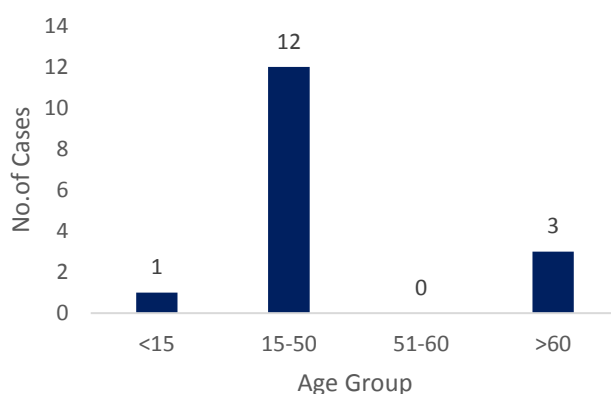
New	Cases	0
	Confirmed	0
	Probable	0
	Deaths	0
Cumulative	Cases	16
	Confirmed	13
	Probable	3
	Deaths	0

EPIDEMIOLOGY & SURVEILLANCE

Summary of COVID-19 Cases in Sierra Leone as at 15th April, 2020

- **Twelve** (75%) cases are aged **15-50** years
- Median age of the cases is 42 years (Range 14-77 years).
- Gender: 11(68.7%) males
 - **Three** out of 16 districts have reported confirmed COVID-19 cases
 - Western Area Urban
 - Western Area Rural
 - Port Loko

Age Distribution of COVID-19 Cases, Sierra Leone

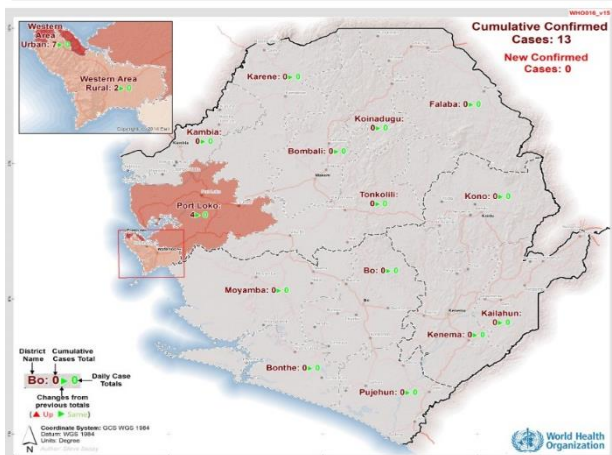
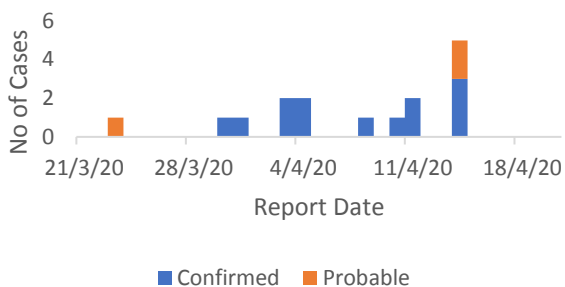


Summary of COVID-19 Cases in Sierra Leone as at 15th April, 2020

District	Confirmed Cases		Probable Cases		Total Probable & Confirmed Cases	Deaths		Recovered Cases
	New Confirmed Cases	Cumulative Confirmed Cases	New Probable cases	Cumulative Probable Cases		New Deaths	Cumulative Deaths	
Western Area Urban	0	7	0	2	9	0	0	0
Western Area Rural	0	2	0	1	3	0	0	0
Port Loko	0	4	0	0	4	0	0	0
Total	0	13	0	3	16	0	0	0



Confirmed and Probable COVID-19 Cases, Sierra Leone as at 15th April, 2020



Map Showing COVID-19 Cases, Sierra Leone, 15th April, 2020

Epidemiology of COVID-19 Cases, Sierra Leone 2020 as at 15th April 2020

- The first case of COVID-19 was confirmed on **30th March, 2020**
- Probable cases are persons with indeterminate laboratory results, whether symptomatic or not
- **Eight** cases have a history of travel to countries with local transmission of COVID-19
- Among **600** people currently under quarantine, **409 (68.1%)** are in self-quarantine
- **82** contacts have been discharged after completing follow-up and testing negative

Technical Areas	Variable	No
Contact Tracing	Cumulative no of high risk contacts on follow up	177
	No. of contacts monitored in the last 24 hours	157 (88.7%)
Quarantine	Total No. Currently under quarantine	600
	Self-Quarantine	409 (68.1%)
	Institutional Quarantine	191 (31.8%)
Laboratory Testing	Laboratory tests done in last 24 hours	19
	Cumulative number of tests	696
	No of positive tests (% positivity rate)	13 (1.9 %)
Event Based Surveillance (last 24 hrs)	Total Alerts Received through 117 System	101
	No. of COVID related alerts	5
	No. of COVID related alerts investigated	5
	No. of COVID related alerts discarded	0

This Situation Report was developed jointly by:

Government of Sierra Leone & World Health Organization, Sierra Leone

For any comments or inquiries contact:

eocnsr2020@gmail.com