

## Corona Virus Disease (COVID-19) Situational Report

Report No.15 Date of Issue: 14<sup>th</sup> April, 2020, 6pm GMT

### HIGHLIGHTS

- **Three new confirmed** case and **three probable** cases have been reported in the last 24 hours
- Cumulatively, **13** confirmed COVID-19 cases and **three** probable cases have been reported as at 14<sup>th</sup> April, 2020
- Assessments of COVID-19 quarantine, isolation and treatment facilities is ongoing
- Pillar level planning for four scenarios of COVID-19 outbreak is ongoing
- Public health measures including travel restrictions, social distancing and closure of learning institutions

#### Cumulative Cases

**13** Confirmed Cases

**3** Probable cases

#### New cases

**3** Confirmed

**3** Probable

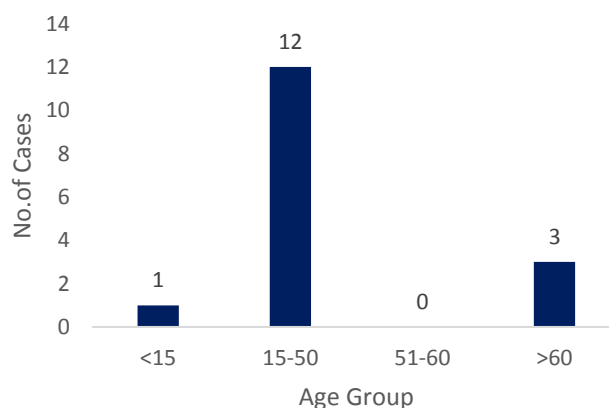
**0** Deaths

### EPIDEMIOLOGY & SURVEILLANCE

#### Summary of COVID-19 Cases in Sierra Leone as at 14<sup>th</sup> April, 2020

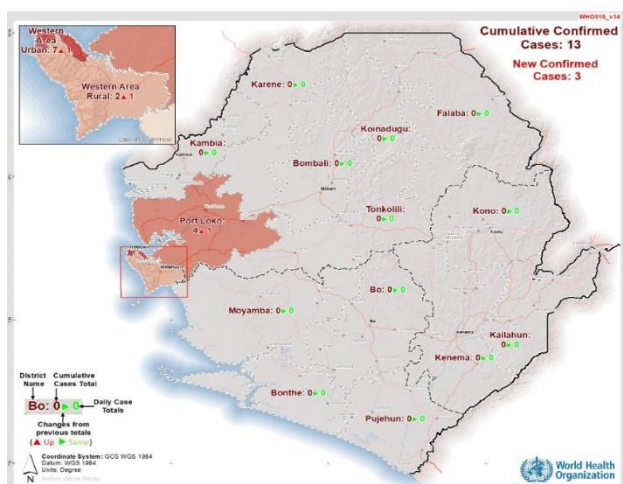
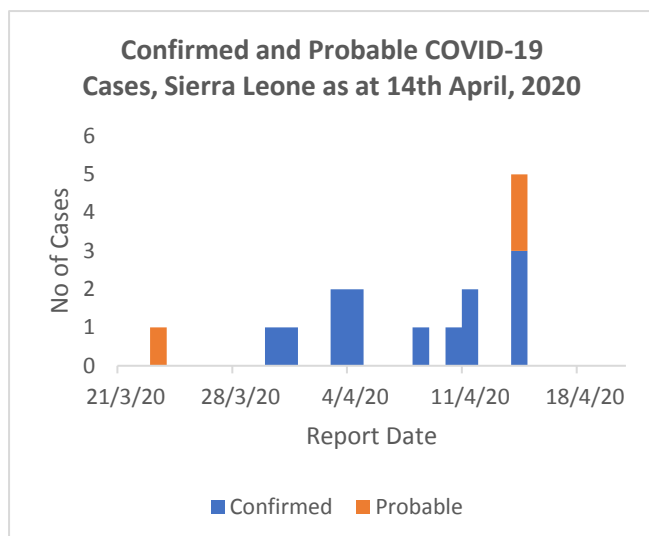
- **Twelve** (75%) cases are aged **15-50** years
- Median age of the cases is 42 years (Range 14-77 years).
- Gender: 11(68.7%) males
- **Three** out of 16 districts have reported confirmed COVID-19 cases
  - Western Area Urban
  - Western Area Rural
  - Port Loko

#### Age Distribution COVID-19 Cases, Sierra Leone



#### Summary of COVID-19 Cases in Sierra Leone as at 14<sup>th</sup> April, 2020

District	Confirmed Cases		Probable Cases		Total Probable & Confirmed Cases	Deaths		Recovered Cases
	New Confirmed Cases	Cumulative Confirmed Cases	New Probable cases	Cumulative Probable Cases		New Deaths	Cumulative Deaths	
Western Area Urban	1	7	2	2	9	0	0	0
Western Area Rural	1	2	1	1	3	0	0	0
Port Loko	1	4	0	0	4	0	0	0
<b>Total</b>	<b>1</b>	<b>13</b>	<b>3</b>	<b>3</b>	<b>16</b>	<b>0</b>	<b>0</b>	<b>0</b>



Map Showing COVID-19 Cases, Sierra Leone, 14<sup>th</sup> April, 2020

**Epidemiology of COVID-19 Cases, Sierra Leone 2020 as at 14<sup>th</sup> April 2020**

- The new confirmed cases include a traveller who was under quarantine and a contact of case #2
- Probable cases are those whose laboratory results are indeterminate
- The first probable case was identified on 23<sup>rd</sup> March 2020
- Among **675** people currently under quarantine, **461 (68.3%)** are in self-quarantine
- Nine (56.3%) of cases are from Western Area Urban District

Technical Areas	Variable	No
<b>Contact Tracing</b>	Cumulative no of high risk contacts on follow up	200
	No. of contacts monitored in the last 24 hours	191 (95.5%)
<b>Quarantine</b>	Total No. Currently under quarantine	675
	Home Quarantine	461 (68.3%)
	Institutional Quarantine	214 (31.7%)
<b>Laboratory Testing</b>	Laboratory tests done in last 24 hours	20
	Cumulative number of tests	575
	No of positive tests (% positivity rate)	10 (1.7 %)
<b>Event Based Surveillance (last 24 hrs)</b>	Total Alerts Received through 117 System	85
	No. of COVID related alerts	4
	No. of COVID related alerts investigated	4
	No. of COVID related alerts discarded	0

## PUBLIC HEALTH ACTION / RESPONSE INTERVENTIONS

### COORDINATION

- Daily technical and operational coordination meetings held at the PHNEOC

### SURVEILLANCE

- Alerts from the 117 event based surveillance system, related to COVID-19 are verified then investigated
- Active case search for severe pneumonia cases without explained cause have been started in some districts

### LABORATORY

- Shortage of extraction kits reported

### HAZARD CONTAINMENT (GOVERNMENT RESTRICTIONS)

- Inter-district travel restrictions in place starting 11<sup>th</sup> April 2020
- Ban on mass gatherings, closure of learning institutions and travel restrictions remain in effect

### IPC and CASE MANAGEMENT

- All 10 COVID-19 cases are in stable condition
- Training of six health workers on critical care
- Oxygen plant deployed and tested in 34 military hospital.
- Identification and assessment of existing structures/ health facilities for quarantine, isolation and treatment of COVID-19 cases is ongoing

### RISK COMMUNICATION, COMMUNITY ENGAGEMENT & SOCIAL MOBILISATION

- Daily press conference held with follow up questions from journalists
- Key messages on use of masks developed

## RECOMMENDATIONS

- Piping of oxygen into infectious disease unit at 34 military hospital
- Institute quality assurance of surveillance processes including contact tracing and quarantine
- Triage contacts according to risk levels before placing them under quarantine
- Refresher training for contact tracing supervisors in Western Area
- Data collected in situation room should cater to needs of the COVID-response
- Enhance active case search for COVID -19 in hospitals

---

*This Situation Report was  
developed jointly by:*

**Government of Sierra Leone &  
World Health Organization, Sierra Leone**

*For any comments or inquiries  
contact:*

[eocnsr2020@gmail.com](mailto:eocnsr2020@gmail.com)