

Corona Virus Disease (COVID-19) Situational Report

Report No.14 Date of Issue: 13th April, 2020, 6pm GMT

HIGHLIGHTS

- The first COVID-19 case in Sierra Leone was reported two weeks ago on **30th March 2020**
- Cumulatively, **10** confirmed COVID-19 cases have been reported as at 13th April, 2020
- No new cases have been reported in the last 24 hours
- COVID-19 case management plans, SOPs and protocols have been developed based on the four transmission scenarios

10 Confirmed Cases

0 New Cases

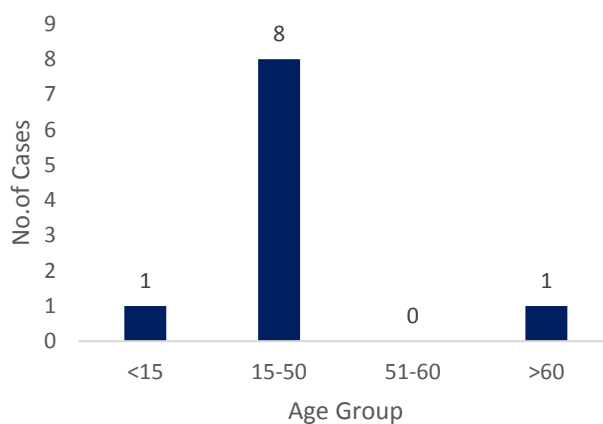
0 Deaths

EPIDEMIOLOGY & SURVEILLANCE

Summary of COVID-19 Cases in Sierra Leone as at 13th April, 2020

- **Eight (80%)** cases are aged **15-50** years
- Median age of the cases is 38 years (Range 14-64 years).
- Gender: six (60%) males
- **Three** out of 16 districts have reported confirmed COVID-19 cases
 - Western Area Urban
 - Western Area Rural
 - Port Loko

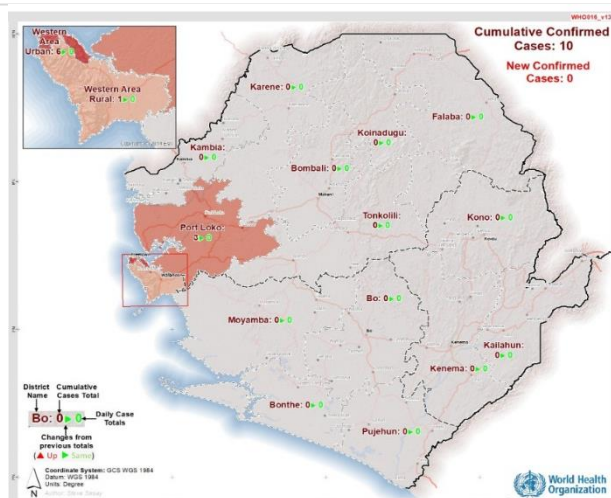
Age Distribution COVID-19 Cases, Sierra Leone



Summary of COVID-19 Cases in Sierra Leone as at 13th April, 2020

| District | Cases | | Deaths | | Recovered Cases |
|--------------------|-----------|-------------------------|------------|--------------------------|-----------------|
| | New Cases | Cumulative No. of Cases | New Deaths | Cumulative No. of Deaths | |
| Western Area Urban | 0 | 6 | 0 | 0 | 0 |
| Western Area Rural | 0 | 1 | 0 | 0 | 0 |
| Port Loko | 0 | 3 | 0 | 0 | 0 |
| Total | 0 | 10 | 0 | 0 | 0 |

**Reported COVID-19 Cases, Sierra Leone,
13th April 2020**



Map Showing COVID-19 Cases, Sierra Leone, 13th April, 2020

**Epidemiology of COVID-19 Cases,
Sierra Leone 2020 as at 13th April
2020**

- An **epidemiological link** has been established among **four** cases
- Out of 349 **high risk contacts** on follow-up, **three** have tested positive for COVID-19
- Secondary attack rate is **0.8%**
- **Half** of the cases have no history of recent travel to countries with local transmission of COVID-19
- Among **661** people currently under quarantine **463 (70%)** are in self-quarantine

| Technical Areas | Variable | No |
|---|--|-------------|
| Contact Tracing | Cumulative no of contacts on follow up | 190 |
| | No. of contacts monitored in the last 24 hours | 174 (91.6%) |
| Quarantine | Total No. Currently under quarantine | 661 |
| | Home Quarantine | 463 (70%) |
| | Institutional Quarantine | 198 (30%) |
| Laboratory Testing | Laboratory tests done in last 24 hours | 20 |
| | Cumulative number of tests | 575 |
| | No of positive tests (% positivity rate) | 10 (1.7 %) |
| Event Based Surveillance (last 24 hrs) | Total Alerts Received through 117 System | 101 |
| | No. of COVID related alerts | 10 |
| | No. of COVID related alerts investigated | 10 |
| | No. of COVID related alerts discarded | 0 |

This Situation Report was developed jointly by:

Government of Sierra Leone & World Health Organization, Sierra Leone

For any comments or inquiries contact:

eocnsr2020@gmail.com