

## Corona Virus Disease (COVID-19) Situational Report

Report No.13 Date of Issue: 12<sup>th</sup> April, 2020, 6pm GMT

### HIGHLIGHTS

- **No new** confirmed COVID-19 case was reported in the last 24 hours
- Cumulative number of confirmed COVID-19 cases reported as at 12<sup>th</sup> April 2020 is **10**
- Public health measures for control of COVID-19 include inter-district travel restrictions, social distancing, closure of learning institutions, quarantine, and isolation of cases

**10 Confirmed Cases**

**0 New Cases**

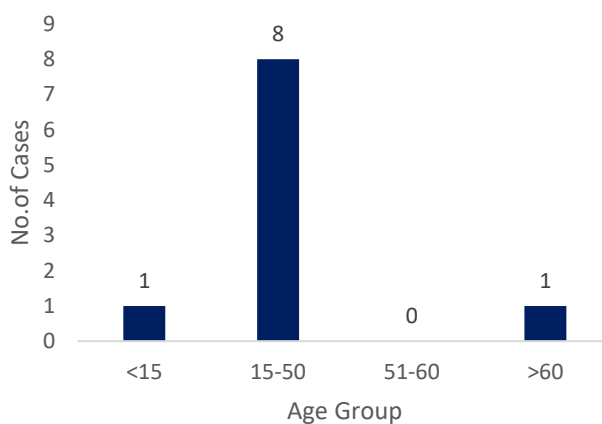
**0 Deaths**

### EPIDEMIOLOGY & SURVEILLANCE

#### Summary of COVID-19 Cases in Sierra Leone as at 12<sup>th</sup> April, 2020

- The total number of confirmed COVID-19 cases in Sierra Leone as at 12<sup>th</sup> April, 2020, 6pm is **10**.
- **No new** cases have been reported in the last 24 hours.
- **Eight (80%)** cases are aged **15-50** years
- Median age of the cases is 38 years (Range 14-64 years).

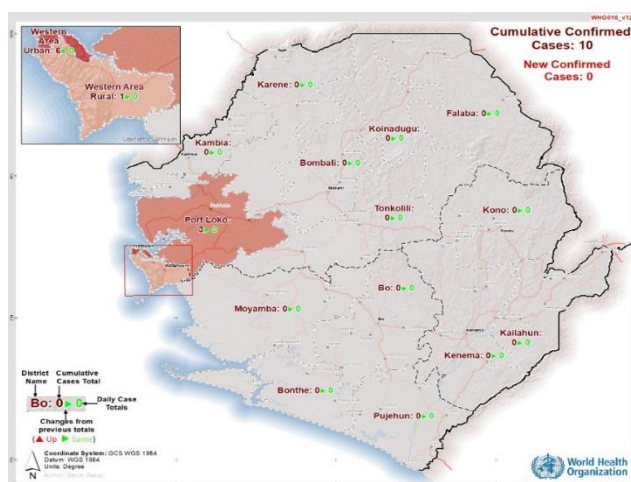
#### Age Distribution COVID-19 Cases, Sierra Leone



#### Summary of COVID-19 Cases in Sierra Leone as at 12<sup>th</sup> April, 2020

District	Cases		Deaths		Recovered Cases
	New Cases	Cumulative No. of Cases	New Deaths	Cumulative No. of Deaths	
Western Area Urban	0	6	0	0	0
Western Area Rural	0	1	0	0	0
Port Loko	0	3	0	0	0
<b>Total</b>	<b>0</b>	<b>10</b>	<b>0</b>	<b>0</b>	<b>0</b>

**Reported COVID-19 Cases, Sierra Leone,  
12th April 2020**



Map Showing COVID-19 Cases, Sierra Leone, 12th April, 2020

**Distribution of COVID-19 Cases,  
Sierra Leone 2020 as at 12<sup>th</sup> April  
2020**

- The first case of COVID-19 in Sierra Leone was confirmed on **30<sup>th</sup> March 2020**
- **Half** of the cases have no history of recent travel to countries with local transmission of COVID-19
- **Three** out of 16 districts have reported confirmed COVID-19 cases
  - Western Area Urban
  - Western Area Rural
  - Port Loko
- **Six (60%)** out of ten cases are from Western Area Urban
- Among **614** people currently under quarantine **423 (68.9%)** are in self-quarantine

Technical Areas	Variable	No
<b>Contact Tracing</b>	Cumulative no of contacts on follow up	384
	No. of contacts monitored in the last 24 hours	384 (100%)
<b>Quarantine</b>	Total No. Currently under quarantine	614
	Home Quarantine	423 (68.9%)
	Institutional Quarantine	191 (31.1%)
<b>Laboratory Testing</b>	Laboratory tests done in last 24 hours	58
	Cumulative number of tests	555
	No of positive tests (% positivity rate)	10 (1.8 %)
<b>Event Based Surveillance (last 24 hrs)</b>	Total Alerts Received through 117 System	82
	No. of COVID related alerts	6
	No. of COVID related alerts investigated	6
	No. of COVID related alerts discarded	0

*This Situation Report was developed jointly by:*

**Government of Sierra Leone & World Health Organization, Sierra Leone**

*For any comments or inquiries contact:*

[eocnsr2020@gmail.com](mailto:eocnsr2020@gmail.com)