

## Corona Virus Disease (COVID-19) Situational Report

Report No.12 Date of Issue: 11<sup>th</sup> April, 2020, 6pm GMT

### HIGHLIGHTS

- **Two new** confirmed COVID-19 cases were reported in the last 24 hours
- Cumulative number of confirmed COVID-19 cases reported as at 11<sup>th</sup> April 2020 is **10**
- The two new cases are contacts of a confirmed case
- Two- week partial lockdown started today

**10 Confirmed Cases**

**2 New Cases**

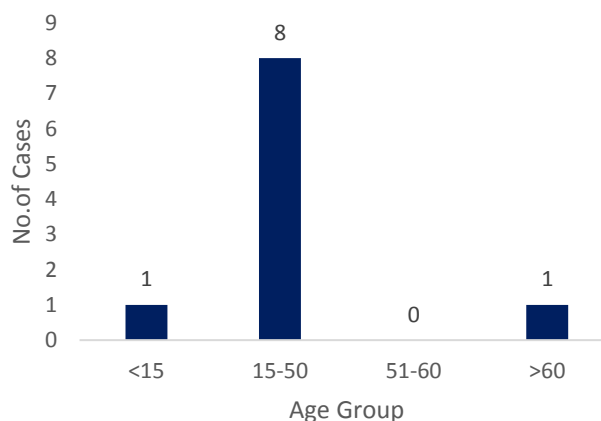
**0 Deaths**

### EPIDEMIOLOGY & SURVEILLANCE

#### Summary of COVID-19 Cases in Sierra Leone as at 11<sup>th</sup> April, 2020

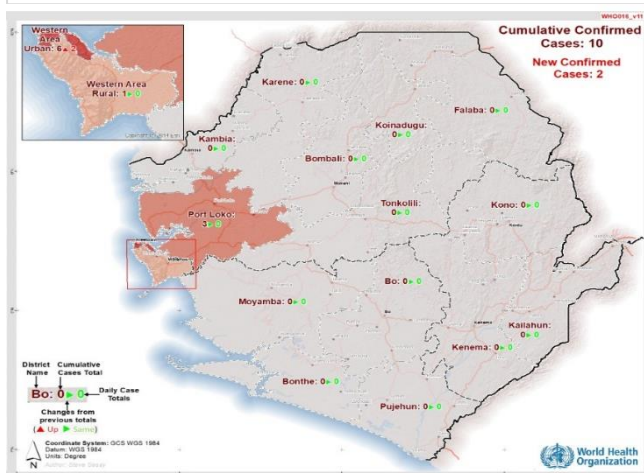
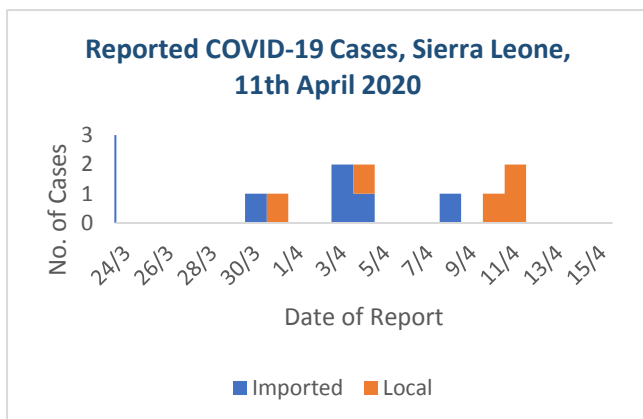
- Cumulatively, there are **ten** confirmed cases as at 11<sup>th</sup> April, 2020, 6pm.
- **Two new** cases reported in the last 24 hours.
- **Eight** cases are aged **15-50** years
- Median age of the cases is 38 years (Range 14-64 years).
- Gender: six (60%) males

#### Age Distribution COVID-19 Cases, Sierra Leone



#### Summary of COVID-19 Cases in Sierra Leone as at 11<sup>th</sup> April, 2020

District	Cases		Deaths		Recovered Cases
	New Cases	Cumulative No. of Cases	New Deaths	Cumulative No. of Deaths	
Western Area Urban	2	6	0	0	0
Western Area Rural	0	1	0	0	0
Port Loko	0	3	0	0	0
<b>Total</b>	<b>2</b>	<b>10</b>	<b>0</b>	<b>0</b>	<b>0</b>



Map Showing COVID-19 Cases, Sierra Leone, 11<sup>th</sup> April, 2020

**Distribution of COVID-19 Cases, Sierra Leone 2020 as at 11<sup>th</sup> April 2020**

- The first case of COVID-19 in Sierra Leone was confirmed on **30<sup>th</sup> March 2020**
- The two new reported cases are contacts of case #2
- **Half** of the cases have no history of recent travel to countries with local transmission of COVID-19
- **Three** out of 16 districts have reported confirmed COVID-19 cases
  - Western Area Urban
  - Western Area Rural
  - Port Loko
- **Six (60%)** out of ten cases are from Western Area Urban

Technical Areas	Variable	No
<b>Contact Tracing</b>	Cumulative no of contacts on follow up	343
	No. of contacts monitored in the last 24 hours	343 (100%)
<b>Quarantine</b>	Total No. Currently under quarantine	583
	Home Quarantine	326
	Institutional Quarantine	257
<b>Laboratory Testing</b>	Laboratory tests done in last 24 hours	31
	Cumulative number of tests	497
	No of positive tests (% positivity rate)	10 (2 %)
<b>Event Based Surveillance (last 24 hrs)</b>	Total Alerts Received through 117 System	49
	No. of COVID related alerts	9
	No. of COVID related alerts investigated	9
	No. of COVID related alerts discarded	2

*This Situation Report was developed jointly by:*

**Government of Sierra Leone & World Health Organization, Sierra Leone**

*For any comments or inquiries contact:*

[eocnsr2020@gmail.com](mailto:eocnsr2020@gmail.com)