

Corona Virus Disease (COVID-19) Situational Report

Report No.18 Date of Issue: 17th April, 2020, 6pm GMT

HIGHLIGHTS

- As at 17th April 2020, there are **26** confirmed and **two** probable COVID-19 cases reported in Sierra Leone
- Eleven new** confirmed COVID-19 cases have been reported in the last 24 hours
- This is the highest number of cases reported over a 24- hour period since the outbreak started
- All the new cases are contacts of primary cases
- The cumulative number of cases increased by 73.3% in the last 24 hours

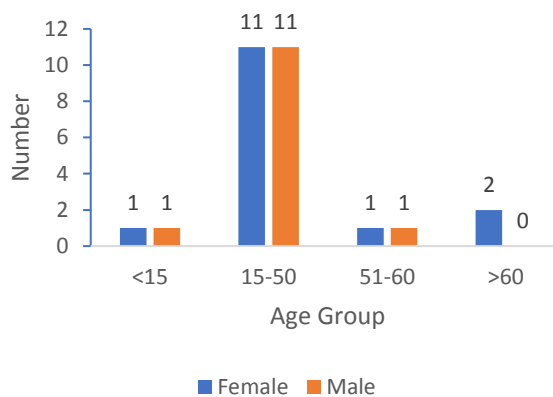
New	Confirmed	11
	Probable	0
	Deaths	0
Cumulative	Confirmed	26
	Probable	2
	Deaths	0

EPIDEMIOLOGY & SURVEILLANCE

Summary of COVID-19 Cases in Sierra Leone as at 17th April, 2020

- Twenty- three** (82.1%) cases are aged **15-50** years
- Median age of the cases is 35 years (Range 13-66 years).
- Gender: 15 (53.6%) female
- Four** (25%) out of 16 districts have confirmed COVID-19 cases
- Eleven** (39.3%) confirmed cases have occurred among **health care workers**

Age-Sex Distribution of COVID-19 Cases, Sierra Leone



Summary of COVID-19 Cases in Sierra Leone as at 17th April, 2020

District	Confirmed Cases		Probable Cases		Deaths		Recovered Cases
	New Confirmed Cases	Cumulative Confirmed Cases	New Probable cases	Cumulative Probable Cases	New Deaths	Cumulative Deaths	
Western Area Urban	7	15	0	1	0	0	0
Western Area Rural	3	5	0	1	0	0	0
Port Loko	0	4	0	0	0	0	0
Kenema	1	2	0	0	0	0	0
Total	11	26	0	2	0	0	0

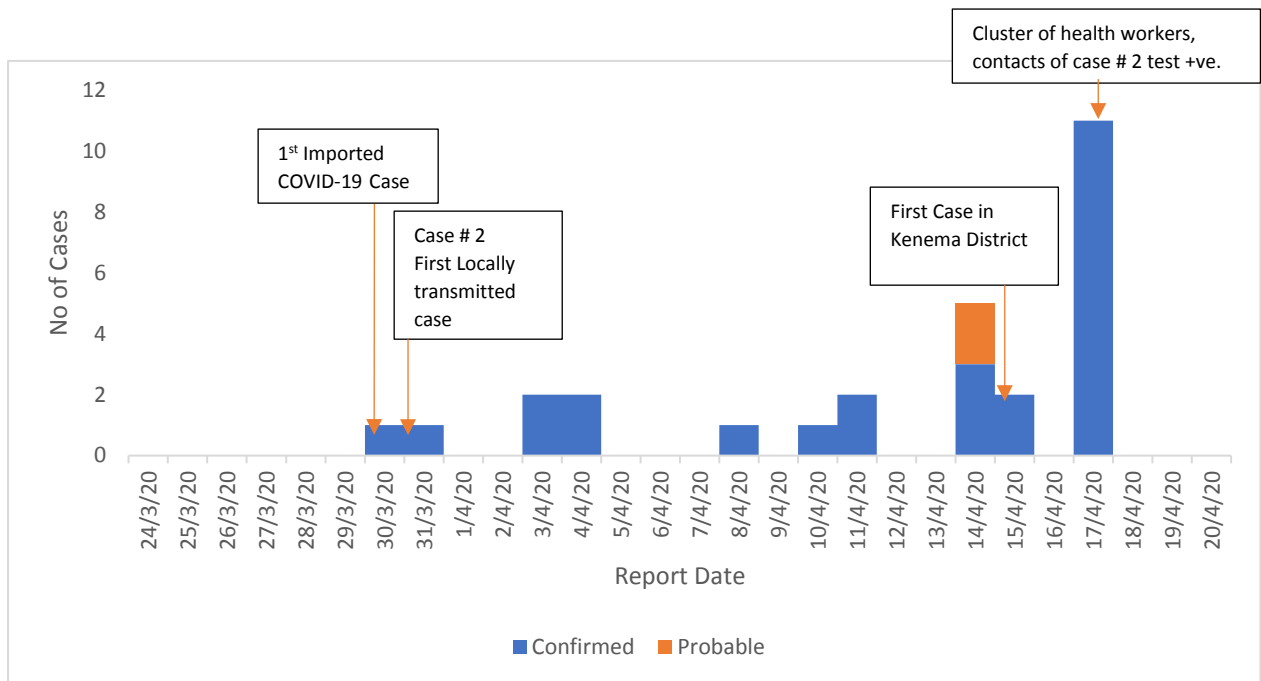
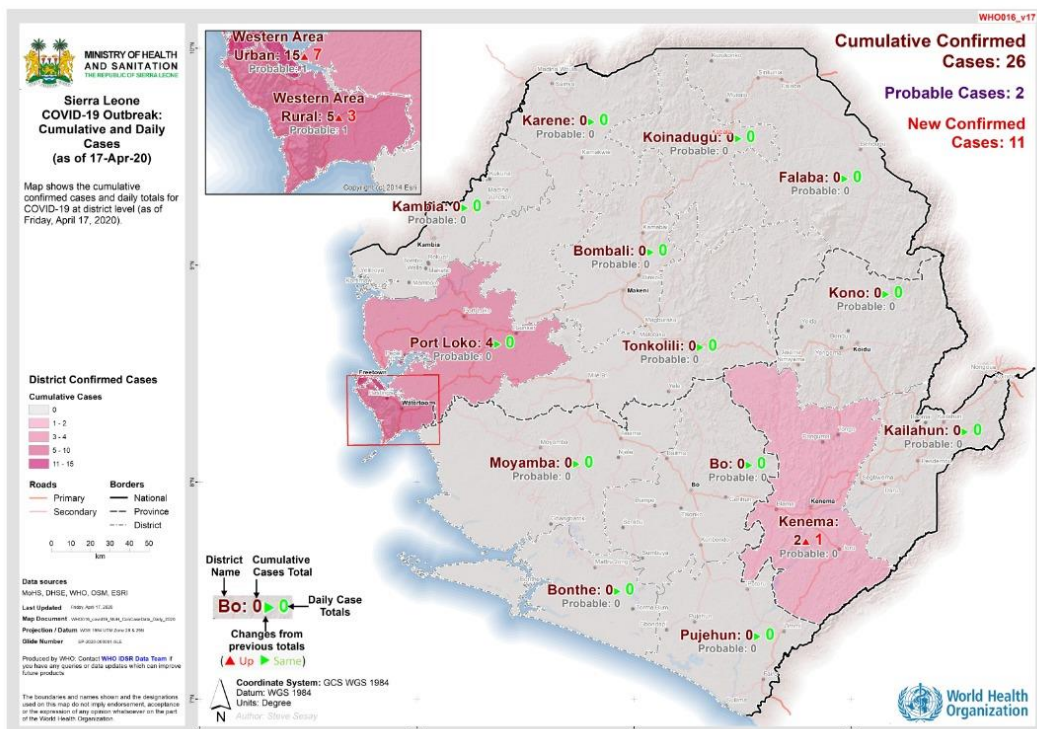


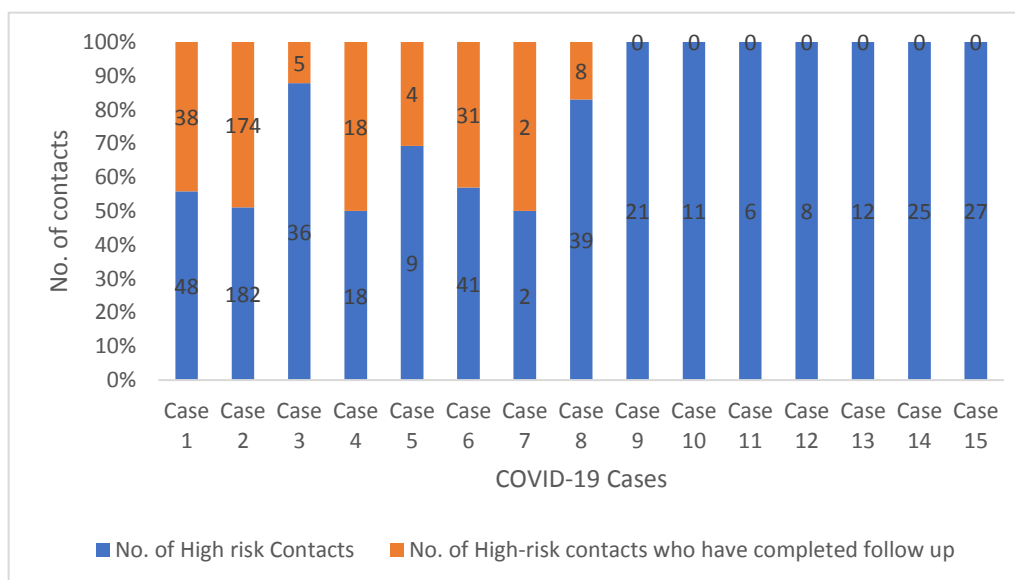
Figure 2: Epidemic curve of COVID-19 cases in Sierra Leone as at 17th April, 2020



The four districts that have reported COVID-19 cases are Western Area Urban, Western Area Rural, Port Loko and Kenema. The highest number of cases have been reported in Western Area Urban. All cases reported in Port Loko have occurred among travellers returning from countries with local transmission of COVID-19.

Technical Areas	Variable	No
Contact Tracing	Cumulative no of high risk contacts on follow up	229
	No. of contacts monitored in the last 24 hours	204 (89%)
Quarantine	Total No. Currently under quarantine	532
	Self-Quarantine	250 (47%)
	Institutional Quarantine	282(53%)
Laboratory Testing	Laboratory tests done in last 24 hours	75
	Cumulative number of tests	896
	No of positive tests (% positivity rate)	26 (2.9 %)
Event Based Surveillance (last 24 hrs)	Total Alerts Received through 117 System	85
	No. of COVID related alerts	6
	No. of COVID related alerts investigated	6
	No. of COVID related alerts discarded	0

So far, 27 high risk contacts of case # 15 (from Kenema district) have been identified. Contact listing and tracing for cases 16-26 started today. Case # 2 had the highest number of contacts listed for follow up and most have been tested for COVID-19 and discharged. Two contacts of case 2 with indeterminate results are under isolation.



This Situation Report was developed jointly by:

Government of Sierra Leone & World Health Organization, Sierra Leone

For any comments or inquiries contact:

eocnsr2020@gmail.com