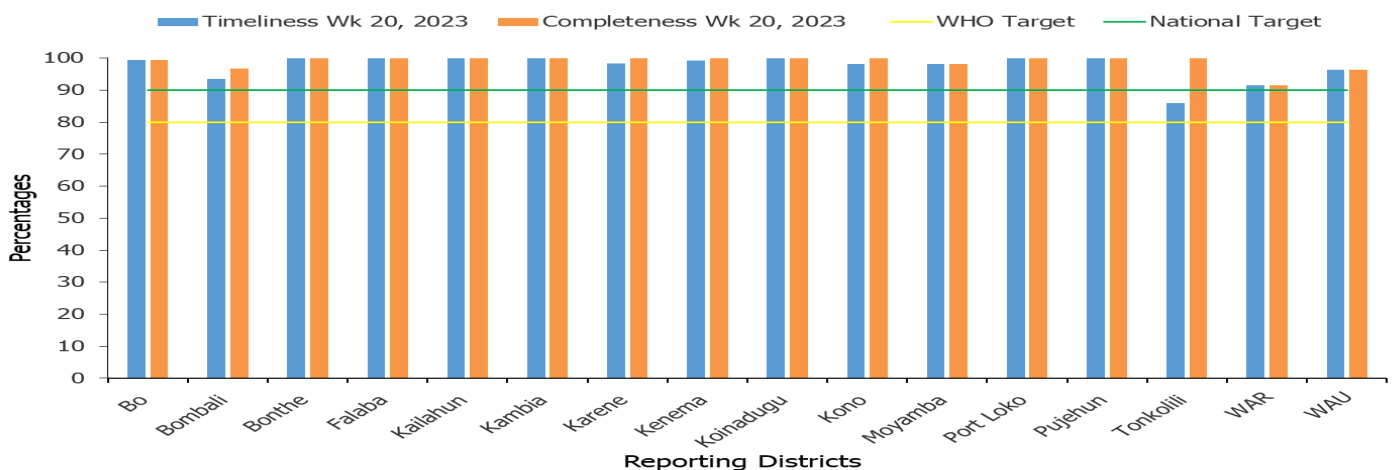


- **Acute Flaccid Paralysis (AFP):** One (1) case of AFP was reported this week aged above five years from WAU. The case was investigated and sample sent to CPHRL for confirmatory shipment
- **Animal Bite (Dog):** Twenty-four (24) Dog bite cases were reported this week. Of the cases, three were under five and twenty-one were above five years. The highest number of cases were from Bombali (10), Kono and Port Loko (3) each per district
- **Animal Bite (Snake):** Eleven (11) Snake bite cases reported this week all aged above five years. The highest number of cases were from Port Loko (3), Pujehun and Tonkolili (2) each per district
- **Maternal death:** Eight (8) maternal deaths were reported from Tonkolili (3), Bombali and WAU (2) each per district, Pujehun (1)
- **Measles:** Ten (10) cases of suspected Measles were reported this week all aged under five years. The highest number of cases were from WAU (6), WAR (4). The cases were investigated and samples sent to CPHRL for confirmation
- **Yellow Fever :** Three (3) suspected cases of Yellow Fever all aged above five years with one death reported this week. The death was reported from Pujehun which had (2) cases and Port Loko (1). The cases were investigated and samples sent to CPHRL for confirmation
- **Acute Viral Hemorrhagic Fever (AVHF):** One (1) case of suspected AVHF was reported this week all aged under five years from Kenema. The case was investigated and sample sent to CPHRL for confirmation
- **Bacterial Meningitis:** Three (3) cases of suspected Meningitis were reported this week all aged under five from WAU (3). No sample was collected for laboratory confirmation.

KEY HIGHLIGHTS FOR COVID-19 FOR THE

- **COVID-19 :** No confirmed case was reported this week
- **COVID-19 Death:** No death related to COVID-19 was reported this week
- **COVID-19 Recovery:** No recovery was reported for this week

Health Facility Timeliness & Completeness of Weekly report by district, (Epi week 20, 2023)

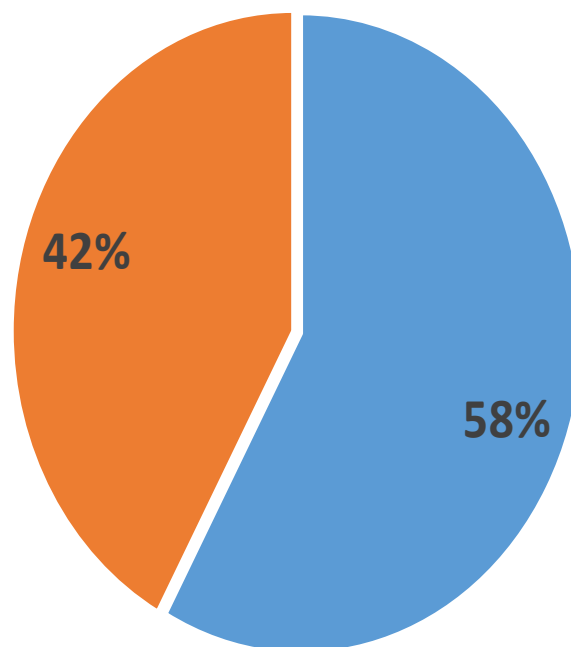


For week 20 of 2023, 15 out of 16 districts achieved both the WHO and national target for timeliness and completeness, while one met national target for completeness but didn't met for timeliness

Key highlights on COVID-19 Surveillance updates (Epi Week 20, 2023)

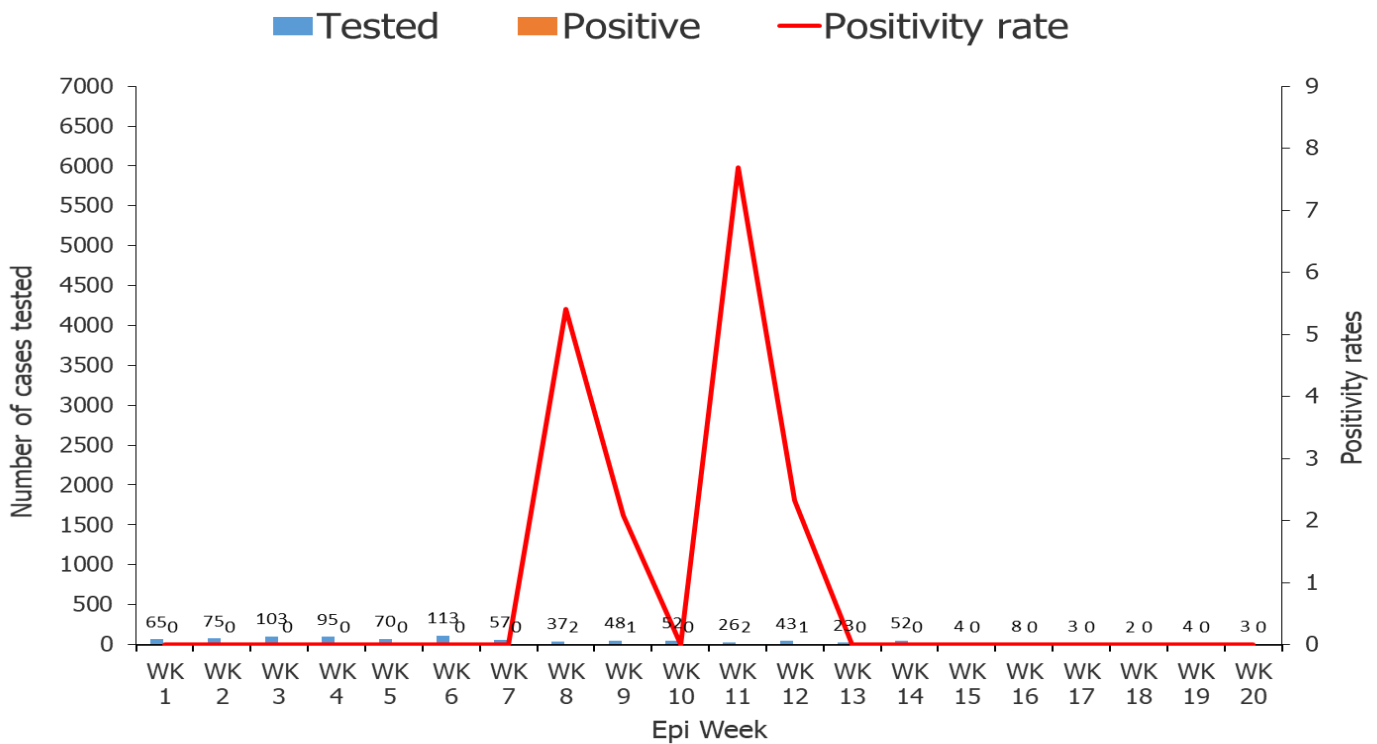
- A total of 53 reporting sites conducting COVID-19 RDT at facility level
- No RDT test was done and 3 departure testing were conducted with zero positive
- 0 Confirmed COVID-19 case reported: (Source: Both PCR & Ag-RDTs test result)
- 0 Death reported (Source: DHIS2 eCBDS)
- 0 recovered reported: (Source: DHIS2 eCBDS)

COVID-19 test conducted by sex (Epi Week 51 – 52, 2022 & Week 1 - 20, 2023) N=7730



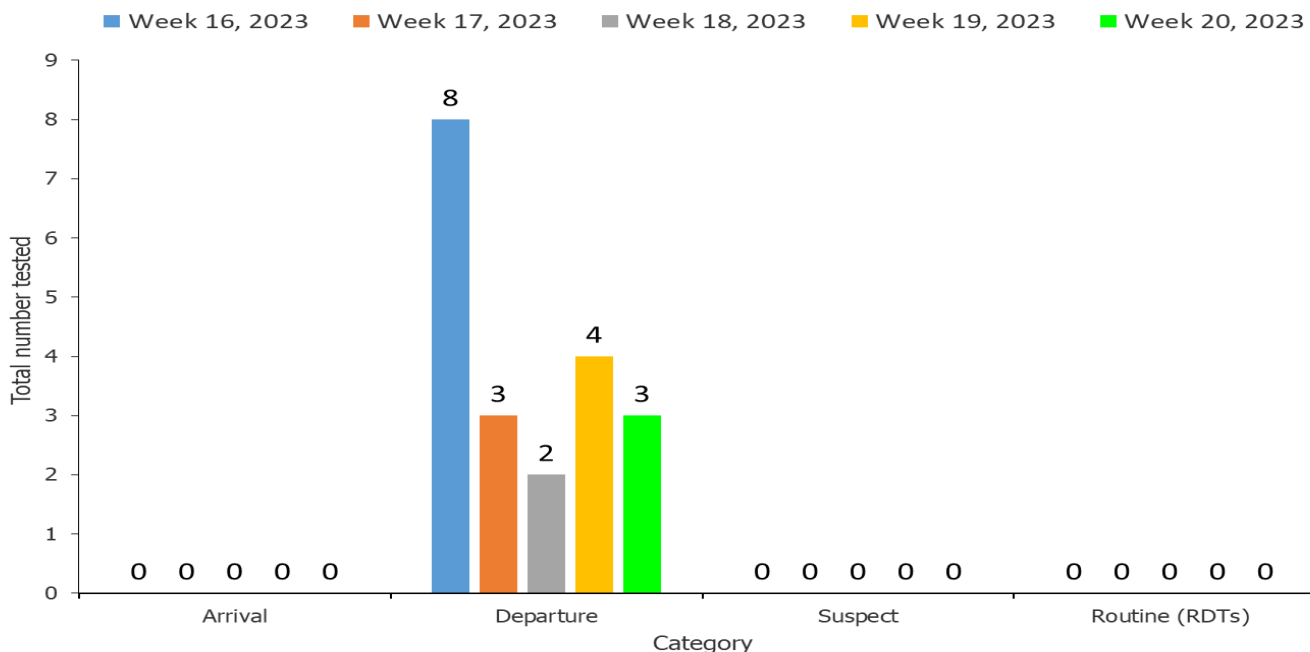
■ Male ■ Female

Positivity rate of COVID-19 confirmed cases (Epi Week 1 - 20, 2023) N=6



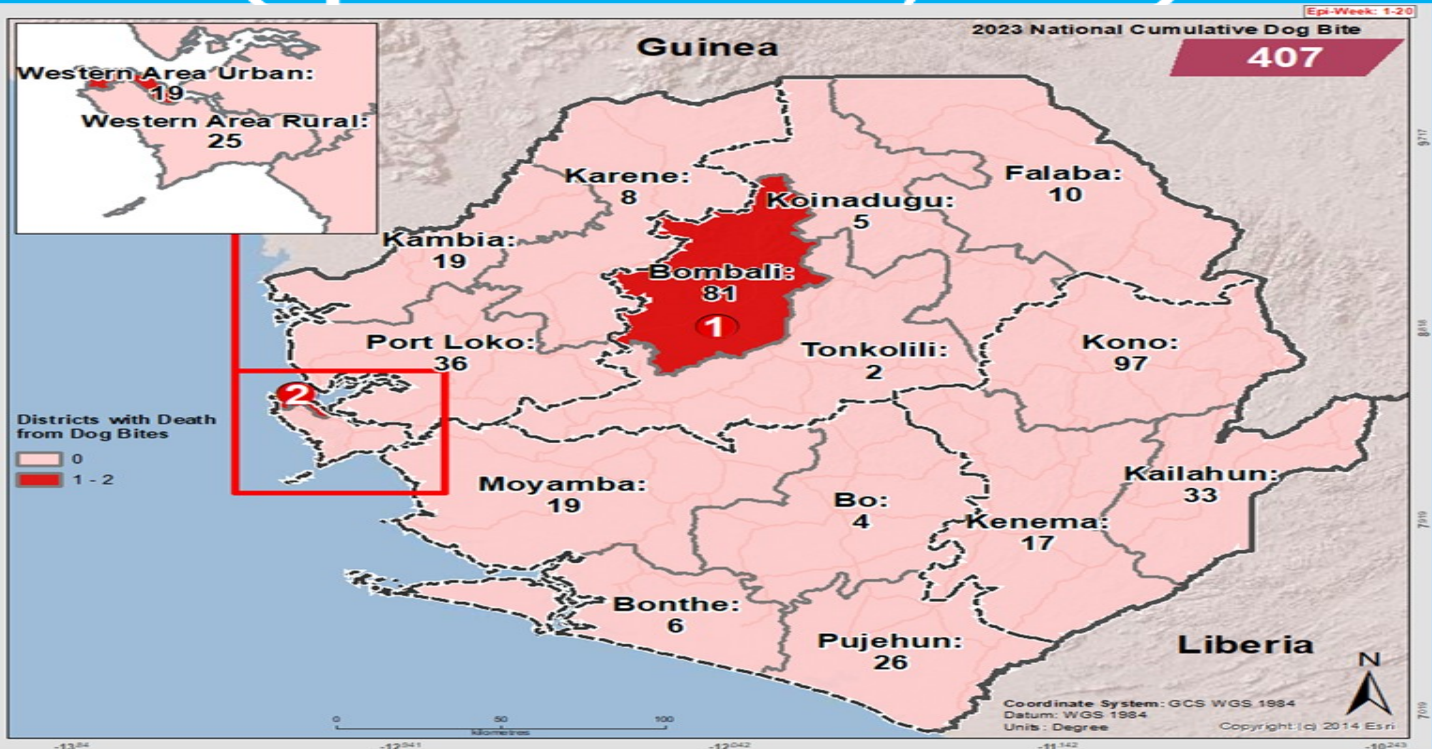
For week 20 of 2023 no confirmed COVID-19 case was reported countrywide. The positivity rate has been fluctuating over the past eight weeks

Cumulative COVID-19 test conducted by Category (Epi Week 16 - 20, 2023) N=20



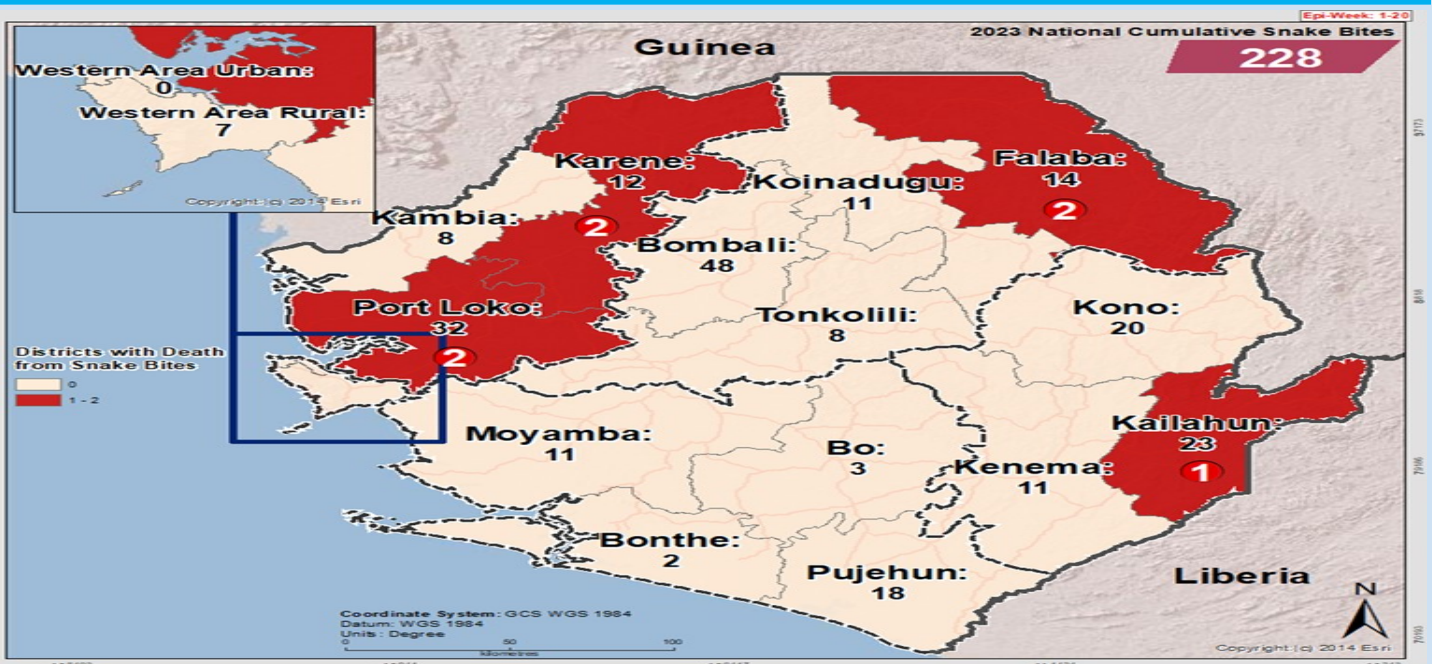
A greater proportion of testing is been done through routine facility RDT testing. The COVID-19 response has been transitioned to the Ministry of Health and Sanitation and facility testing is been promoted

Cumulative Dog Bite cases reported by district (Epi Week 1 - 20, 2023)



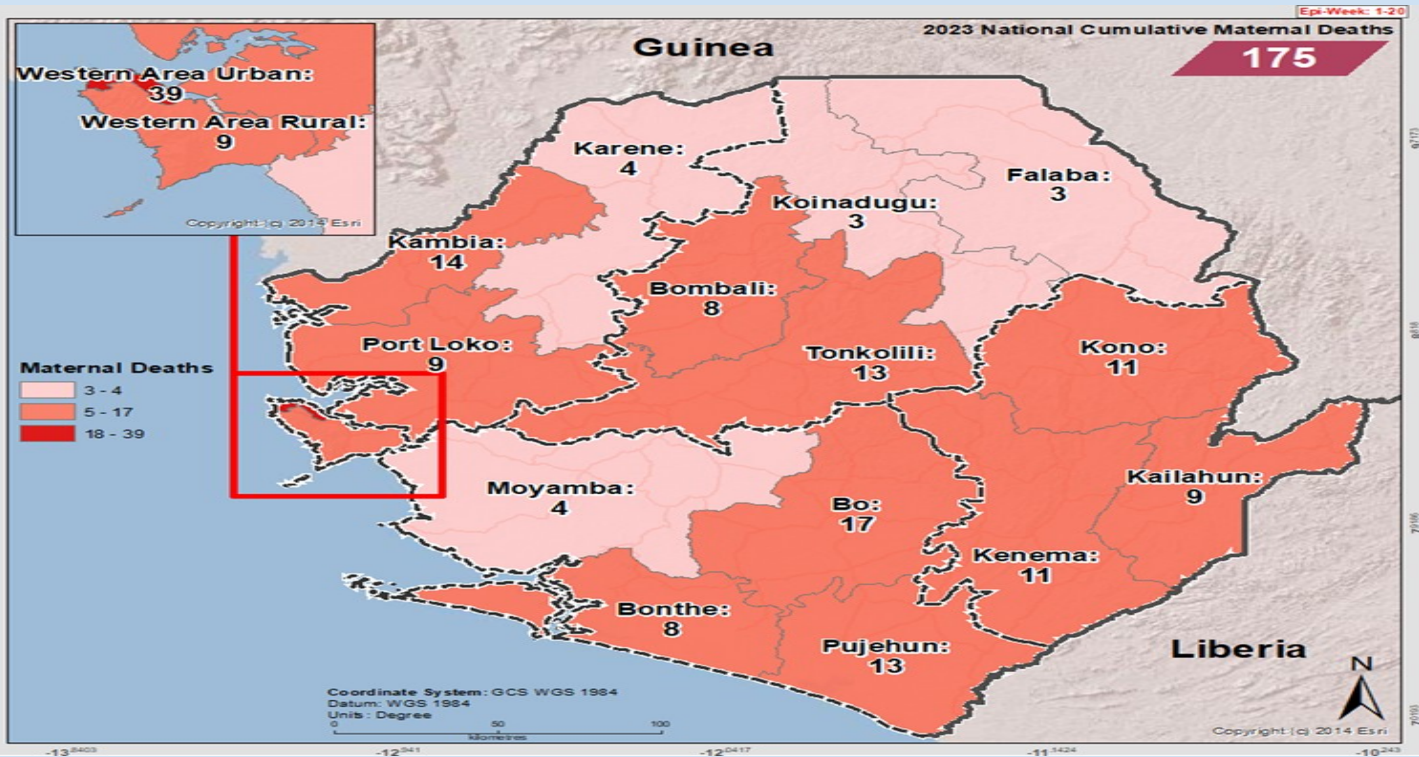
For week 20 of 2023, twenty-four Dog bite cases were reported from nine districts. The cumulative number of cases country-wide is 407. The districts of Koinadugu, Kono, Bombali, Kailahun, Kenema, Pujehun, Moyamba, WAU, Bonthe and Port Loko, have reported higher numbers of Dog bite cases.

Cumulative Snake Bite cases reported by district (Epi Week 1 - 20, 2023)



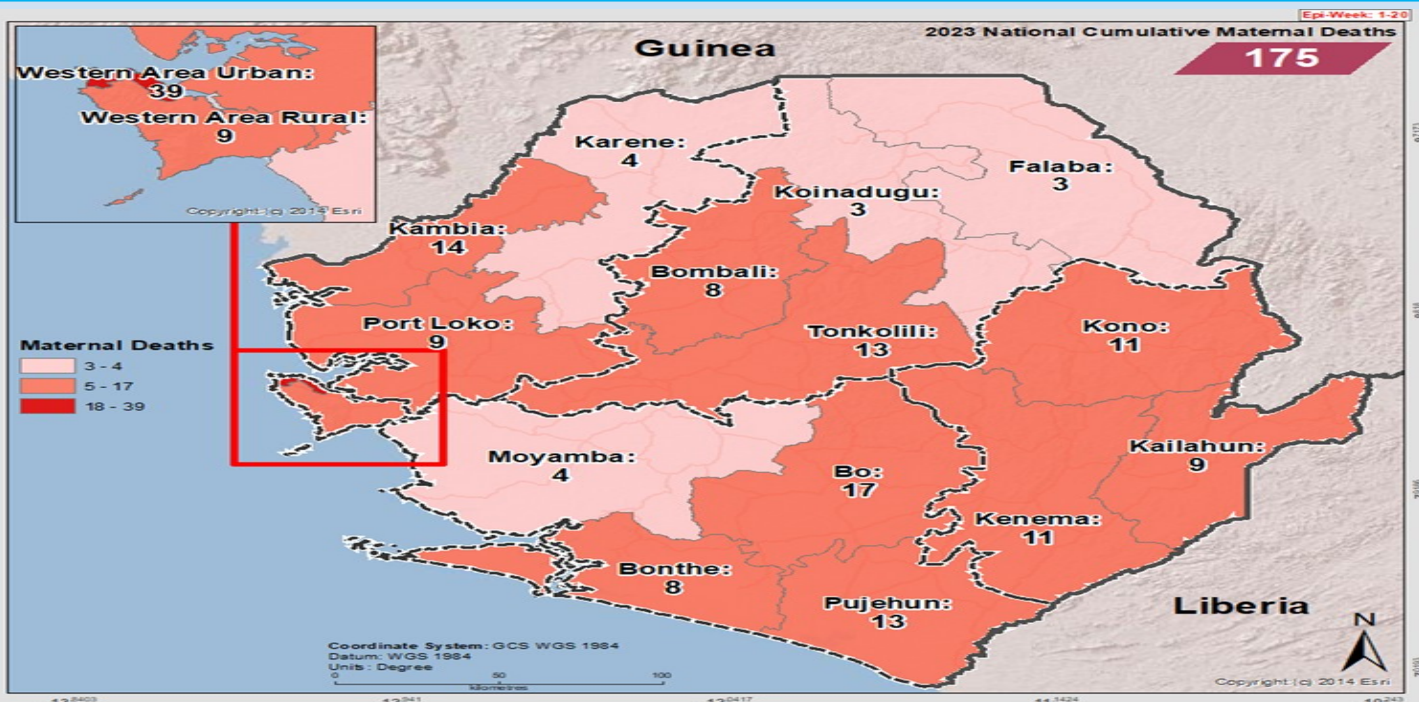
For week 20 of 2023, a total of eleven (11) snake bites reported from seven districts. The districts that have recorded higher numbers of snake bites are Kono, Bombali, Koinadugu, Port Loko, Kenema, Karene and Pujehun district. The cumulative total since the start of the year is 228 countrywide.

Cumulative Maternal Death reported by district (Epi Week 1 – 20, 2023)



For week 20 of 2023, eight maternal death were reported from four districts. The cumulative deaths since the start of the year is 175 countrywide.

Cumulative Maternal Death reported by district (Epi Week 1 – 20, 2023)



In comparison with week 19 of 2022, week 20 of 2023 has reported less death with three districts reporting less than five deaths in eighteen weeks.

NATIONAL WEEKLY BULLETIN PRODUCTION TEAM



Editor: Charles Keimbe



Publisher: Mr. Harold Thomas



Co-Editor: Haja F Bangura



Data Analyst: Mr. Samba Kamara