



**GOVERNMENT OF SIERRA LEONE**  
**MINISTRY OF HEALTH AND SANITATION**  
**DIRECTORATE OF HEALTH SECURITY AND EMERGENCIES**

**WEEK 41**

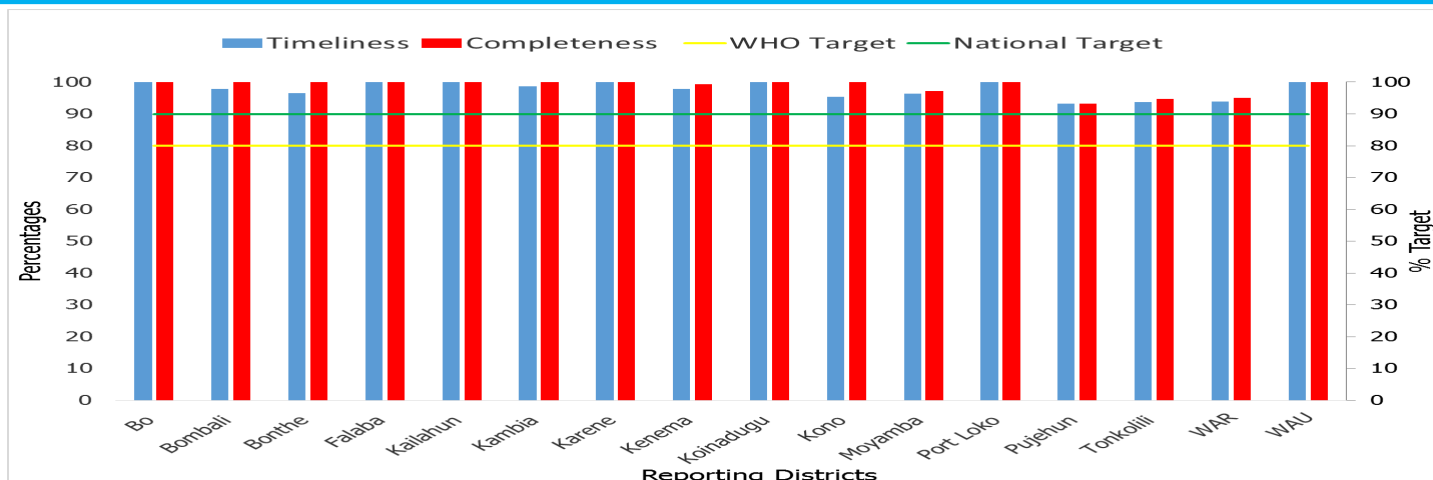
**Week 41: 10th — 16th Oct, 2022**

- **Acute Flaccid Paralysis (AFP):** One (1) case of AFP was reported this week in an under five child from Bombali district. The case was investigated and samples sent to CPHRL for confirmatory shipment
- **Animal Bite (Dog):** Fifteen (15) Dog bite cases were reported this week. Of the cases, two were under fives and thirteen were above five years of age. The highest number of cases were from Bombali (4), Port Loko and Kono (3) each per district.
- **Animal Bite (Snake):** Sixteen (16) Snake bite cases were reported this week. All the cases were above five years of age. The highest number of cases were from Bombali (3), with Kambia, Kono, Pujehun, and Tonkolili (2) each per districts
- **Maternal death:** Seven (7) maternal deaths were reported this week. Moyamba (2) with Bonthe, Falaba, Karene, Kenema and WAU (1) each per districts.
- **Measles:** Thirty-nine (39) cases of suspected Measles were reported this week with thirty-eight under fives and one above five years of age. The cases were collected and sent to CPHRL for confirmation
- **Yellow Fever :** Two (2) cases of suspected Yellow Fever were reported this week. One under five and one above five years of age from Bonthe and Karene districts. The cases were investigated and samples sent to CPHRL for confirmation
- **Acute Viral Hemorrhagic Fever (AVHF):** One (1) case of suspected AVHF was reported this week in an under five years of age from Kailahun. The case was investigated and sample sent to CPHRL for confirmation

**KEY HIGHLIGHTS FOR COVID-19 FOR THE WEEK**

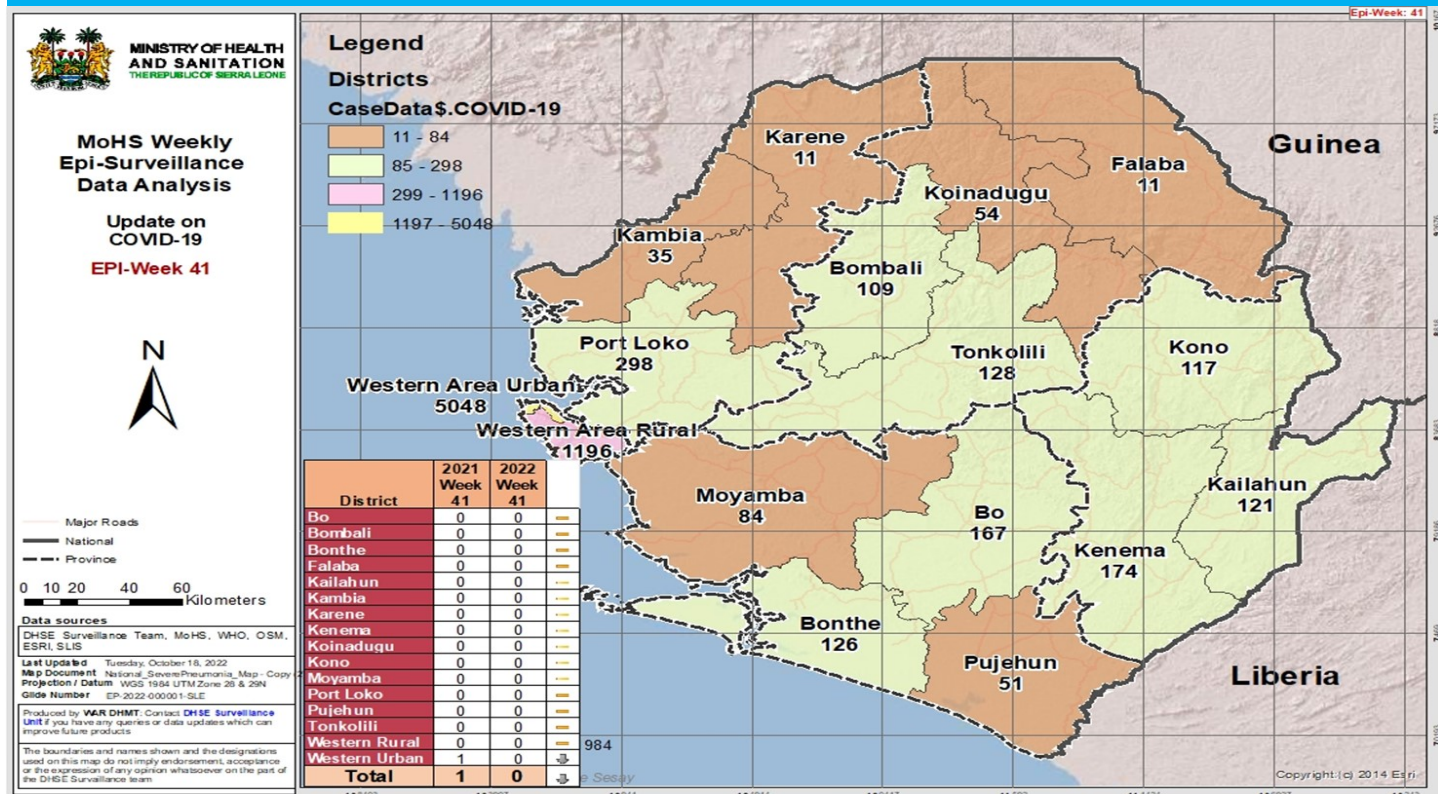
- **COVID-19 :** One confirmed case was reported this week from WAU district
- **COVID-19 Death:** No death related to COVID-19 was reported this week
- **COVID-19 Cumulative Recovered:** No Recovery related to COVID-19 was reported this week

**Health Facility Completeness and Timeliness of Weekly report by district, (Epi week 41, 2022)**



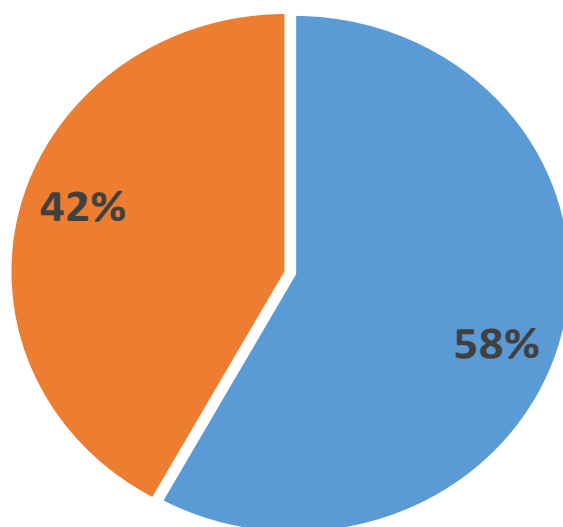
For week 41, all 16 districts achieved both the WHO and national target for timeliness and completeness.

## Cumulative Laboratory confirmed COVID-19 cases reported by district (30<sup>th</sup> March 2020 – 16<sup>th</sup> October, 2022) n = 7,730



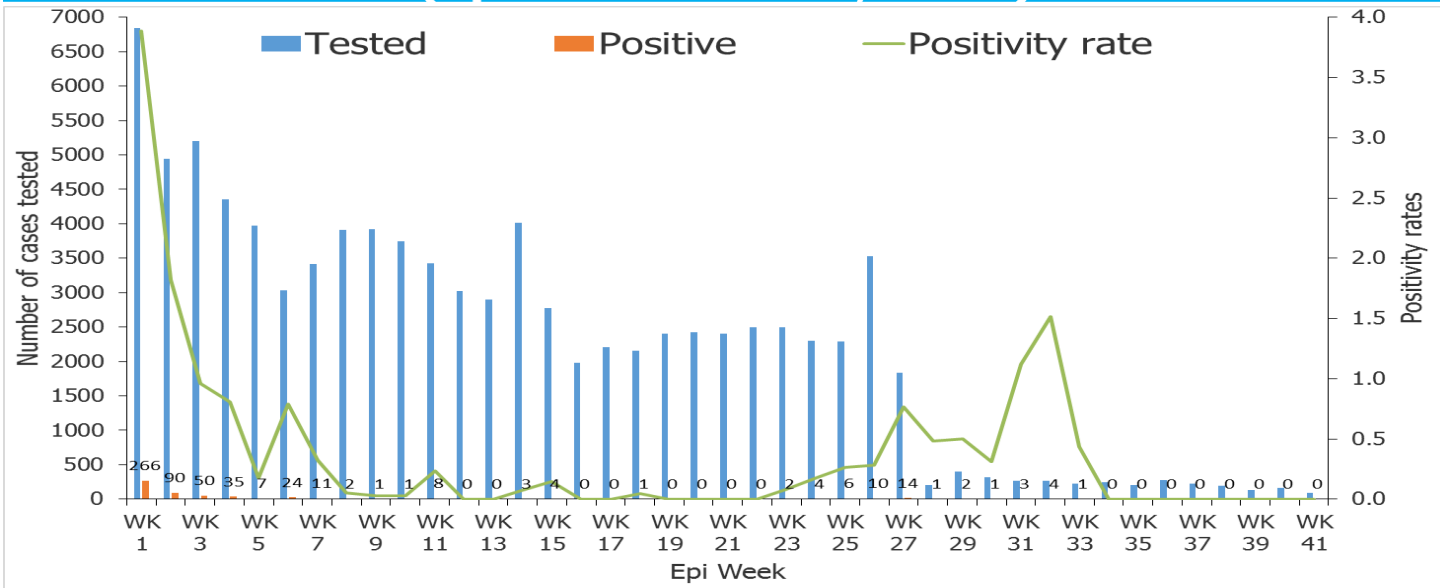
For the period of week 41, one confirmed COVID-19 case was reported this week. The total cumulative confirmed cases are 7,730. Western Area Urban and Rural still constitute the greater number of cases compared to the rest of the districts

## COVID-19 confirmed cases reported by sex in Sierra Leone (30<sup>th</sup> March 2020 – 16<sup>th</sup> October, 2022) n = 7,730



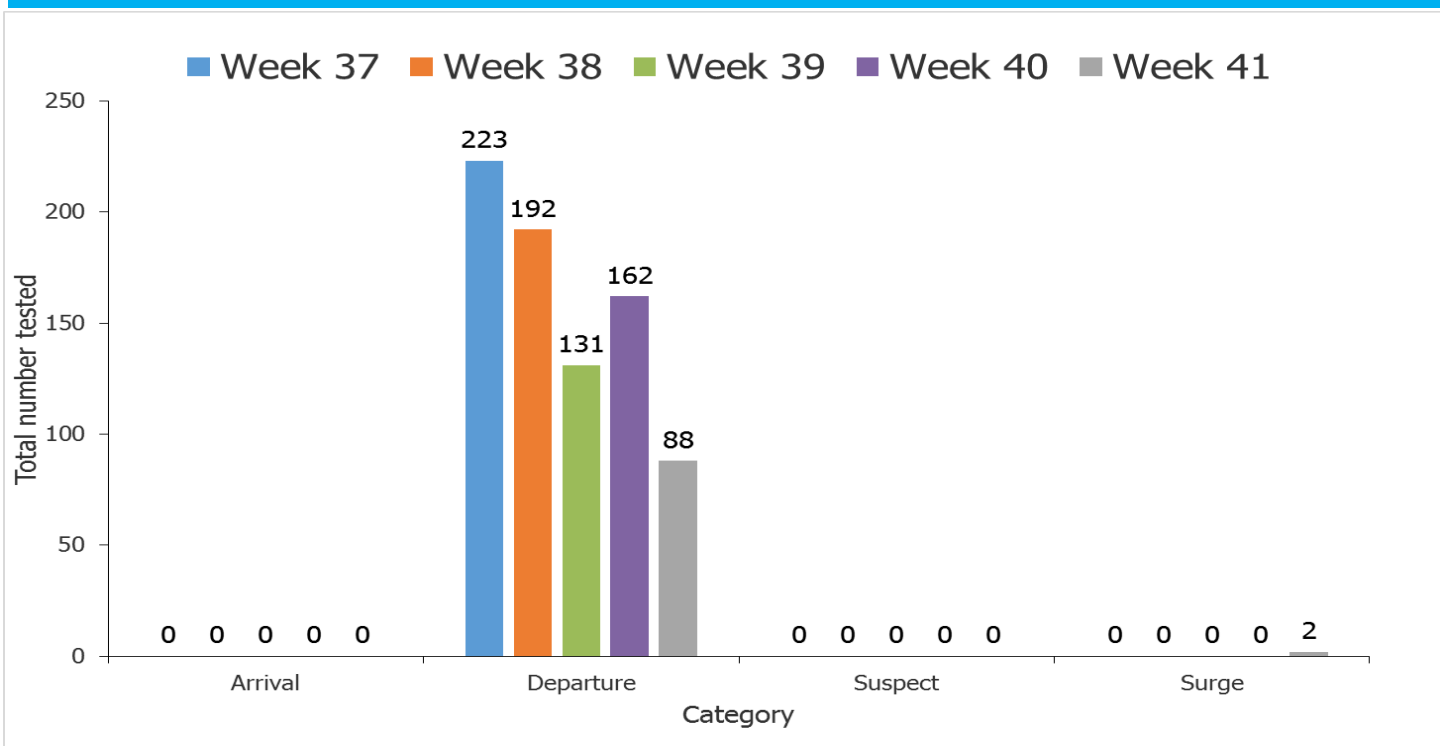
■ Male ■ Female

## Positivity rate of COVID-19 confirmed cases (Epi Week 1 - 41, 2022)



The positivity rate has been zero consecutively for the past seven week with one confirmed case of COVID-19 reported country-wide

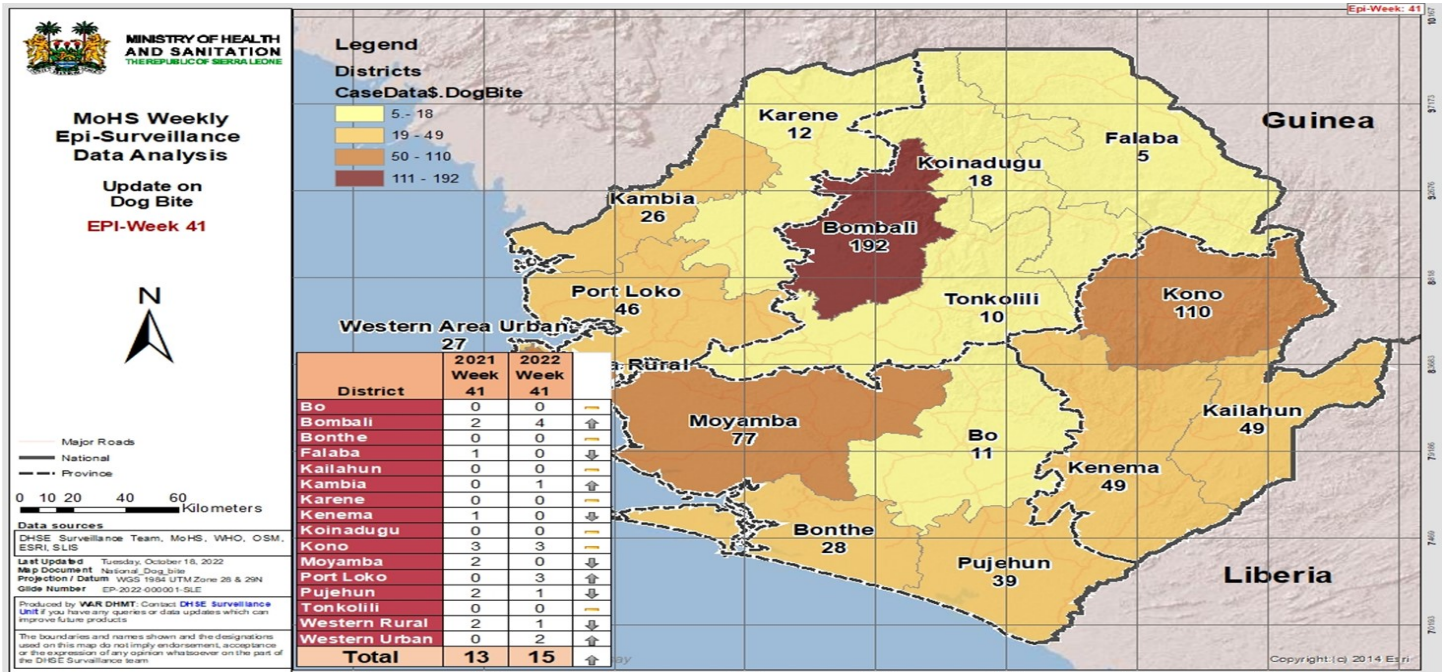
## Cumulative COVID-19 test conducted by Category (Epi Week 37 – 41, 2022) N=798



A greater proportion of testing is been done for departures, only two suspected cases were tested this week. The country has stopped testing arrivals. The response has been transitioned to the Ministry of Health and Sanitation.

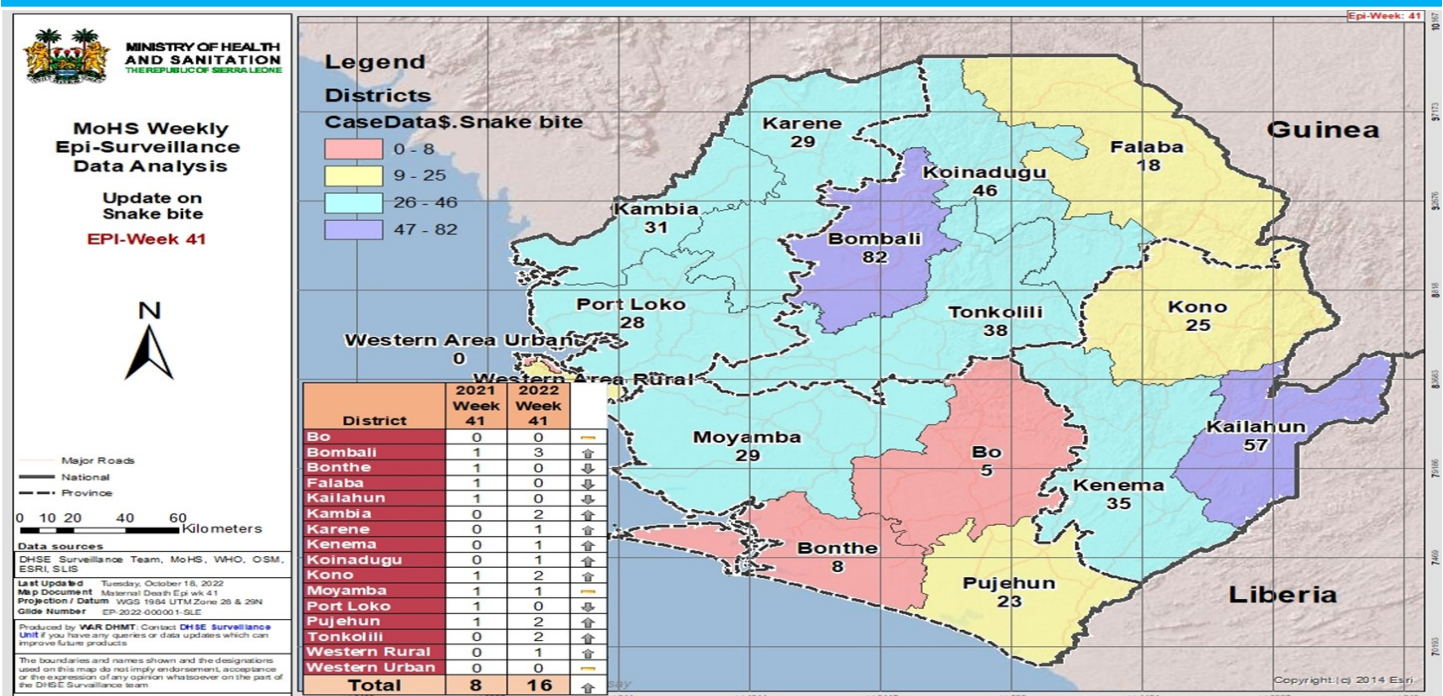


## Cumulative Animal Bite (Dog) cases reported by districts (Epi Week 1 - 41, 2022) n= 788



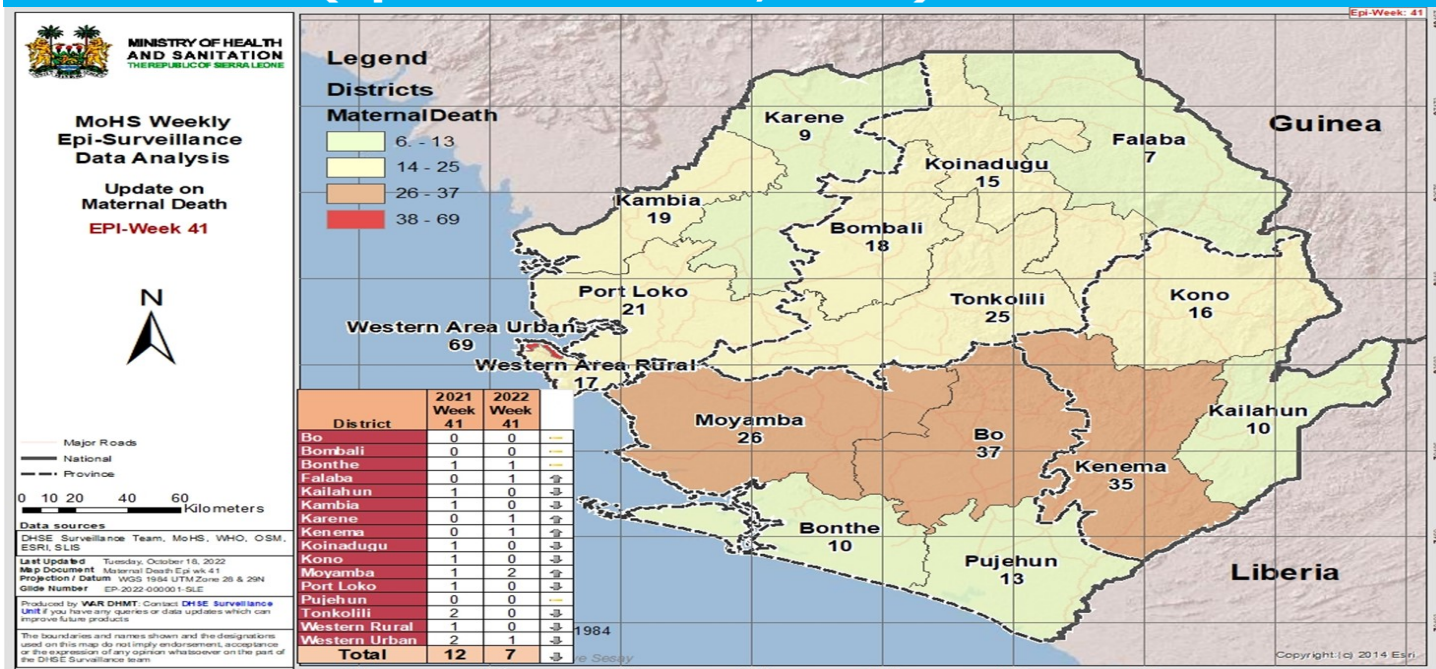
For week 41 of 2022, fifteen Dog bite cases were reported from seven districts. The cumulative number of cases countrywide is 788. The districts of Moyamba, Kono, and WAR have reported higher numbers of Dog bite cases. Port Loko and Pujehun district have reported one death each due to clinical Rabies

## Cumulative Animal bite (Snake) reported by districts (Epi Week 1 - 41, 2022) n=471



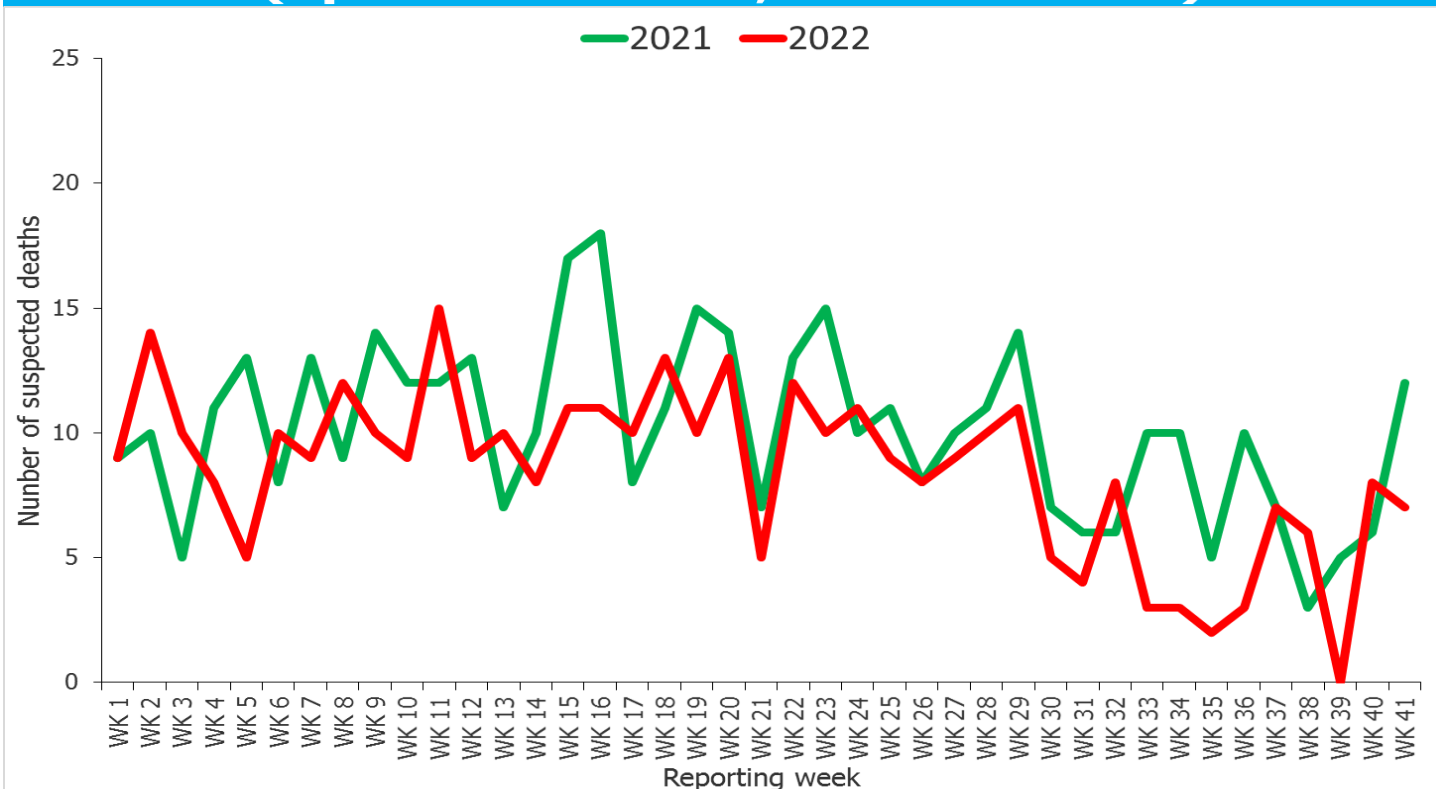
For week 41 of 2022, a total of sixteen (16) snake bites were reported from ten districts. The districts that have recorded higher numbers of snake bites are Koinadugu, Karene, Kenema, Tonkolili, Kailahun, Moyamba, WAU, WAR and Kambia district. The cumulative total since the start of the year is 445 countrywide. Twenty deaths due to snake bites have been reported from Bombali, Port Loko and Tonkolili (3) each per districts, Karene, Kenema and Pujehun (2) each and Bo, Bonthe, Kambia, Kono and Moyamba (1) each per districts

## Cumulative Maternal Death reported by districts (Epi Week 1 - 41, 2022) n=347



For week 41 of 2022, seven maternal deaths were reported from six districts. The cumulative deaths since the start of the year is 347 countrywide.

## Compared Maternal Deaths by year (Epi Week 1 - 41, 2021 & 2022)



In comparison with 2021, the period of week 40 of 2022 reported less number of deaths compared to that of 2021 same period.



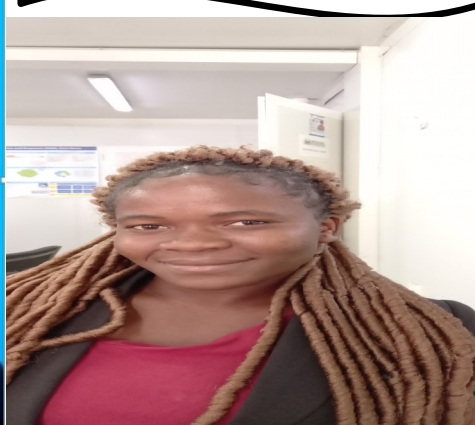
**NATIONAL WEEKLY BULLETIN PRODUCTION TEAM**



**Editor: Charles Keimbe**



**Publisher: Mr. Harold Thomas**



**Co-Editor: Haja F Bangura**



**Data Analyst: Mr. Samba Kamara**