

Corona Virus Disease (COVID-19) Situational Report

Report No.043 Date of Issue: 12th May, 2020, 11.am GMT

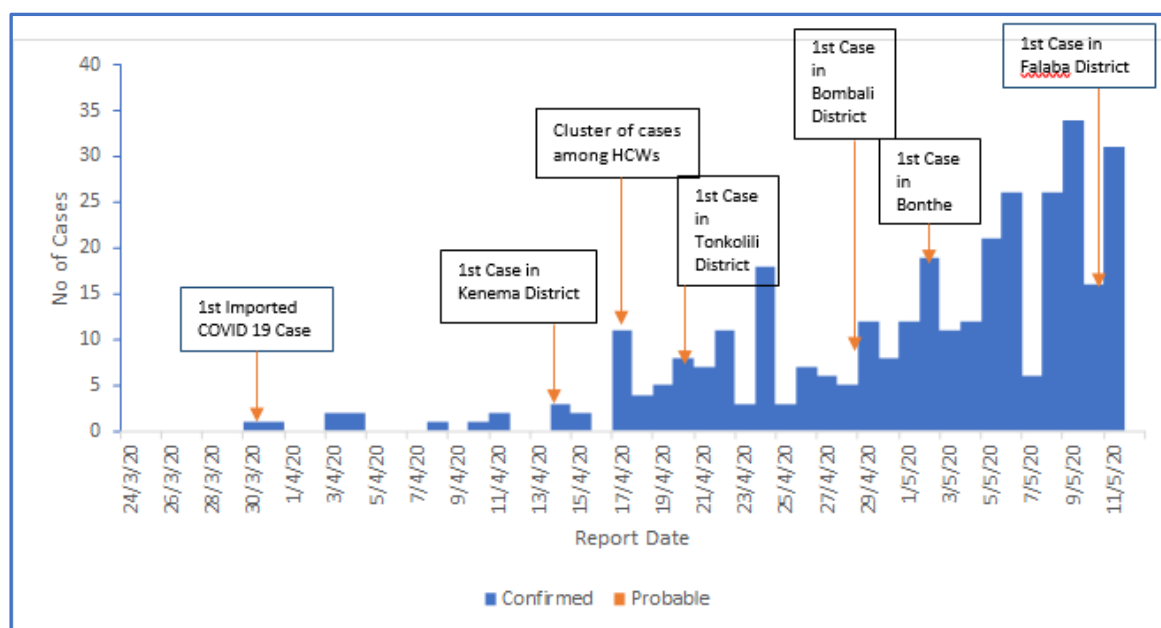
- As at 12th May 2020, there were **338** confirmed COVID-19 cases, **20 deaths** and **72 recoveries** in Sierra Leone
- No new** confirmed COVID-19 case was reported in the last 24 hours
- One** new COVID-19 related **death** occurred in the last 24 hours
- In the last 24 hours, **18** new COVID-19 tests were conducted in one laboratory. Positivity rate was **0%**.
- Forty-seven** (13.9%) COVID-19 cases are among health workers
- Case Fatality Rate (CFR) is **5.9%** *

CFR: only confirmed COVID-19 cases are included in calculation of CFR

New	Confirmed	0
	Recoveries	0
	Deaths	1
Cumulative	Confirmed	338
	Recoveries	72
	Deaths	20
*Case Fatality Rate (%)		5.9%

HIGHLIGHTS

Summary of COVID-19 Cases in Sierra Leone as at 12 th May, 2020							Recoveries
District	Confirmed Cases		Probable Cases		Deaths		
	New Confirmed Cases	Cumulative Confirmed Cases	New Probable cases	Cumulative Probable Cases	New Deaths	Cumulative Deaths	
Western Area Urban	0	244	0	0	1	17	46
Western Area Rural	0	37	0	0	0	0	12
Port Loko	0	8	0	0	0	0	10
Kenema	0	10	0	0	0	2	3
Tonkolili	0	4	0	0	0	0	1
Bombali	0	8	0	0	0	0	0
Bonthe	0	12	0	0	0	0	0
Bo	0	11	0	0	0	1	0
Koinadugu	0	2	0	0	0	0	0
Falaba	0	2	0	0	0	0	0
Total	0	338	0	0	1	20	72



- It is six weeks since the first COVID-19 case was confirmed in Sierra Leone
- There is an exponential rise in the number of confirmed COVID-19 cases.
- One hundred and thirty-nine cases have been reported in the last 7 days
- No new case was reported in the last 24 hours. A possible explanation for this is the lower number of tests conducted over the last 24 hours.

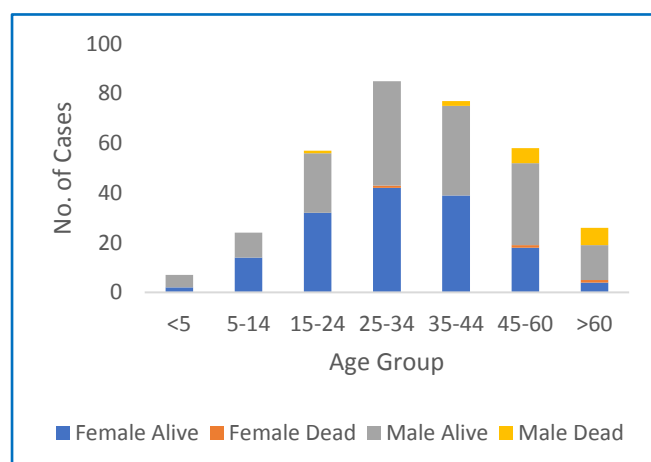


Figure 2: Age-Sex Distribution and Outcome of COVID-19 Cases

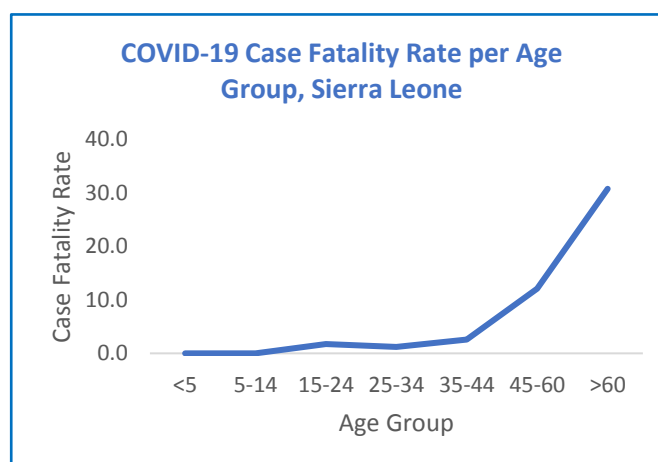
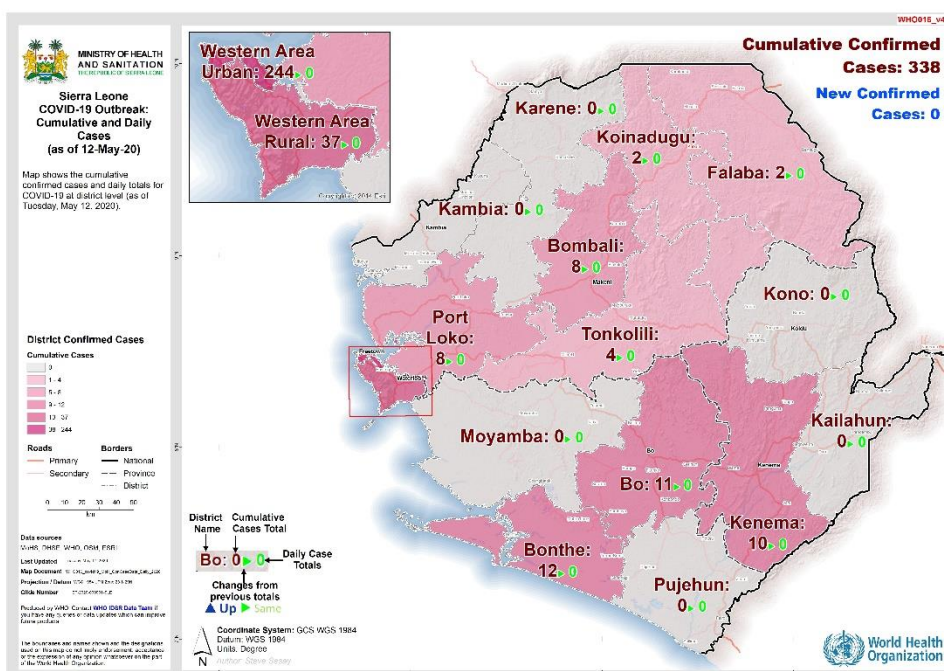


Figure 3: Age-Specific Case Fatality Rates

- **Median Age** of cases is **33 years** (Range 2 months -76 years)
- One hundred and seventy-eight (**52.8%**) are **male**
- Two hundred and fifty (**74%**) cases are **<45 years**
- Sixteen (**80%**) out of 20 COVID-related deaths are among males
- Case fatality rate increases with age and peaks among cases aged **> 60 years (CFR= 30.8%)**



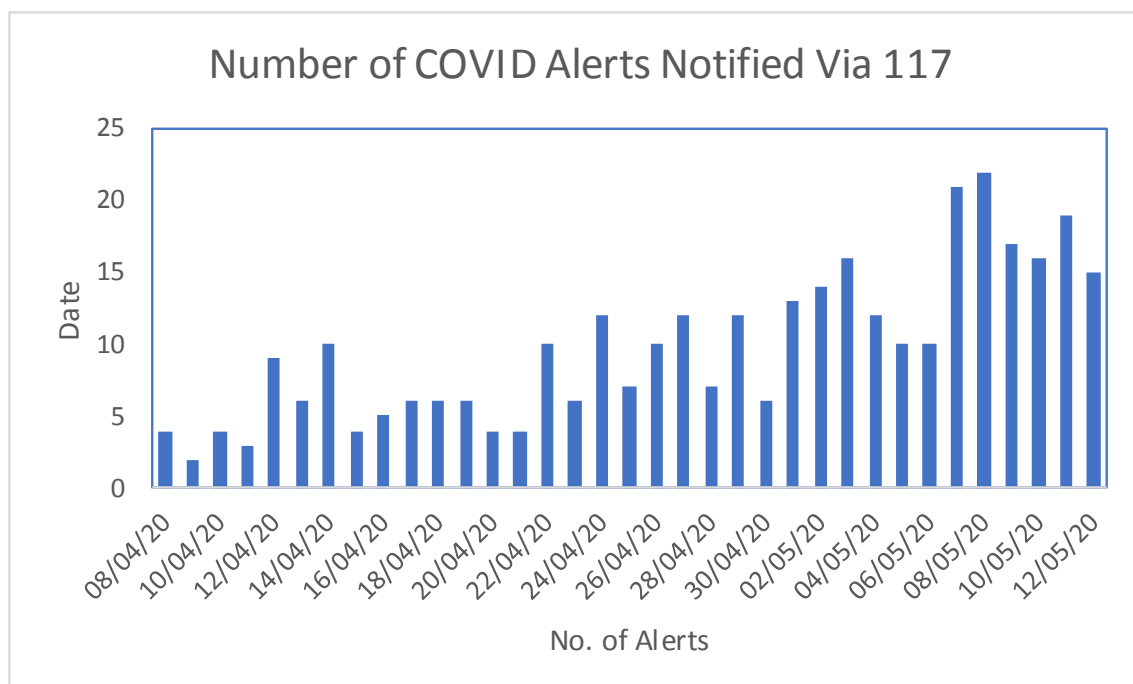


Figure 6: COVID-19 Related Alerts Received through the 117 Hotline

Technical Areas	Variable	No
Contact Tracing	Current no of high risk contacts on follow up	1759
	No. of contacts monitored in the last 24 hours	1759 (100%)
Quarantine	Total No. Currently under quarantine	2030
	Self-Quarantine	1328 (65.4%)
	Institutional Quarantine	702 (34.6%)
Laboratory Testing	Laboratory tests done in last 24 hours	18
	Cumulative number of tests	3052
	No of positive tests (% positivity rate)	338 (11.1%)
Event Based Surveillance (last 24 hrs)	Total Alerts Received through 117 System	159
	No. of COVID related alerts	15
	No. of COVID related alerts investigated	15
Critical Care Patients	No of patients on a ventilator	0

*This Situation Report was
developed by:*

**Ministry of Health and Sanitation, Sierra
Leone**

*For any comments or inquiries
contact:*

eocnsr2020@gmail.com